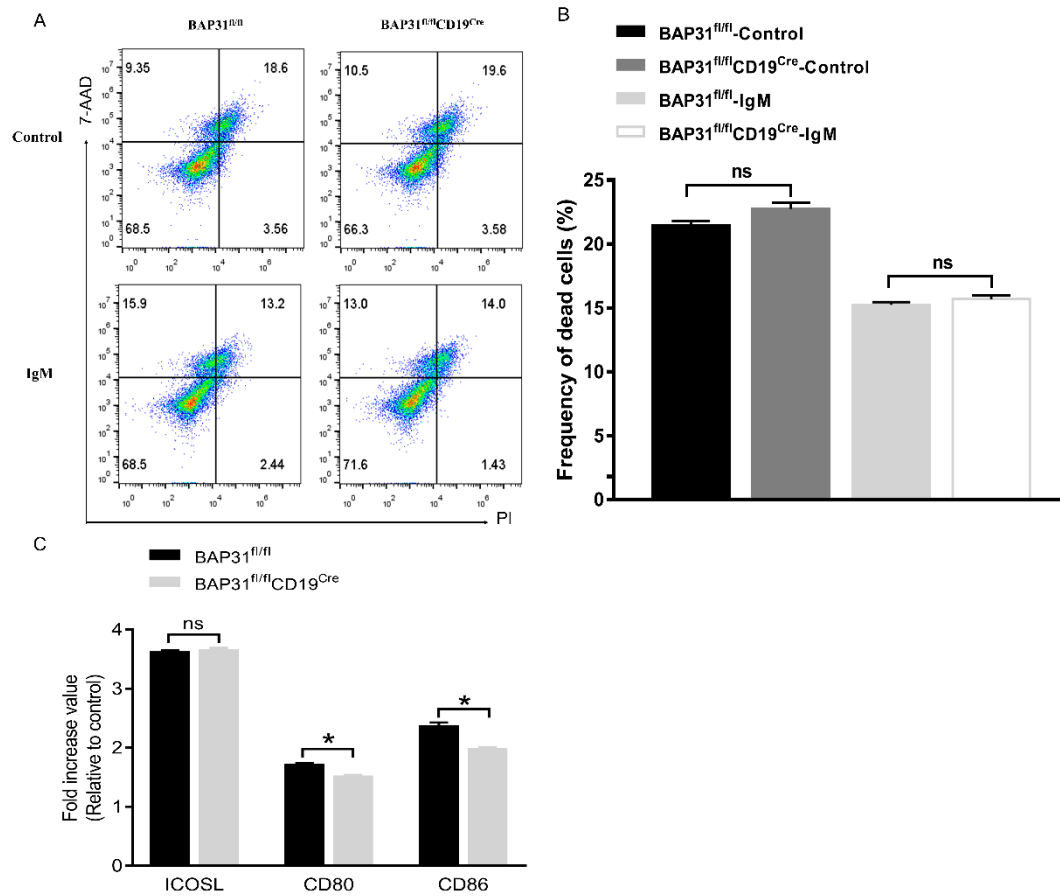


Supplemental Figure S1. (A) Construction strategy of *BAP31* conditional knockout mice. Diagram indicating the locations of *BAP31* exons, loxP sites and deletion of exon 3 by Cre recombinase. (B) RT-PCR analysis Cre-recombination and mouse genotypes (n=7). Of the seven littermates detected, Lanes 5 and 7 with two bands of 273 bp and 200 bp were identified as *BAP31^{fl/fl}CD19^{Cre}*, Lanes 1 and 3 with one band of 273 bp were identified as *BAP31^{fl/fl}* mice. (C) Representative flow cytometry profiles of lymph node (LN) and peripheral blood (PBL) from *BAP31^{fl/fl}* mice and *BAP31^{fl/fl}CD19^{Cre}* mice to identify B cell populations (n=3). Numbers in the plots indicate percentages in each gate.



Supplemental Figure S2. (A) Flow cytometry detect the apoptosis of B cells stimulated with IgM using annexin V-FITC/PI staining (n=3). (B) Statistic histogram images of died cells. ns, no significant difference.(C))Fold increase value of ICOSL , CD80, and CD86 compared to corresponding controls (n=3).