

SUPPLEMENTARY DATA

Table S1. Statistical Analysis Details.

| Fig. # | Statistical test | Factors, Degree of freedom & F/t value | Significance |
|--------|---------------------------------|--|--------------|
| 1B | Unpaired t test (Two-tailed) | t=5.082, df=22 | **** |
| 2B | Unpaired t test (Two-tailed) | t=11.84, df=22 | **** |
| 3C | Unpaired t test (Two-tailed) | t=10.69, df=22 | **** |
| 4D | Unpaired t test (Two-tailed) | t=14.48, df=22 | **** |
| 1C | Unpaired t test (Two-tailed) | t=10.57, df=22 | **** |
| 2C | Unpaired t test (Two-tailed) | t=7.616, df=22 | **** |
| 3C | Unpaired t test (Two-tailed) | t=13.46, df=22 | **** |
| 4D | Unpaired t test (Two-tailed) | t=11.90, df=22 | **** |

****p<0.0001 vs. sedentary, as determined by unpaired two-tailed Student t-test.

Figure S1. IHC original microphotographs.

Scale Bar: 50 μ m and 10 μ m.

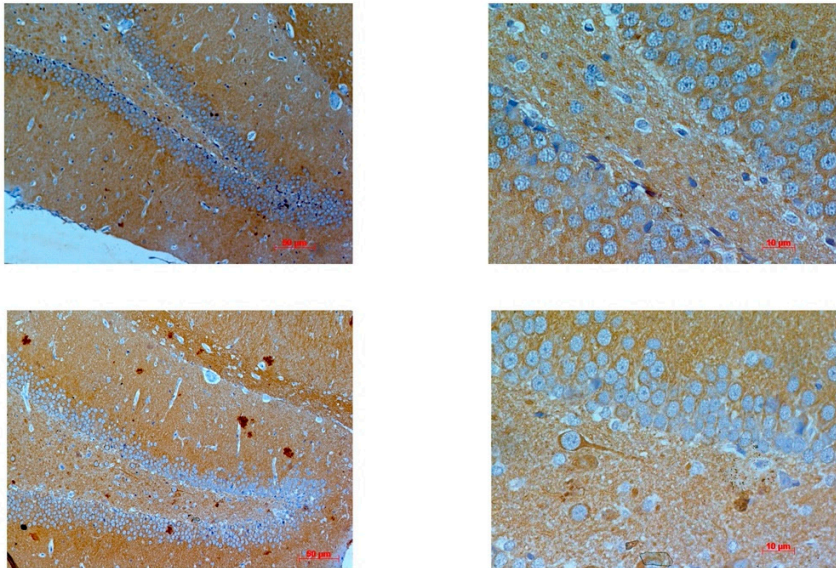


Figure 1

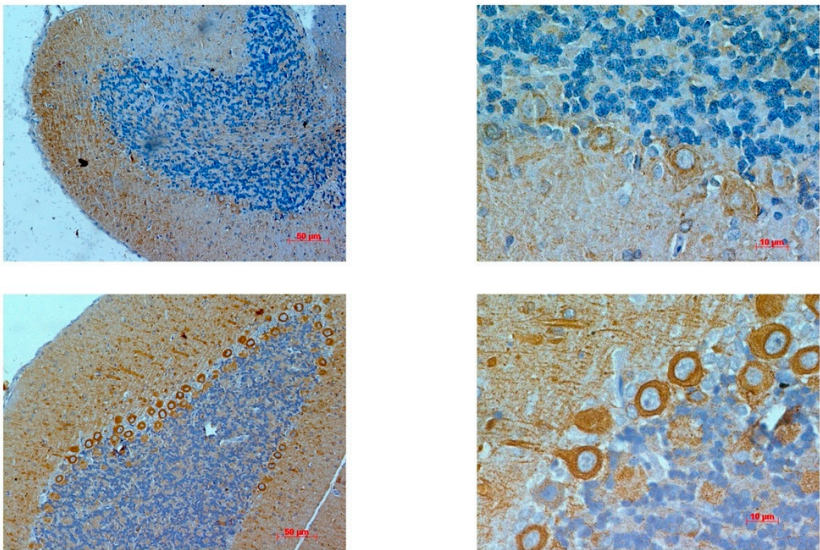


Figure 2

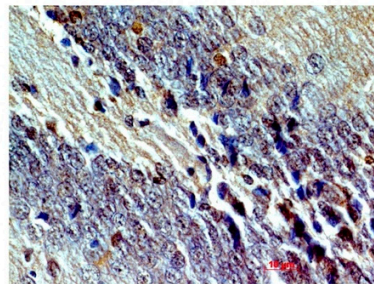
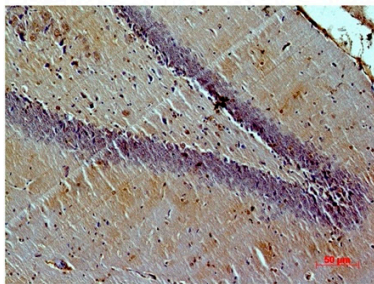
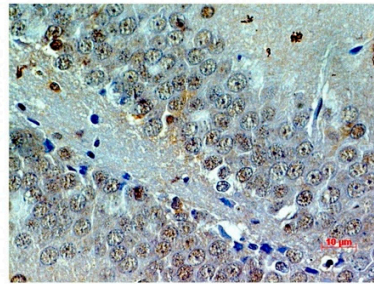
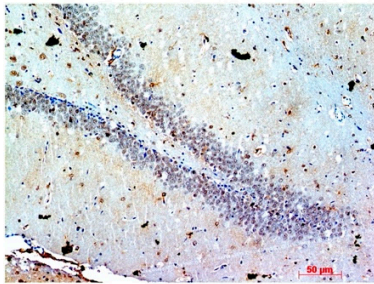


Figure 3

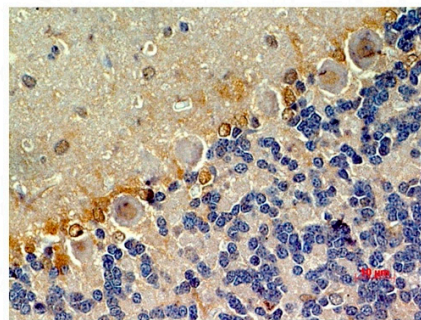
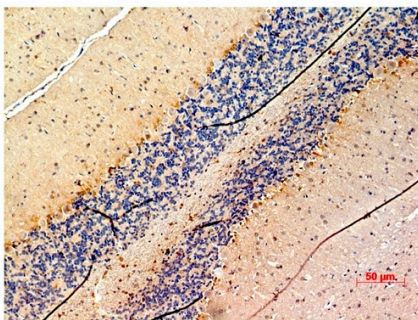
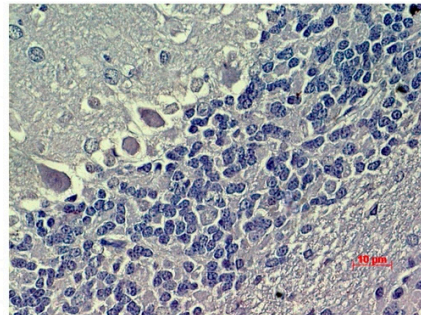
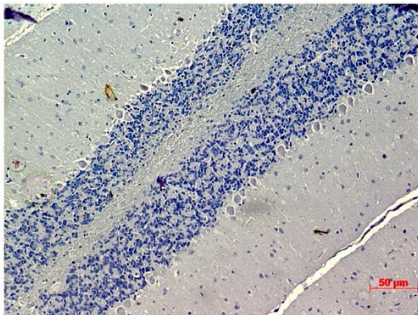


Figure 4

Figure S2. Original western blot.

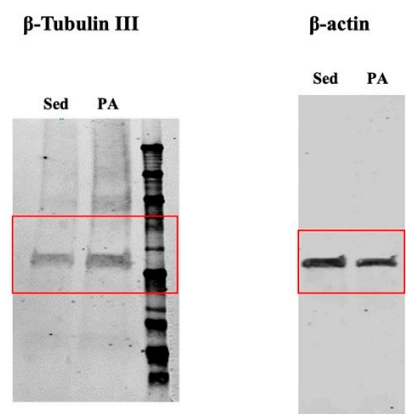


Figure 1

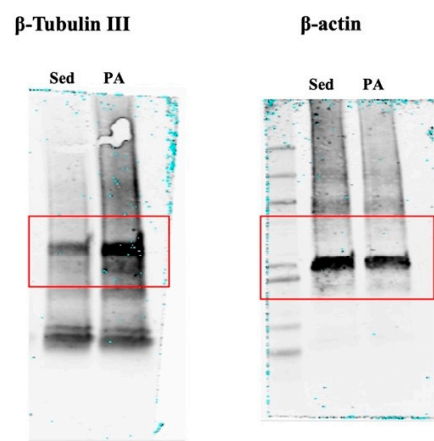


Figure 2

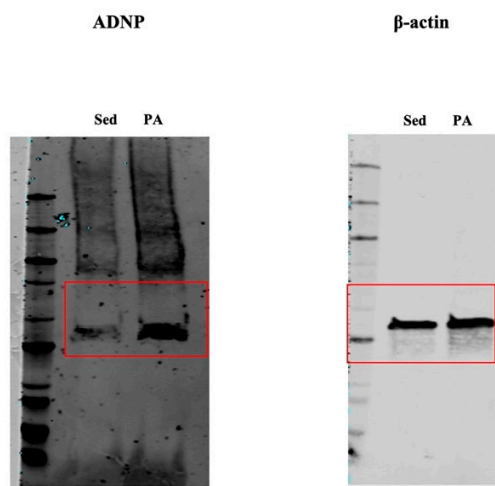


Figure 3

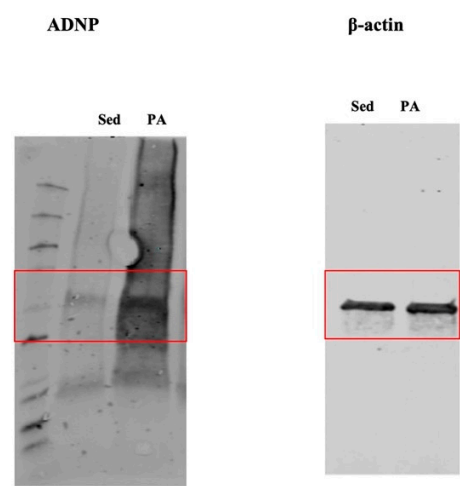


Figure 4

Figure S3. IF original microphotographs.

DG sedentary (scale bar: 20 μm and 5 μm)

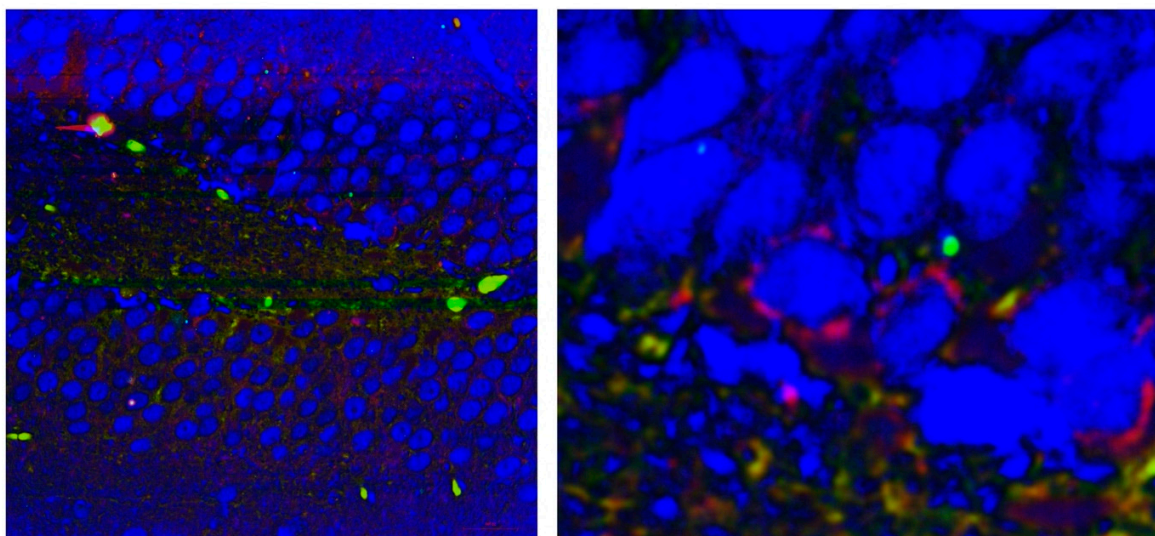


Figure 5 – DG sedentary

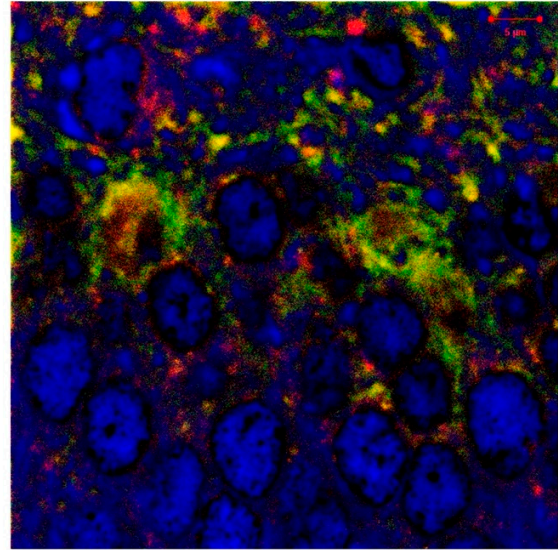
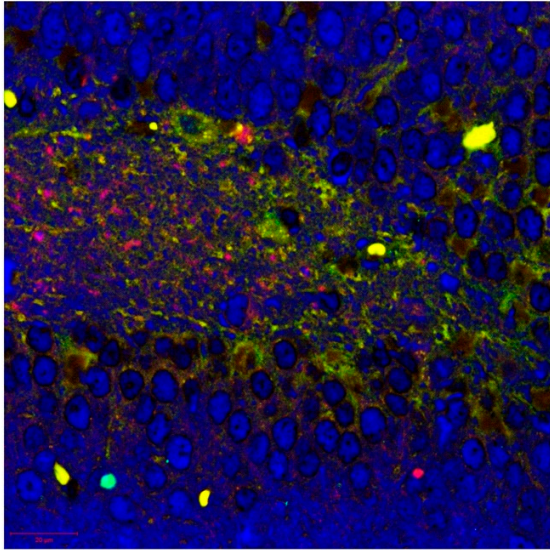


Figure 5 – DG PA

DG PA (scale bar: 20 μm and 5 μm)

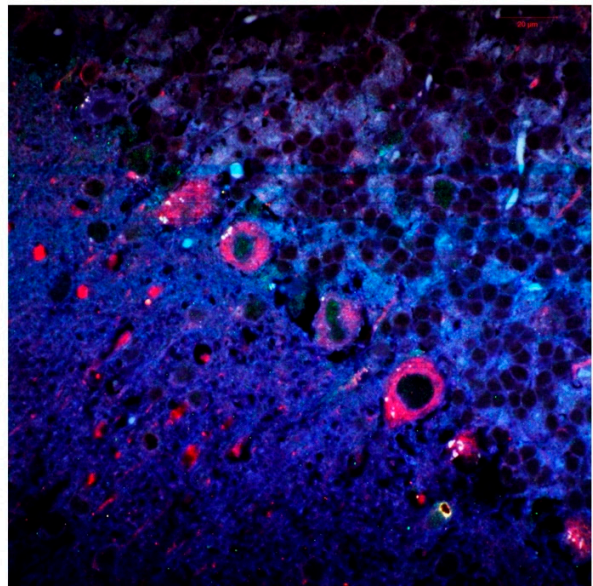
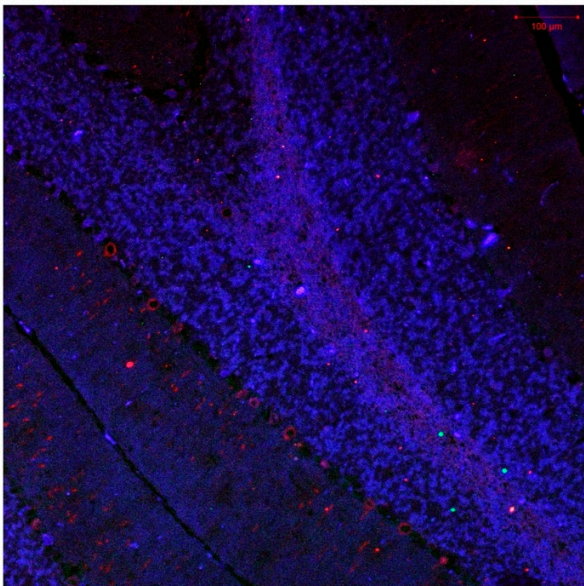


Figure 6 – cerebellum sedentary

cerebellum sedentary (scale bar: 100 μm and 20 μm)

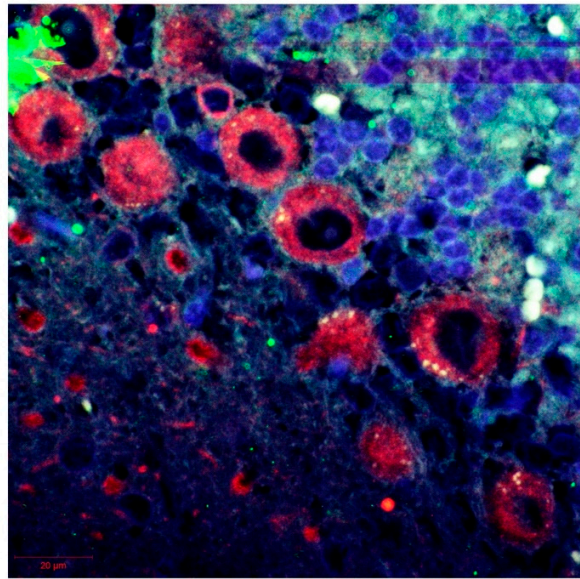
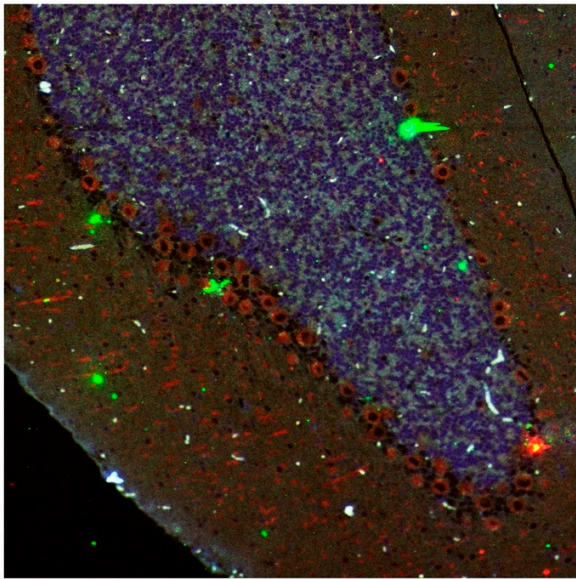


Figure 6 – cerebellum PA

Cerebellum PA (scale bar: 100 μm and 20 μm).