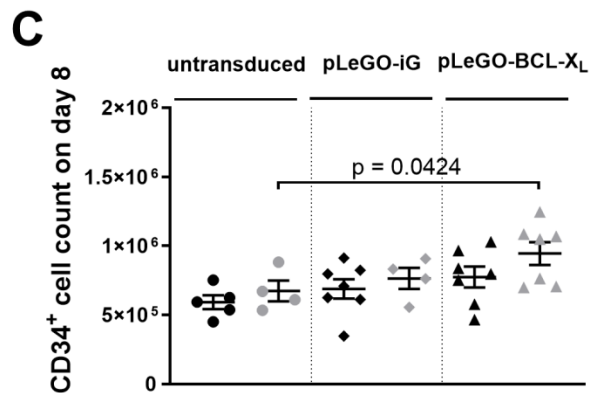
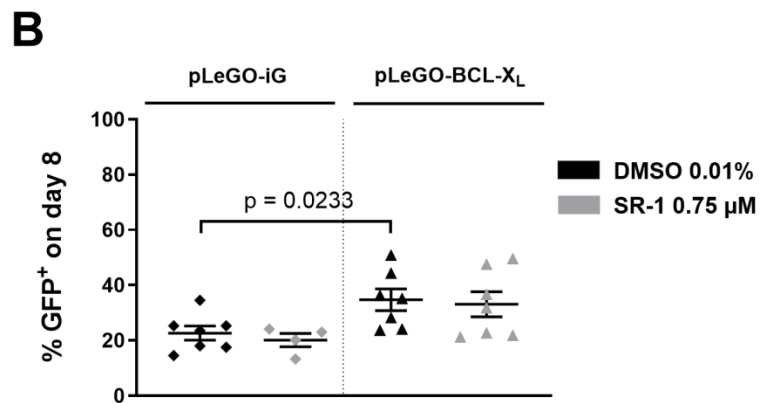
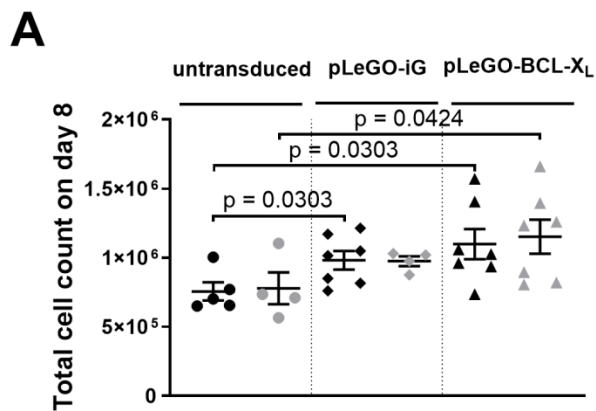


Supplementary Figure 1: Lentiviral transduction with pLeGO-iG and pLeGO-BCL-X_L.

A: Vector map of pLeGO-iG. B: 1×10^6 HeLa cells were lentivirally transduced with pLeGO-iG (control) or pLeGO-BCL-X_L (MOI = 10 - 20), or remained untransduced. After three days the cells were pelleted, proteins were isolated, and the BCL-X_L protein content was analyzed by western blot. The Burkitt lymphoma cell line BL40 served as a positive control, β -actin as a loading control.



Supplementary Figure 2: Characteristics of lentivirally transduced and expanded CD34⁺ cells prior to transplantation.

For experimental design see Figure 3A. The progeny of 1×10^5 CD34⁺ cells was counted and analyzed by flow cytometry on day 8 of culture prior to transplantation. A: Total cell count on day 8. B: % GFP⁺ of live cells on day 8. C: CD34⁺ cell count on day 8. Bars represent means of $n = 4 - 7$ from 8 independent experiments \pm SEM. Significant p values are indicated (Mann-Whitney Test).