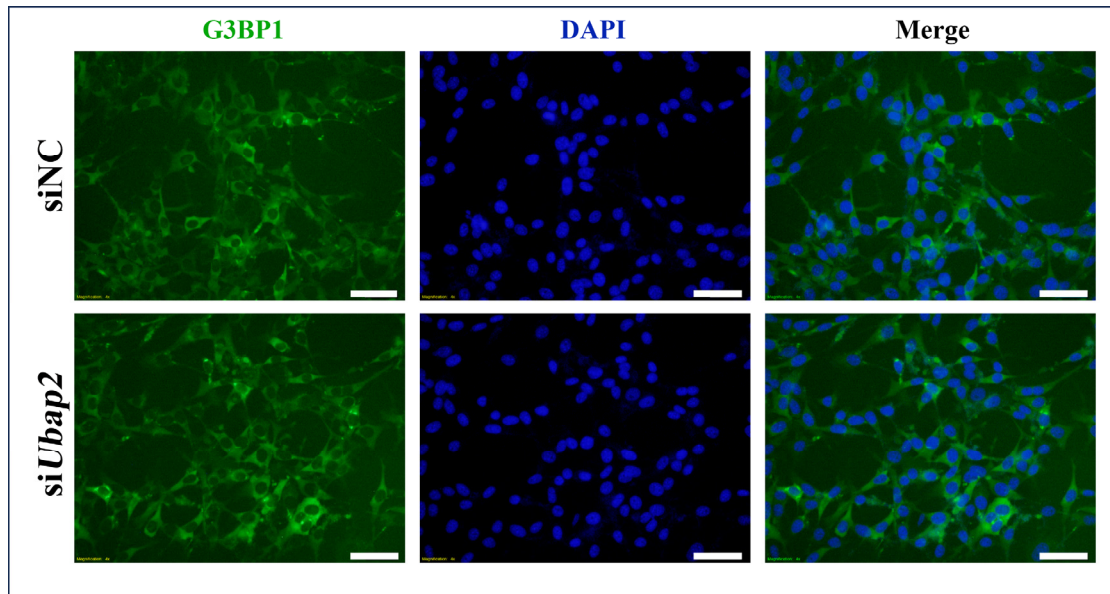
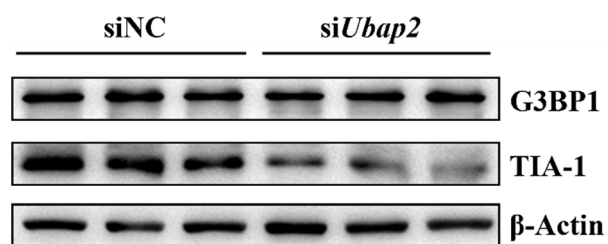


**Supplementary Figure S1. Quantitative analysis of *siG3bp1/2* on SG assembly in TM4 cells during HS.** Cells were transfected with siNC or *siG3bp1/2* for 48 h followed by HS at 43°C for 30 min.



**Supplementary Figure S2. Effect of siUbp2 on SG disassembly in TM4 cells after HS.** Cells were transfected with siNC or siUbp2 for 48 h followed by HS at 43°C for 30 min and recovery at 37°C for 90 min. Scale bars, 25  $\mu$ m.



**Supplementary Figure S3. Immunoblots of G3BP1 and TIA-1 in non-HS condition.**  
Cells were transfected with siNC or siUbap2 for 48 h at 37°C followed by proteins extraction.