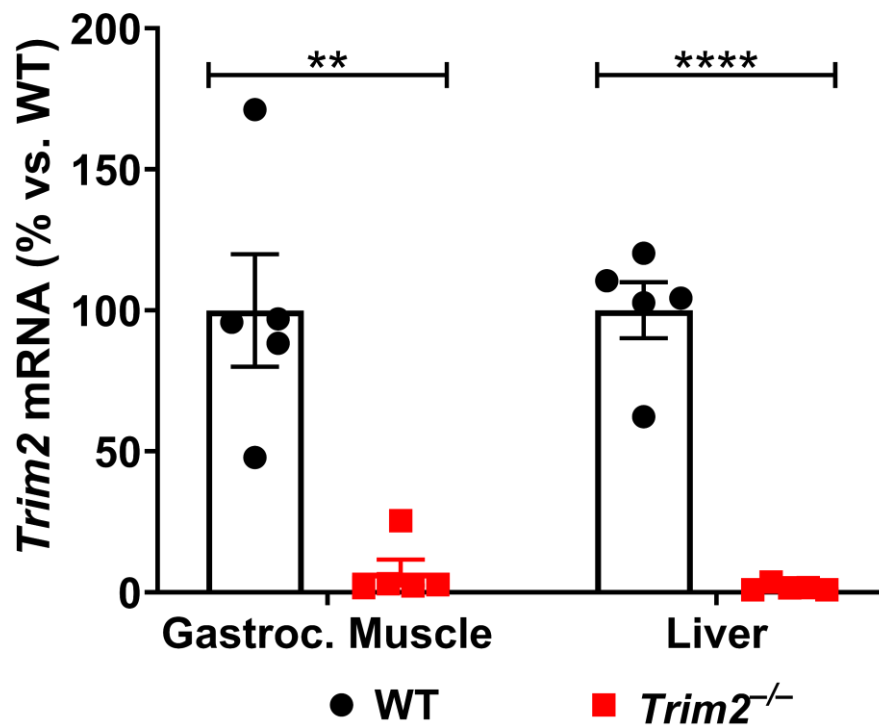
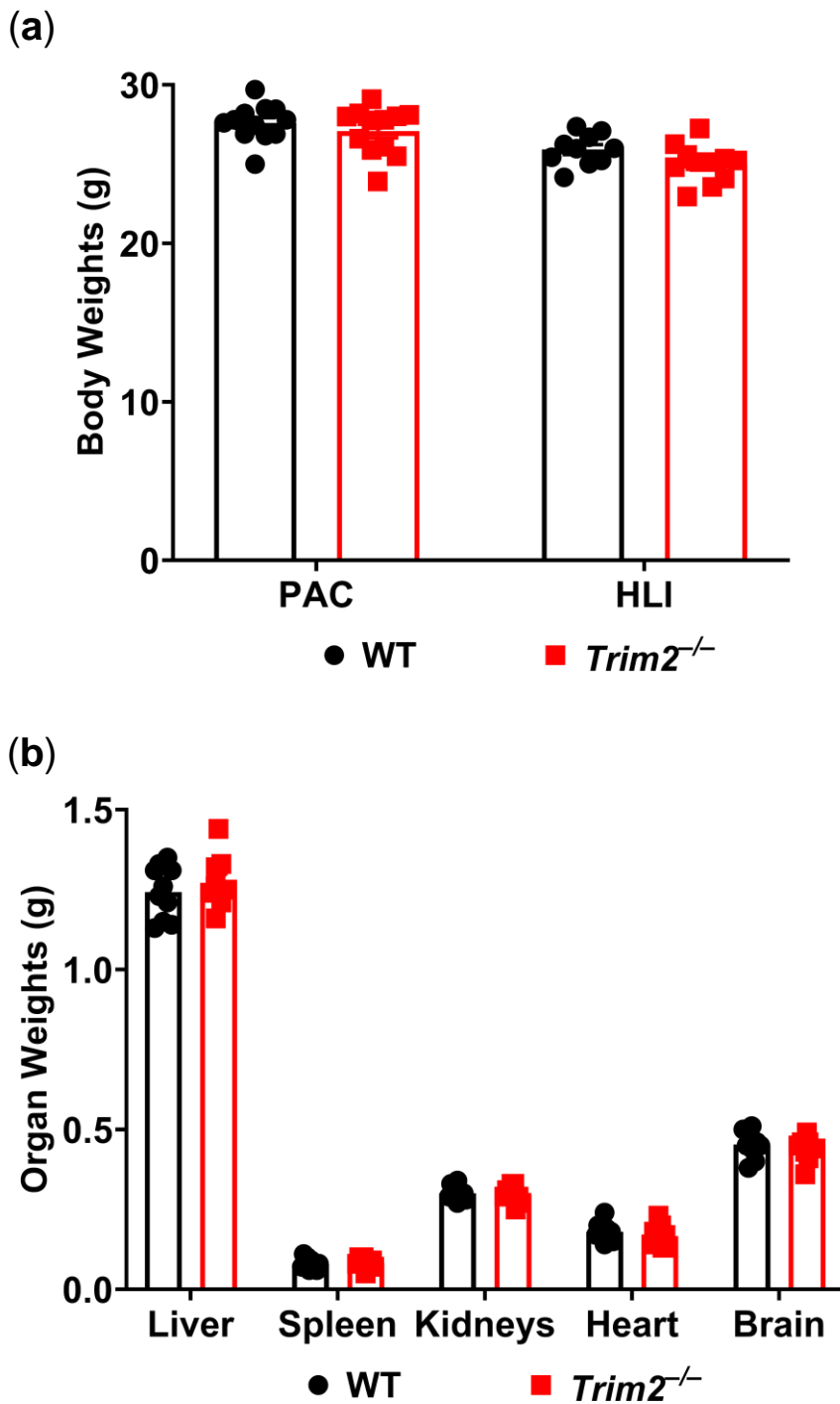


SUPPLEMENTAL FIGURE S1



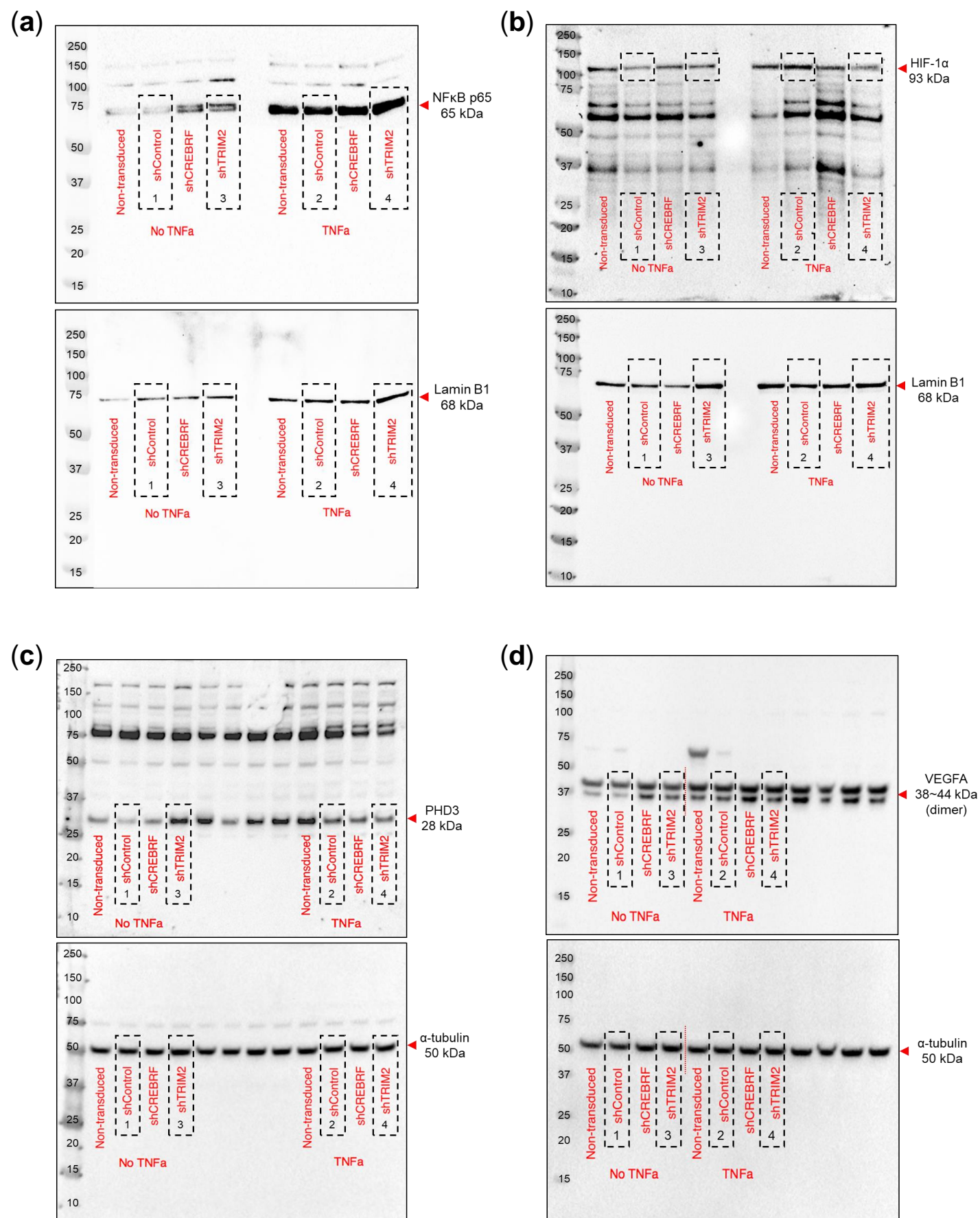
Supplemental Figure S1: Mouse *Trim2* mRNA levels were determined using qPCR from gastrocnemius muscle and liver tissues from wildtype (WT) and *Trim2*^{-/-} mice ($N = 5/\text{group}$). Results are mean \pm SEM and normalized to WT mice. ** $p < 0.01$, **** $p < 0.0001$ by unpaired student's t -test.

SUPPLEMENTAL FIGURE S2



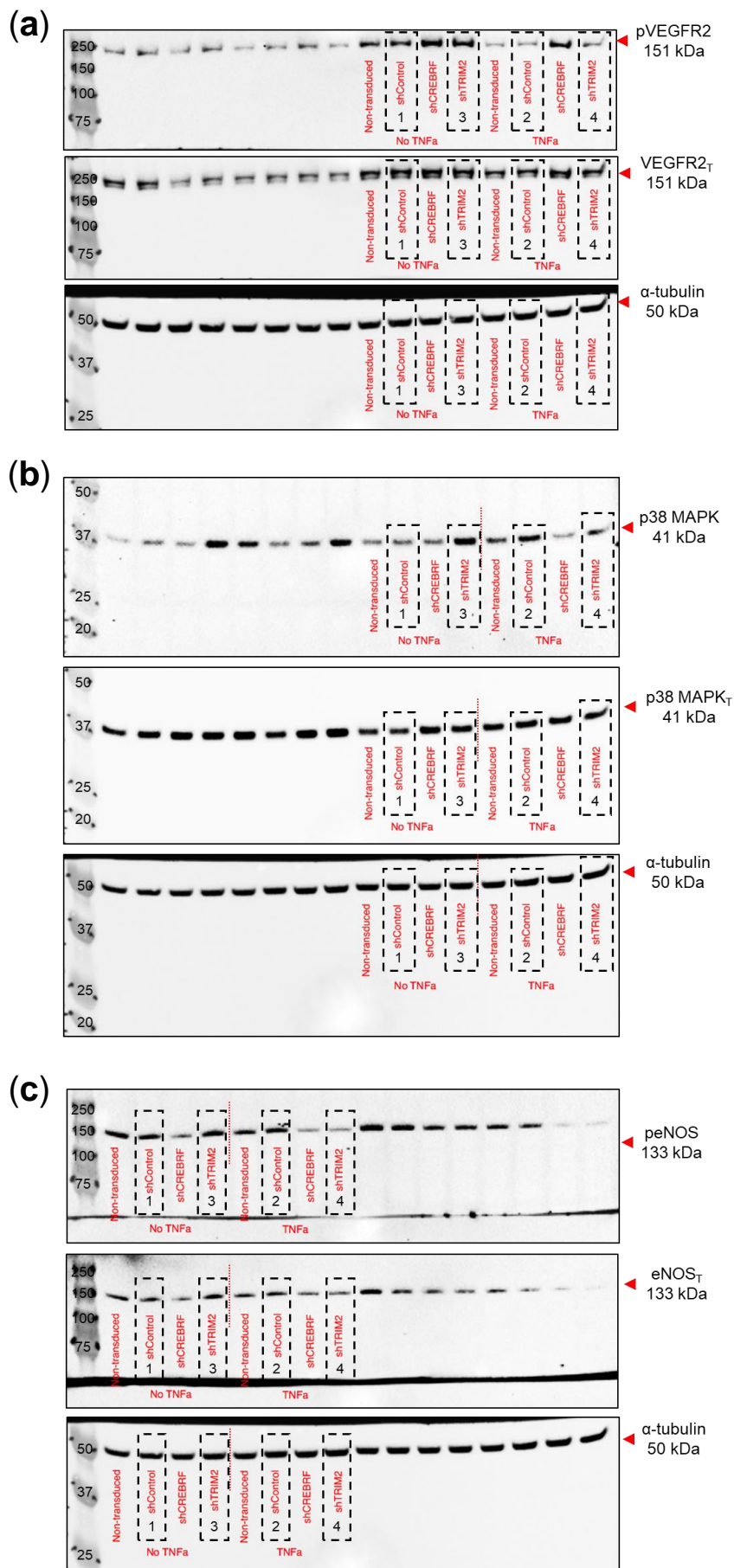
Supplemental Figure S2: (a) Total body weight of wildtype (WT) and *Trim2*^{-/-} mice at the conclusion of either the periarterial cuff (PAC, *N*=12/group) or hindlimb ischemia (HLI, *N*=10–11/group) studies. (b) Weights of individual organs (*N*=10/group). Results are mean ± SEM and normalized to WT mice.

SUPPLEMENTAL FIGURE S3



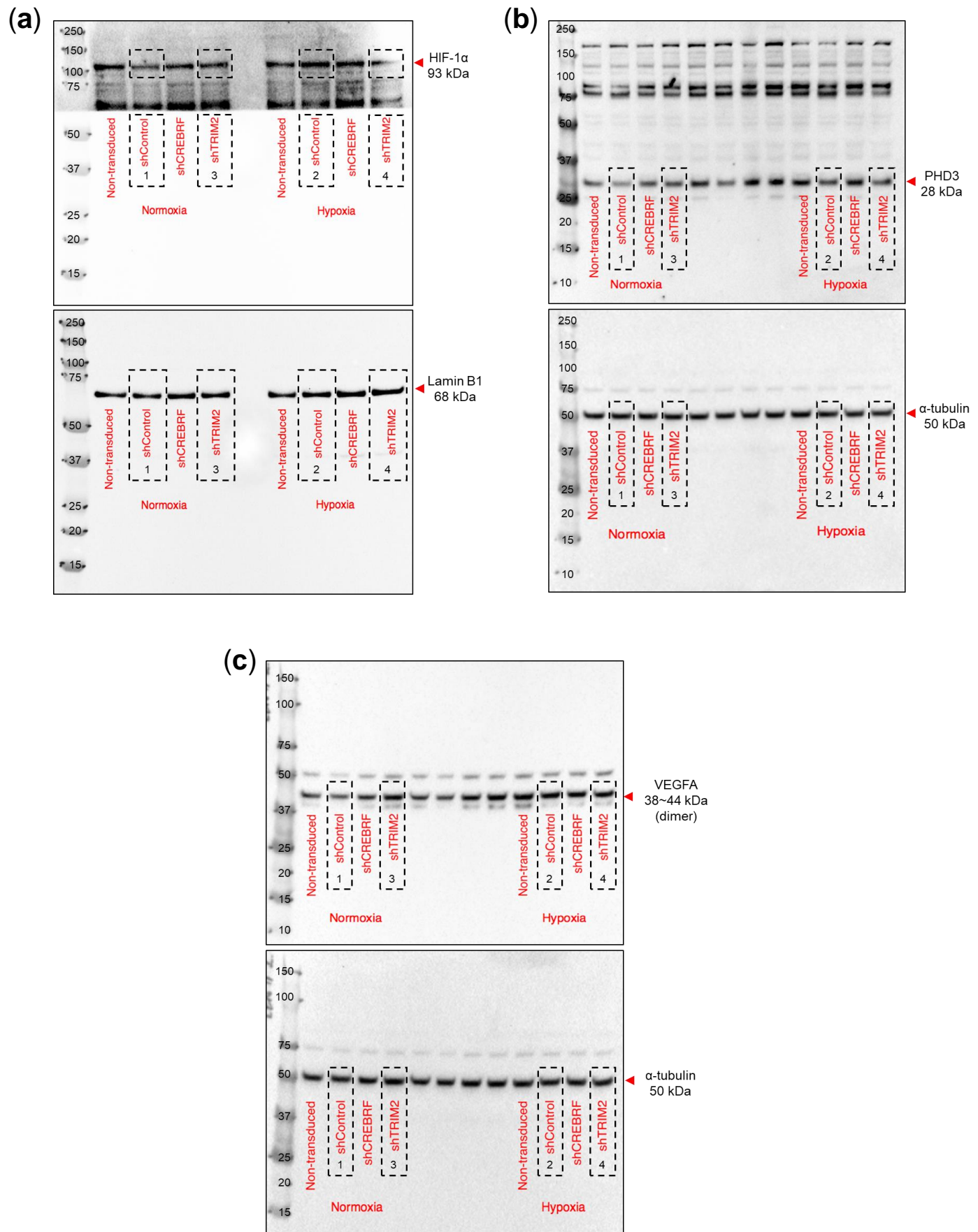
Supplemental Figure S3: Full blots of **(a)** NFκB p65 and Lamin B1 for Figure 3h; **(b)** HIF-1α and Lamin B1 for Figure 3i; **(c)** PHD3 and α-tubulin for Figure 3j; and **(d)** VEGFA and α-tubulin for Figure 3k. Dotted lines show the cropping location and the order in which the bands are presented.

SUPPLEMENTAL FIGURE S4



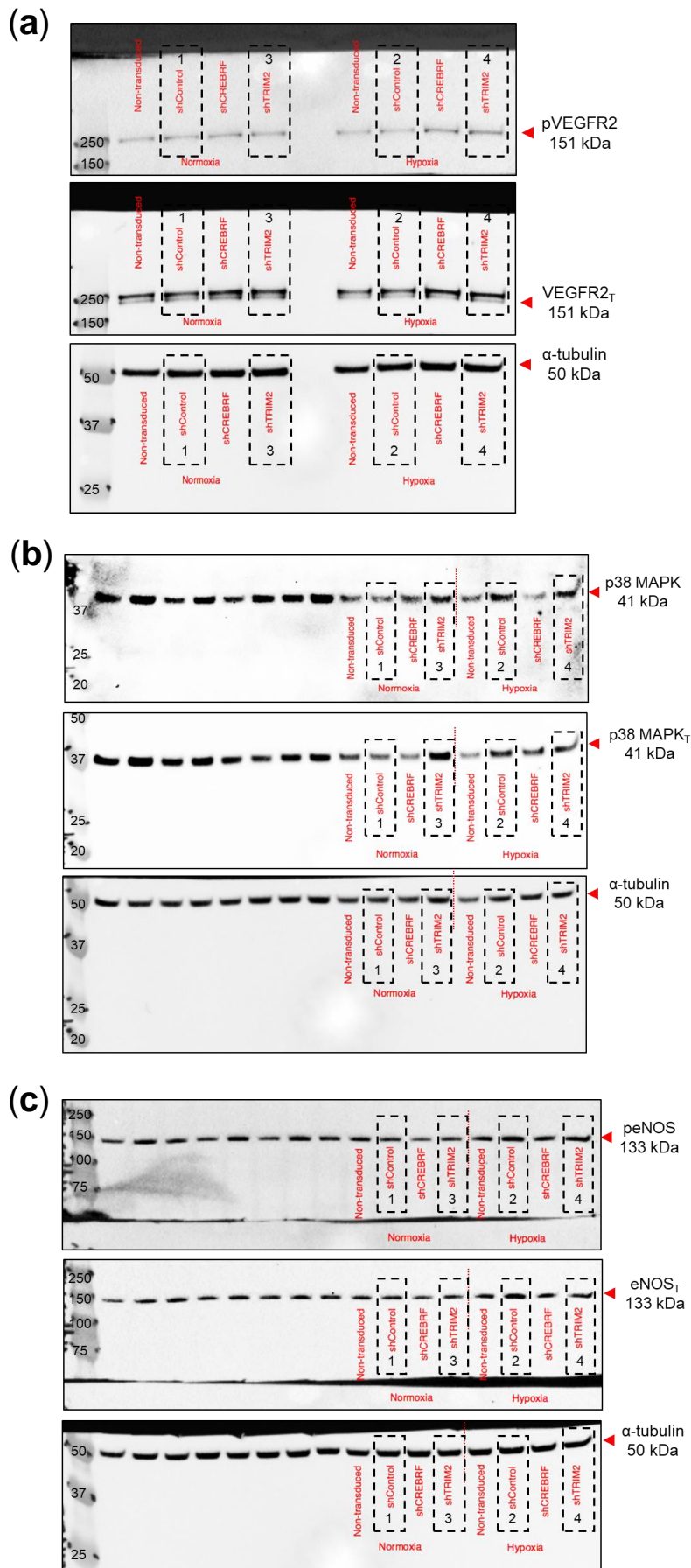
Supplemental Figure S4: Full blots of **(a)** phosphorylated (Tyr¹¹⁷⁵) VEGFR2, total VEGFR2 and α-tubulin for Figure 3l; **(b)** phosphorylated (Thr¹⁸⁰/Tyr¹⁸²) p38 MAPK, total p38 MAPK and α-tubulin for Figure 3m; and **(c)** phosphorylated (Ser¹¹⁷⁷) eNOS, total eNOS and α-tubulin for Figure 3n. Dotted lines show the cropping location and the order in which the bands are presented.

SUPPLEMENTAL FIGURE S5



Supplemental Figure S5: Full blots of **(a)** HIF-1α and Lamin B1 for Figure 5g; **(b)** PHD3 and α-tubulin for Figure 5h; and **(c)** VEGFA and α-tubulin for Figure 5i. Dotted lines show the cropping location and the order in which the bands are presented.

SUPPLEMENTAL FIGURE S6



Supplemental Figure S6: Full blots of (a) phosphorylated (Tyr¹¹⁷⁵) VEGFR2, total VEGFR2 and α -tubulin for Figure 5j; (b) phosphorylated (Thr¹⁸⁰/Tyr¹⁸²) p38 MAPK, total p38 MAPK and α -tubulin for Figure 5k; and (c) phosphorylated (Ser¹¹⁷⁷) eNOS, total eNOS and α -tubulin for Figure 5l. Dotted lines show the cropping location and the order in which the bands are presented.