

Figure S1. Effective and tolerated doses of DOX in 4T1-bearing mice after three treatments. Tumor volume by Ultrasound (US) (A). Tumor weight (B). Body weight change (C). Mean \pm SEM, (A, C) two-way ANOVA, (B) one-way ANOVA *: $p < 0.05$, ***: $p < 0.001$.

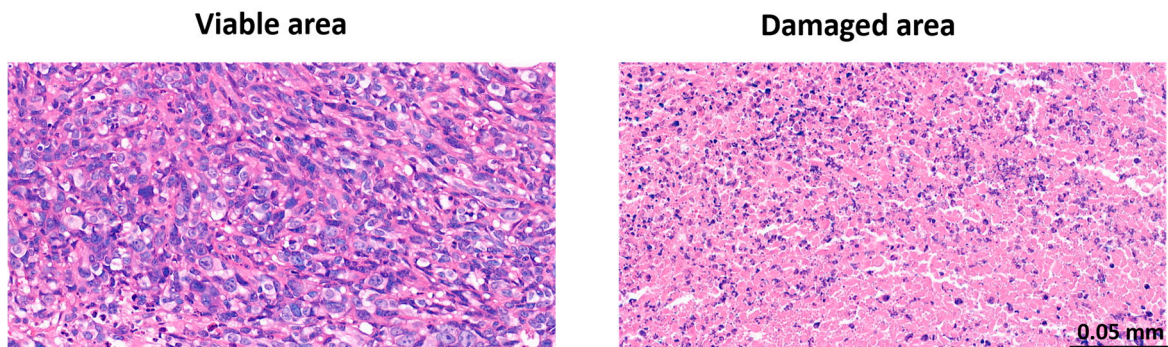


Figure S2. The difference between the viable and damaged areas on hematoxylin-eosin-stained sections.