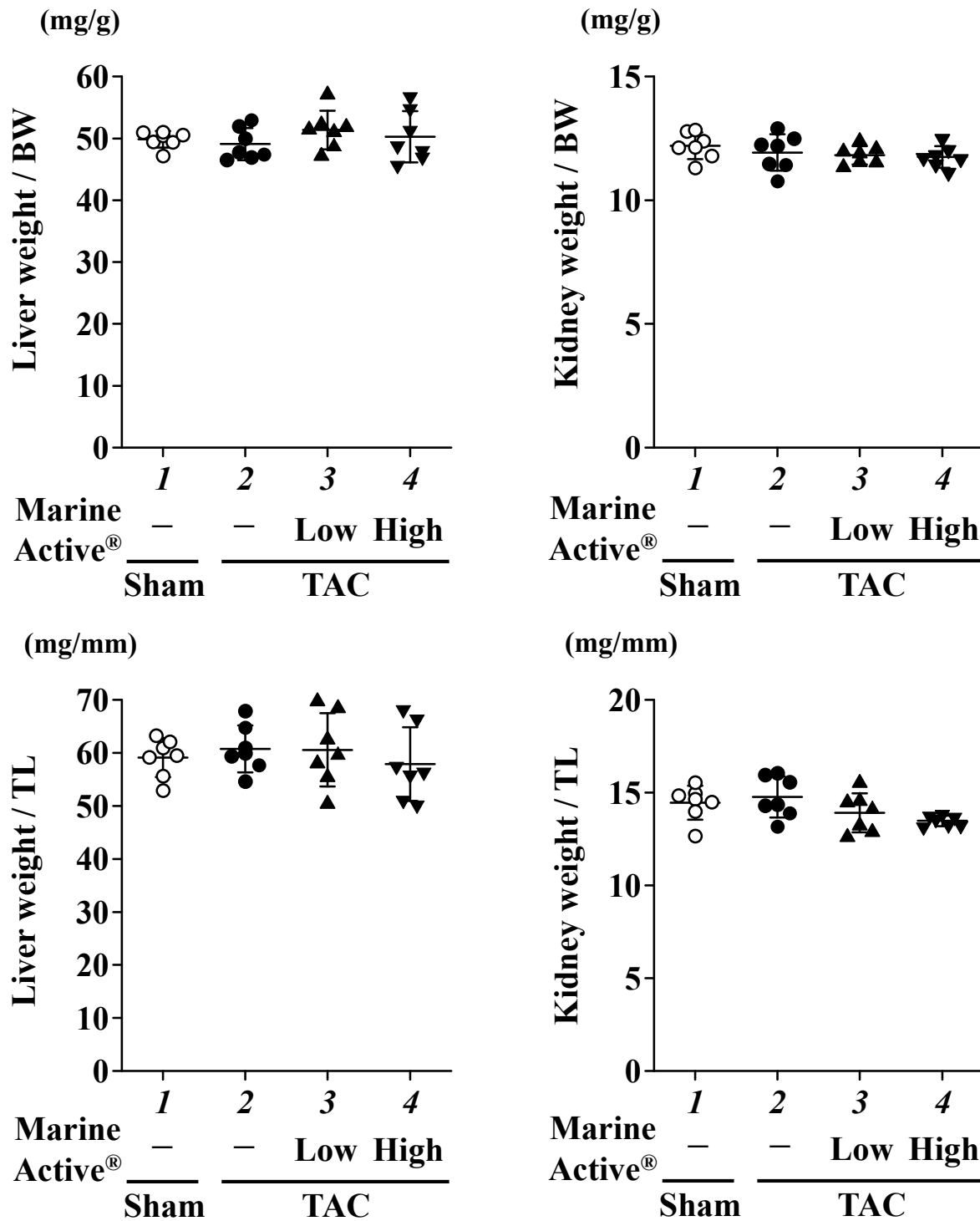


Supplemental Figure S1

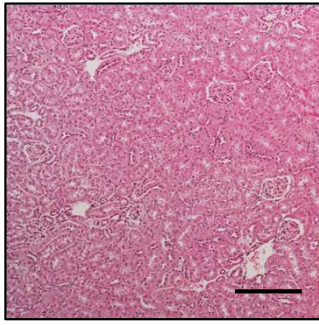


Supplemental Figure S1 Liver and kidney weights to BW or TL ratios at 8 weeks after TAC operation

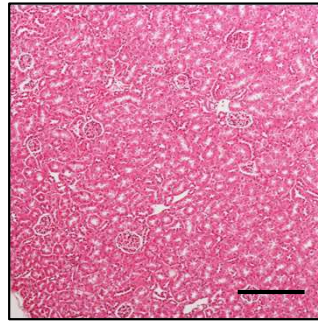
(A-D) The ratio of liver weight-to-BW (A), kidney weight-to-BW (B), liver weight-to-TL (C), and kidney weight-to-TL (D) are presented as dot plots. Data are presented as the means \pm SD (n=7).

Supplemental Figure S2

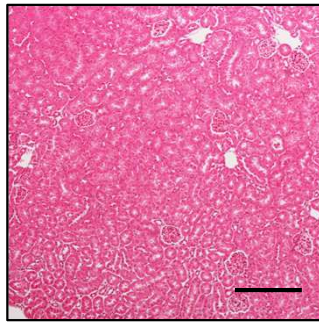
A



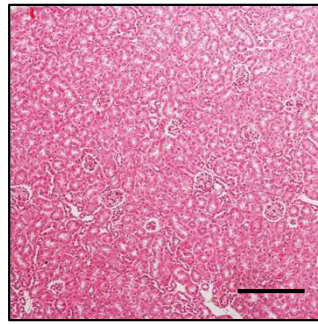
Sham + Vehicle



TAC + Vehicle

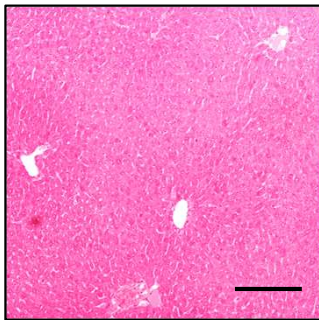


**TAC + Low dose
Marine Active[®]**

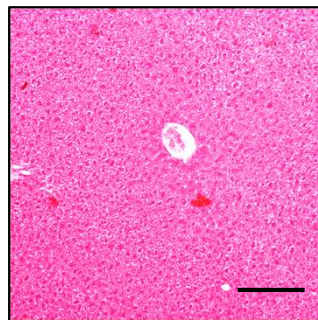


**TAC + High dose
Marine Active[®]**

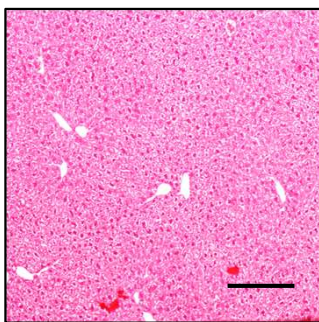
B



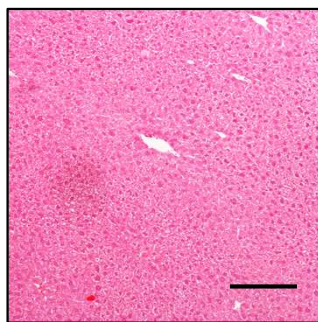
Sham + Vehicle



TAC + Vehicle



**TAC + Low dose
Marine Active[®]**



**TAC + High dose
Marine Active[®]**

Supplemental Figure S2 Microscopic photographs of liver and kidney tissues.

(A and B) Representative microscopic images of liver (A) and kidney (B) with HE staining were visualized by light microscopy. Scale bar: 200 μ m.