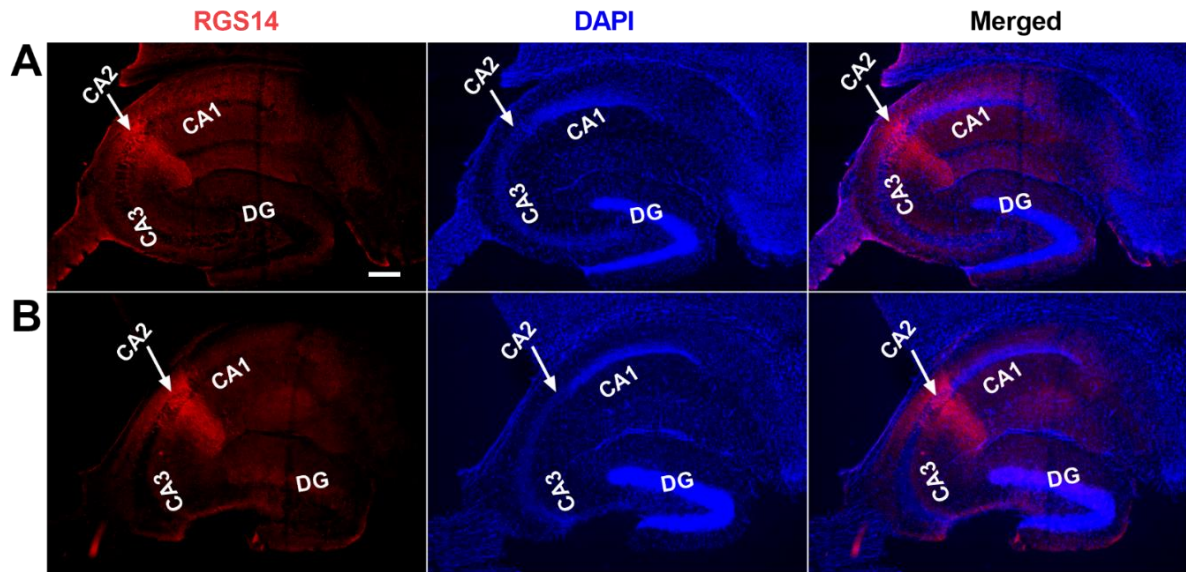
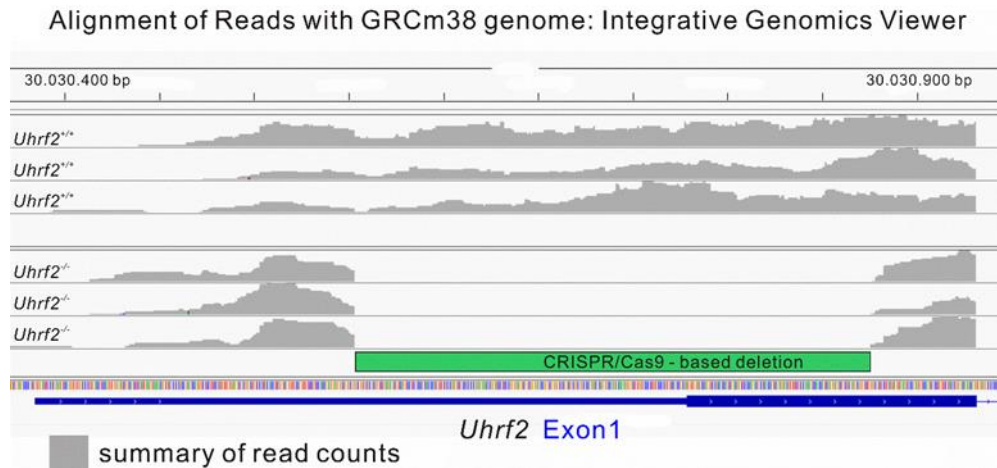


Supplemental Data



Supplemental Figure S1. Immunostaining of RGS14 as a CA2 marker.

(A-B) Immunofluorescence of transversal hippocampal slices depicting RGS14 expression (red) concentrated in the CA2 region. Nuclei are labeled with DAPI (blue). The horizontal white line indicates a distance of 200 μm. RGS14 immunostaining enables delineation of the CA2 boundaries. In A) a hippocampal slice from *Uhrf*^{+/+} and in B) from *Uhrf*^{-/-} is depicted.



Supplemental Figure S2. RNA sequencing confirms *Uhrf2* exon 1 modification.

Analysis of RNA sequencing reads validates the anticipated deletion (green region) of *Uhrf2* exon 1 in *Uhrf2*^{-/-} mice (n=3) relative to *Uhrf2*^{+/+} wildtype littermate controls (n=3). The deletion of exon 1 sequences is evident in the *Uhrf2* knockouts.