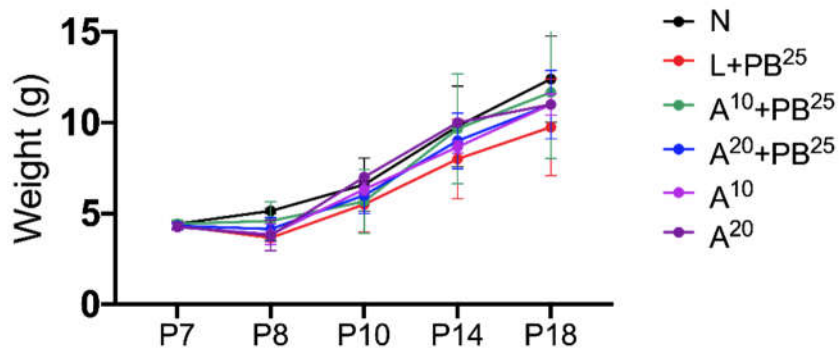
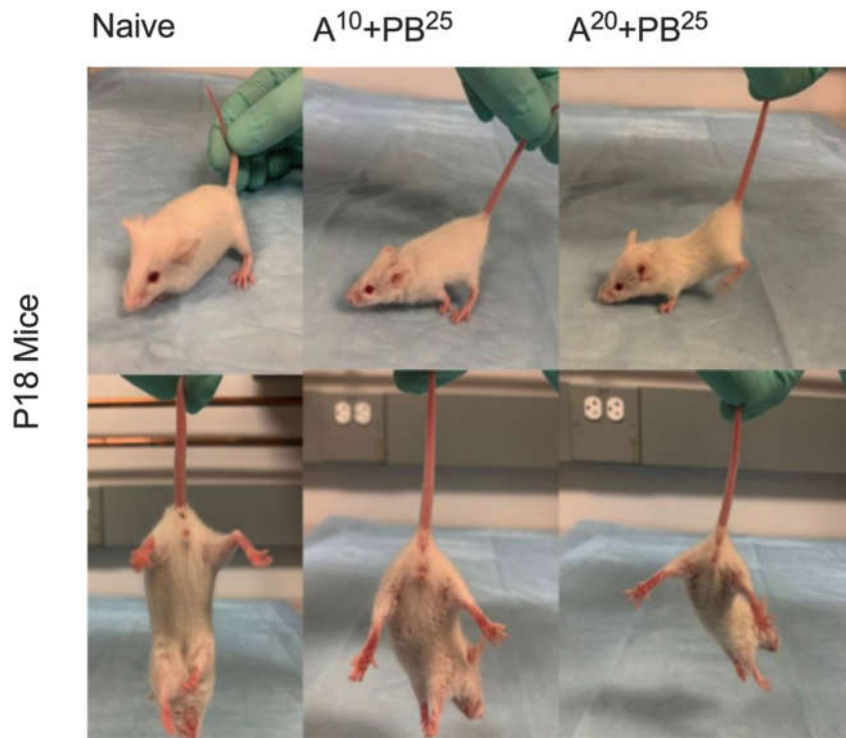


Supplementary Materials: The following supporting information can be downloaded at: <https://www.mdpi.com/article/10.3390/ijms25031447/s1>, Figure S1: Weights; Figure S2: Hind-limb Clasping Test.



Supplementary Figure S1. Weights. Weights (g) monitored from P7 to P18 for both female and male mice. No treatment groups showed any deficit in their ability to gain weight.



Supplementary Figure S2. Hind-limb Clasp Test. Hind-limb clasp test for graded doses of ANA12+PB²⁵ compared to the naïve. The treated animals showed no hind limb clasp. No significant difference in activity of the naïve or control groups were seen compared to graded doses of ANA12 with or without the addition of PB²⁵.