

Supplementary Materials

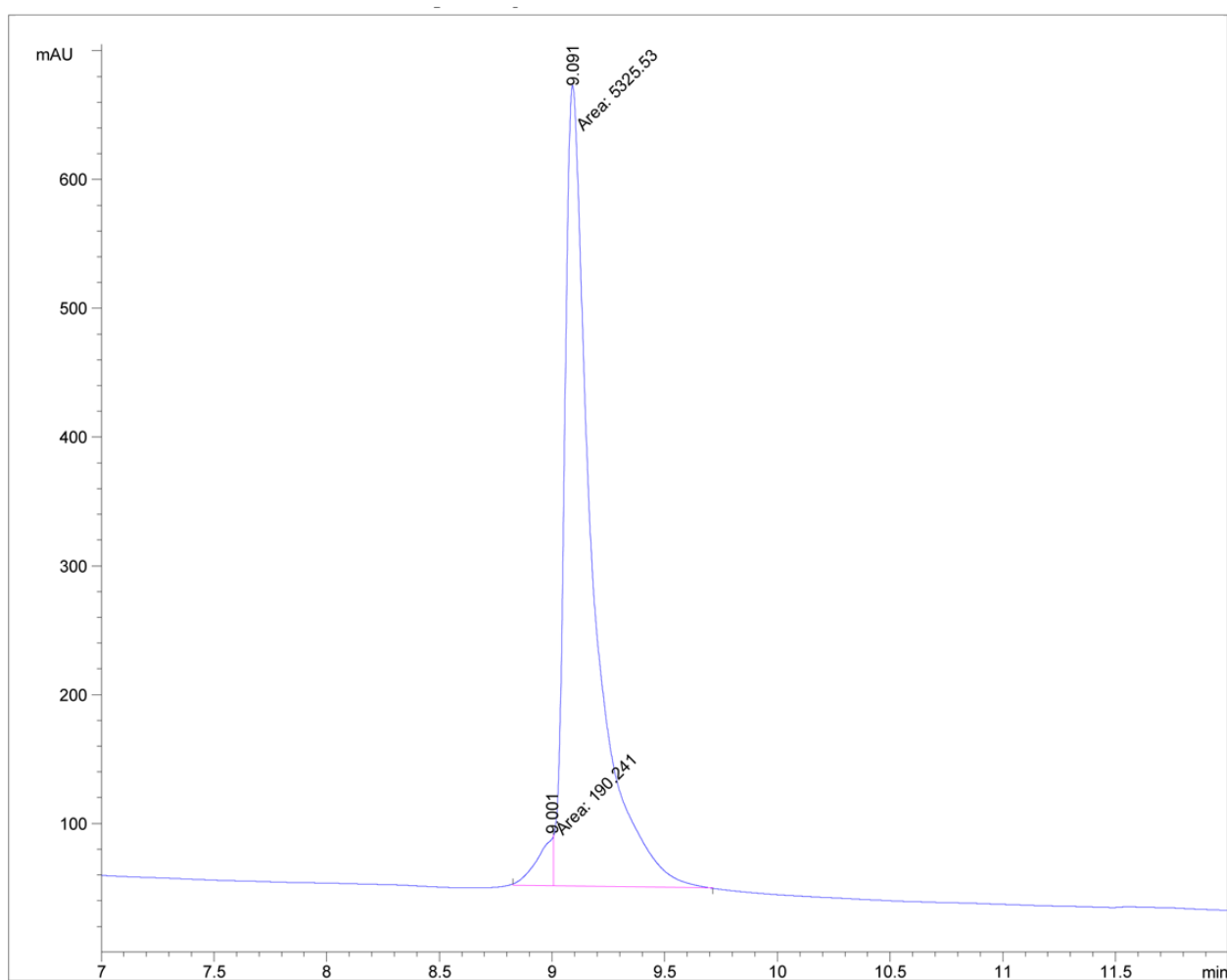


Figure S1. The purity of the tafalgin sample was analysed on Xbridge C18 column 130A (Waters, 4.6x250 mm).

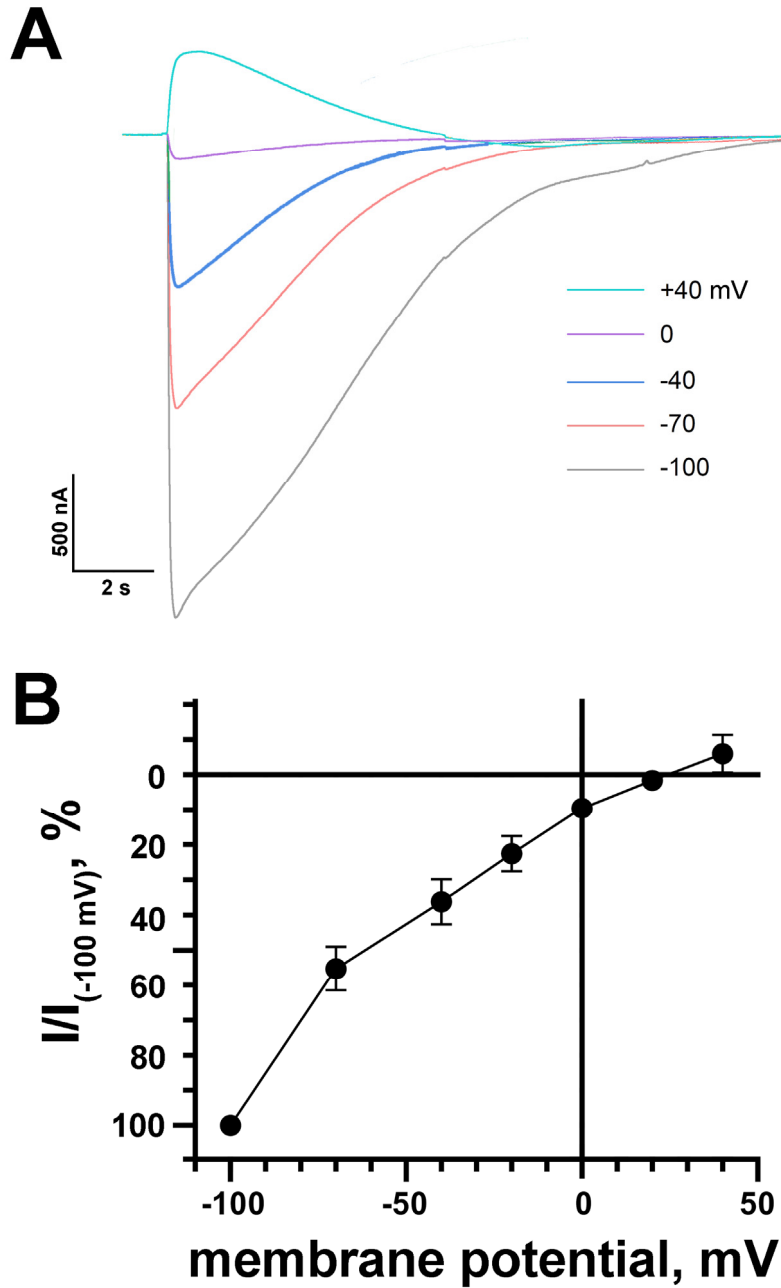


Figure S2. Current-voltage (I-V) relation of rat ASIC1a current. (A) Representative current traces at different holding potentials of ASIC1a heterologously expressed in *X. laevis* oocytes. (B) I-V plot of the currents recorded in the whole-cell configuration. For the I-V plot, currents elicited by pH 5.5 at different holding potentials were recorded. Current amplitudes were normalized to the amplitudes of the currents at $V = -100$ mV and plotted against the holding potentials. Each dot represents mean \pm SEM ($n = 5$).