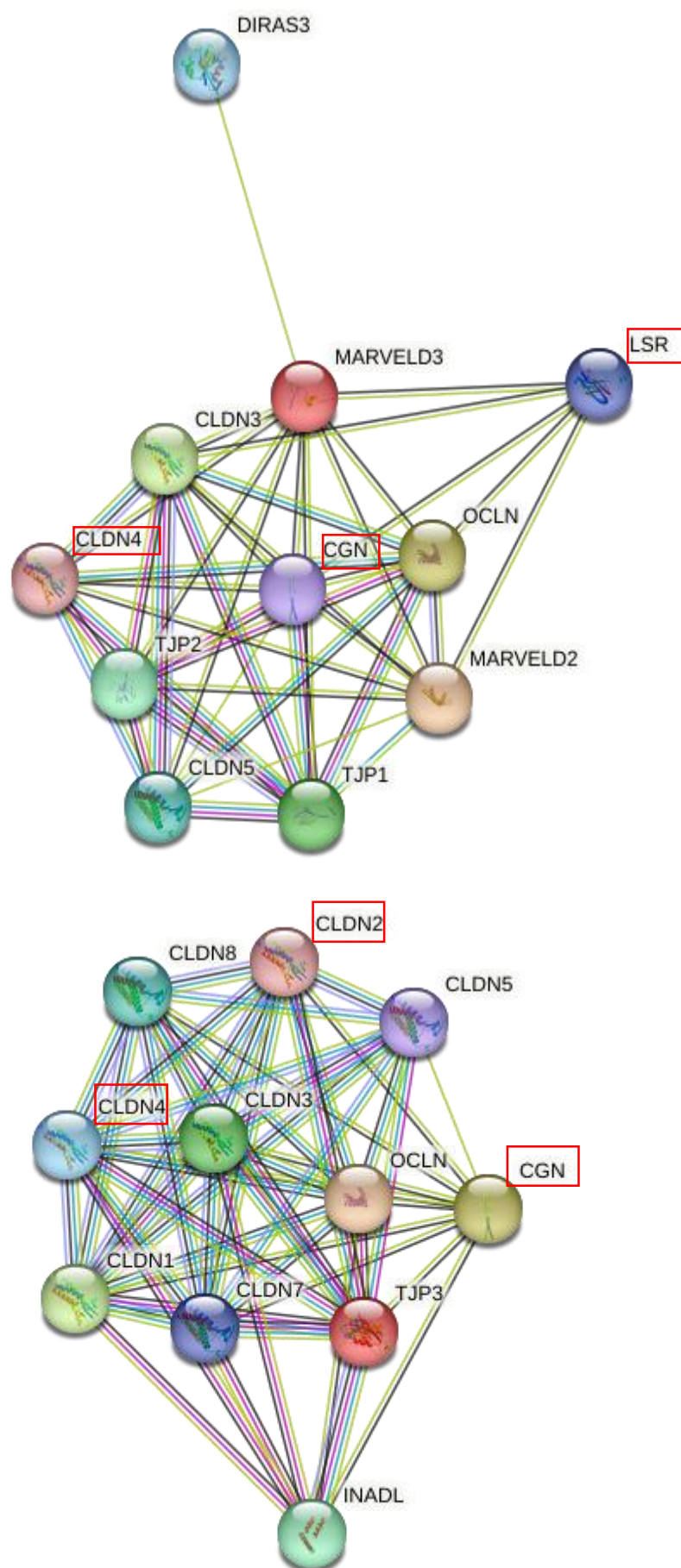


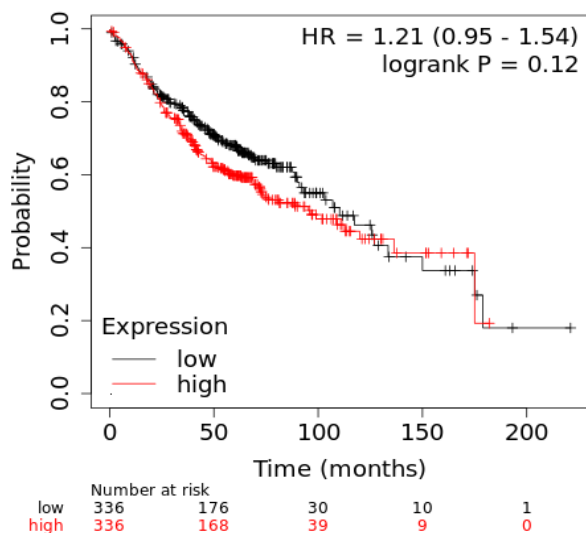
Supplemental Figure S1: Images of scratch wound assay in A549 cells performed knockdown of CLDN-4 and treated with TGF- β . The distance is shown as a bar graph. Scale bars: 200 μ m. ** $p < 0.01$, vs. control. Cell cycle assay of A549 cells performed knockdown of CLDN-4 and treated with TGF- β . The results are shown as bar graphs. ** $p < 0.01$, vs. control.



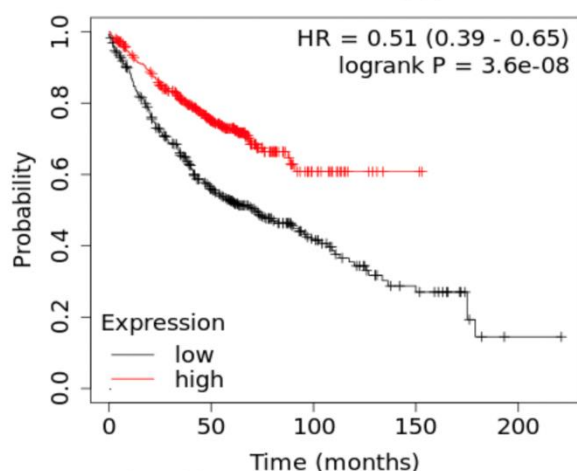
Supplemental Figure S2: Protein-protein interaction map. CGN directly interacts with CLDN-2, CLDN-4 and LSR.

Lung adenocarcinoma

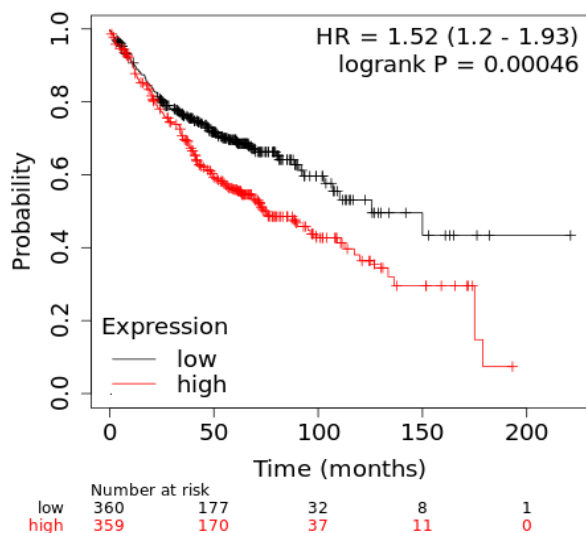
CGN (223233_s_at)



FOXO1 (202724_s_at)

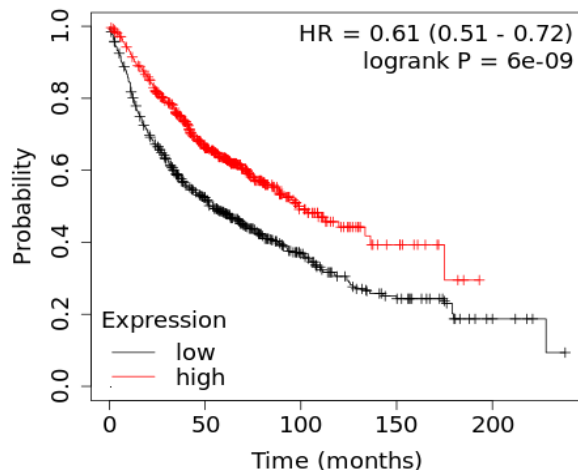


hCPE-R (201428_at) (CLDN-4)

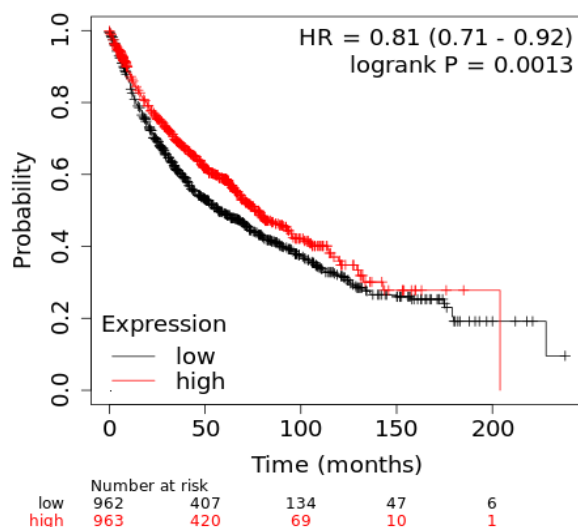


Lung cancer (all)

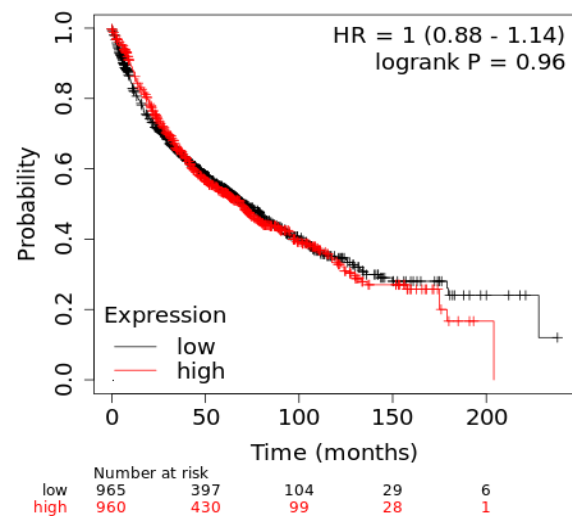
CGN (223232_s_at)



FOXO1 (202723_s_at)



hCPE-R (201428_at) (CLDN-4)



<http://kmplot.com/analysis/index.php?p=service&cancer=lung>

Supplemental Figure S3: TCGA shows the relation of CGN, FOXO1, and CLDN-4 expression and survival rate in lung cancer.