

Title: LDOC1 interacts with clathrin adaptors to controls EGFR internalization and gefitinib response in EGFR-Mutated Non–Small Cell Lung Cancer

Journal: International Journal of Molecular Science

Authors: Hsien-Neng Huang, Pin-Feng Hung, Yai-Ping Chen, Chia-Huei Lee*

Corresponding author: C.H.L.: chlee124@nhri.org.tw ; National Institute of Cancer Research, National Health Research Institutes, No. 35, Keyan Road, Zhunan Town, Miaoli 35053, Taiwan.

Supplementary Information

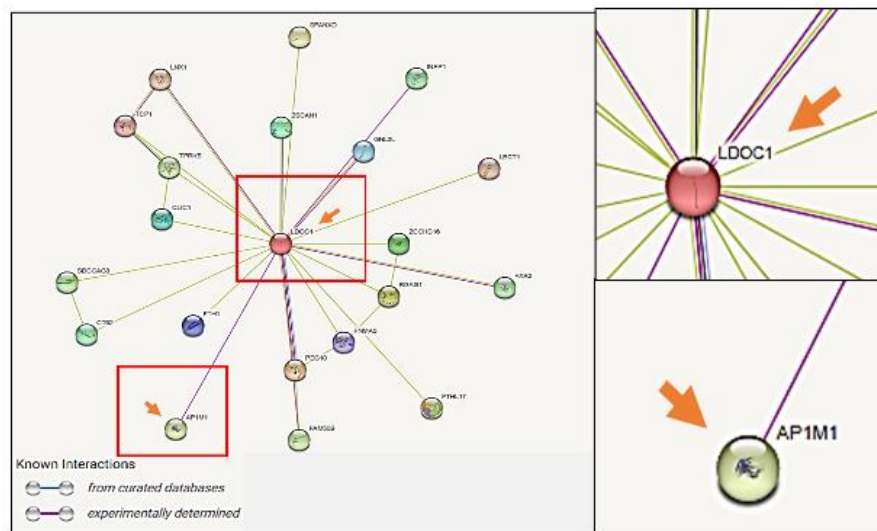


Fig. S1 STRING database predicts interaction between LDOC1 and AP1M1 [STRING: functional protein association networks (string-db.org) version 10.0]. Red arrows indicate LDOC1 and AP1M1.

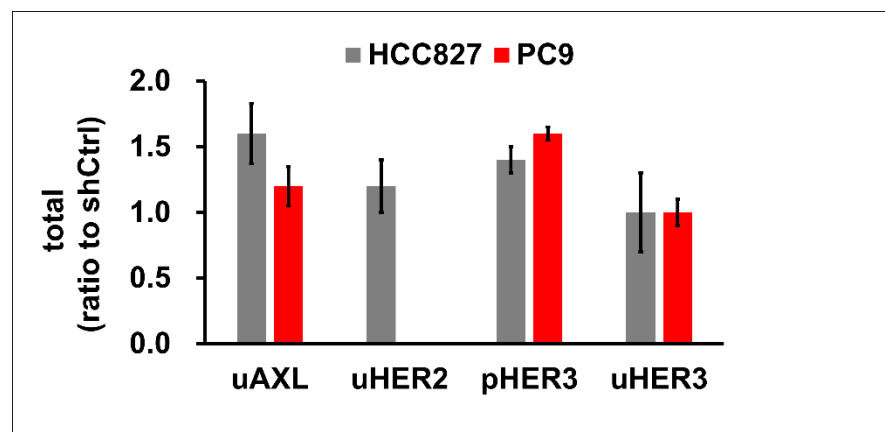


Fig. S2 [The summary of the semiquantitative data](#) regarding [total protein lysates](#) shown in Figure 3.

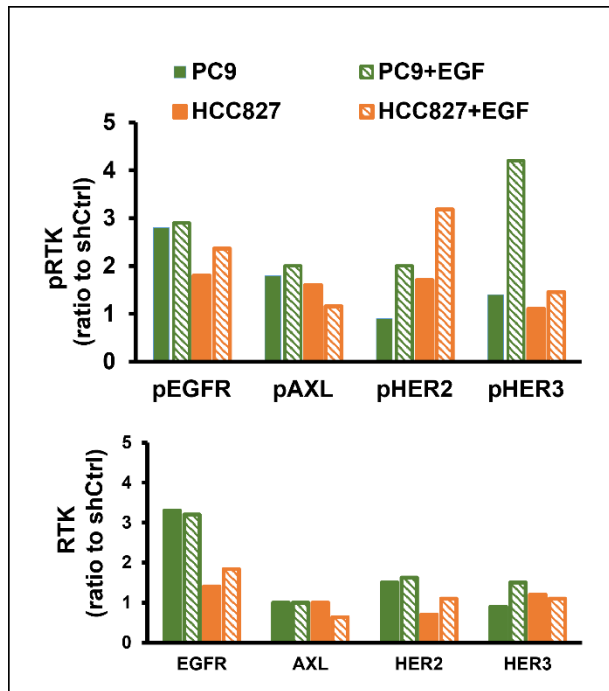


Fig. S3 Semiquantitative evaluation of the effect of LDOC1 depletion on the expression of phosphorylated (p) and unphosphorylated (u) EGFR in PC9 and HCC827 cells.