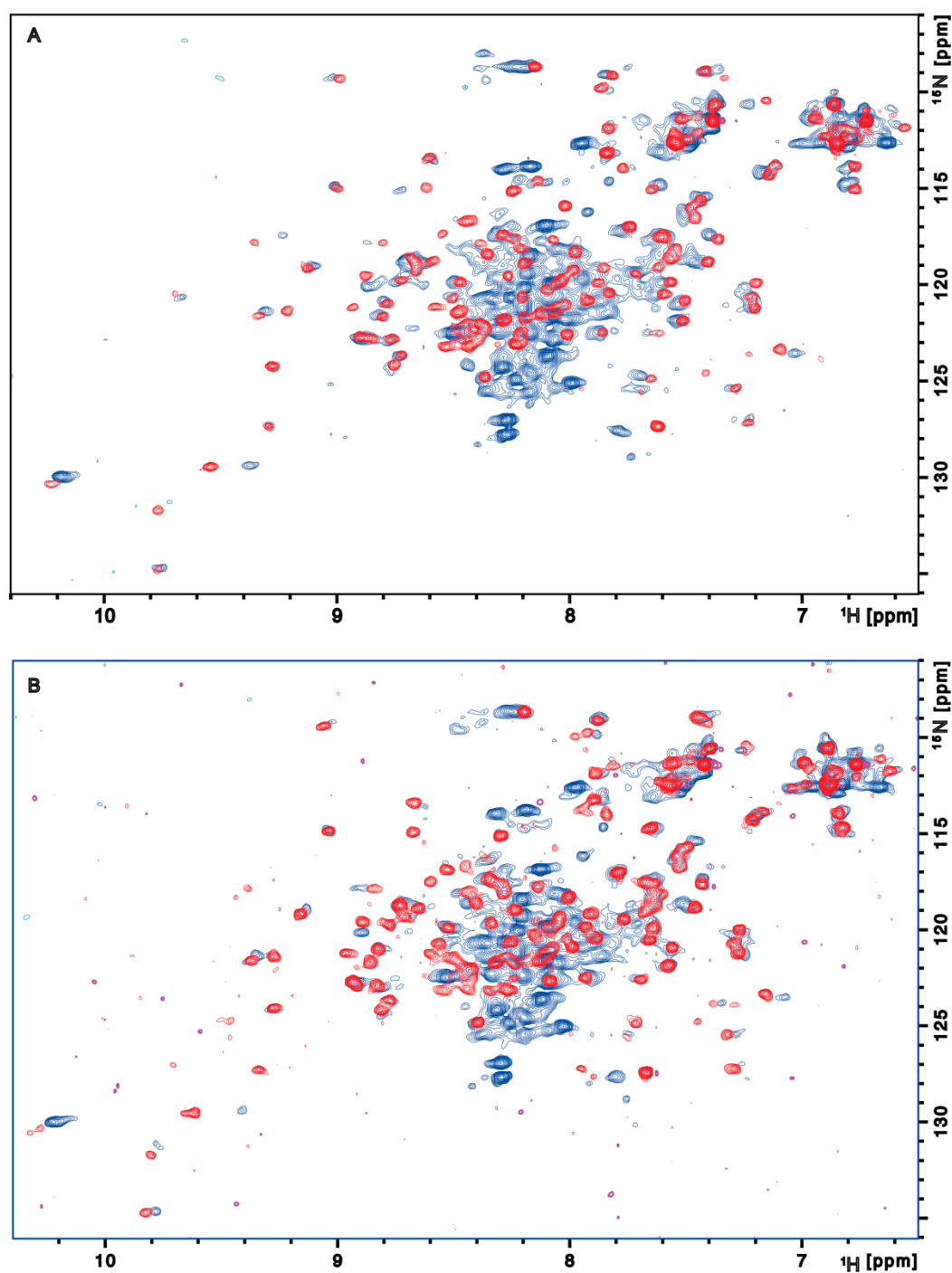


Supplementary Figure S1



**Figure S1.** (A)  $^1\text{H}$ - $^{15}\text{N}$  HSQC overlap of LF-ALR (residues 1–205; blue) and SF-ALR (residues 81–205; red); (B)  $^1\text{H}$ - $^{15}\text{N}$  HSQC overlap of LF-ALR in presence of MB6 (residues 1–205; blue) and SF-ALR in presence of MB6 (residues 81–205; red). To be noted that the chemical shifts difference of the protein in their native states are the same in the MB6 bound proteins.