

[illegible]

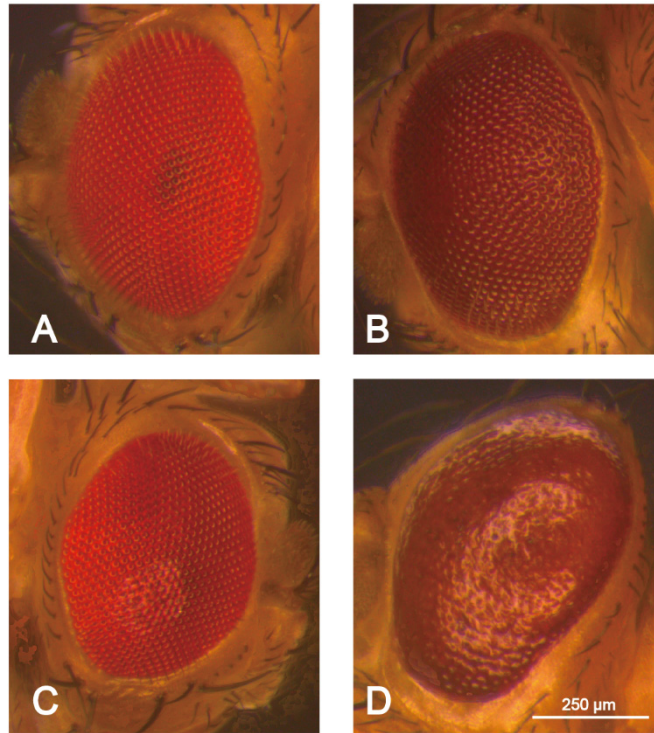


Figure S2. Images captured under a stereomicroscope depicting the eyes of *Drosophila* with various genotypes. (A) GMR-Gal4>*mGluR*-RNAi-1 (#THU2115). (B) GMR-Gal4>*mGluR*-RNAi-2 (#THU5288). (C) GMR>*mtt*-RNAi-2 (#THU0827). (D) GMR>*mtt*-RNAi-1 (#THU5594).