

Supplementary Materials

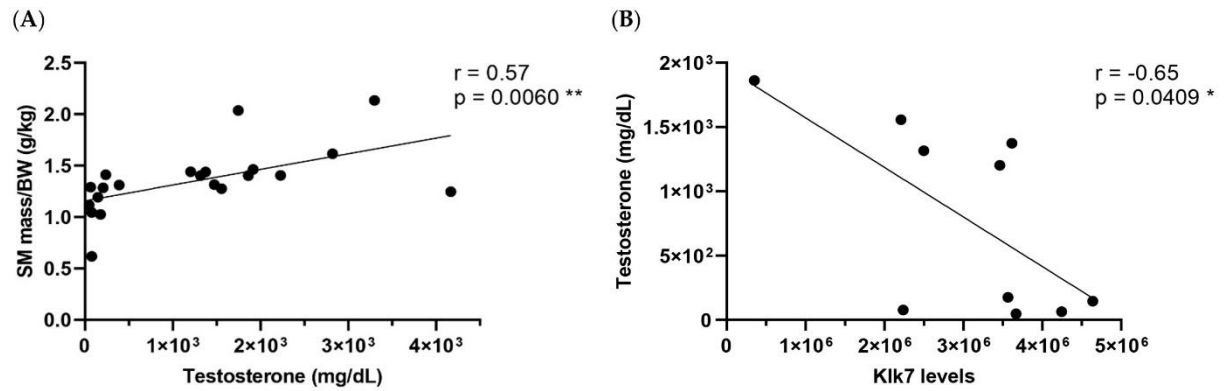


Figure S1. Pearson correlations were performed for an in-deep understanding of association between submandibular gland mass-to-body weight and testosterone levels (A), and testosterone and Kik7 (B). (* $p < 0.05$; ** $p < 0.01$).

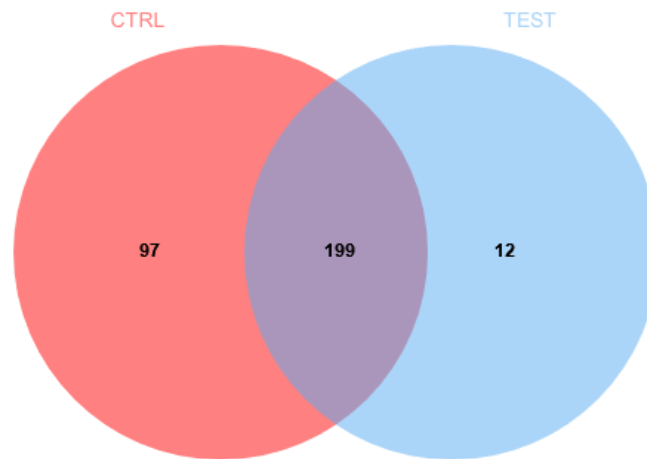


Figure S2. Venn diagram illustrating common proteins among CTRL and TEST groups, and exclusive proteins from each group. The represented figure was made with *jvenn* tool (jvenn.toulouse.inrae.fr).

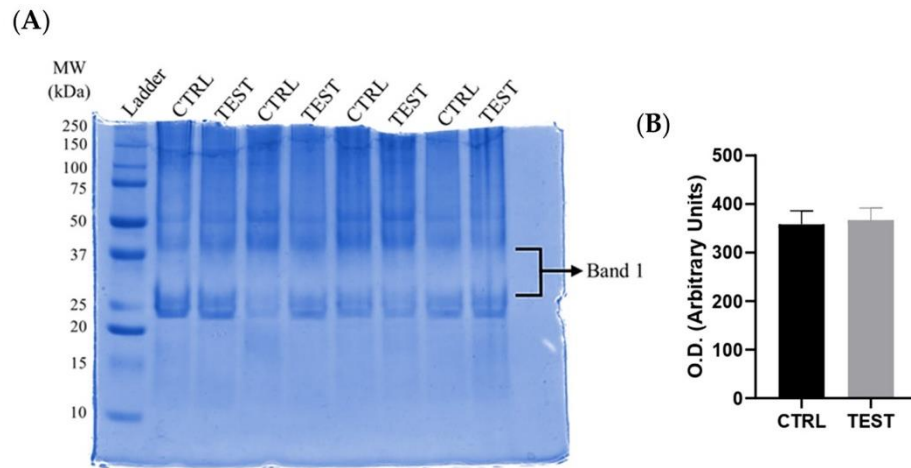


Figure S3. Zymography analysis of submandibular gland samples from CTRL and TEST. (A) Representative zymography gel of alternated submandibular gland samples from CTRL group and TEST group. A representative molecular weight standard (ladder) is shown. The band identified with proteolytic activity can be observed in the molecular weight range between ≈ 25 kDa and ≈ 40 kDa. (B) Optical density measurements of the referred samples obtained from *Image Lab* (O.D. is presented in arbitrary units).

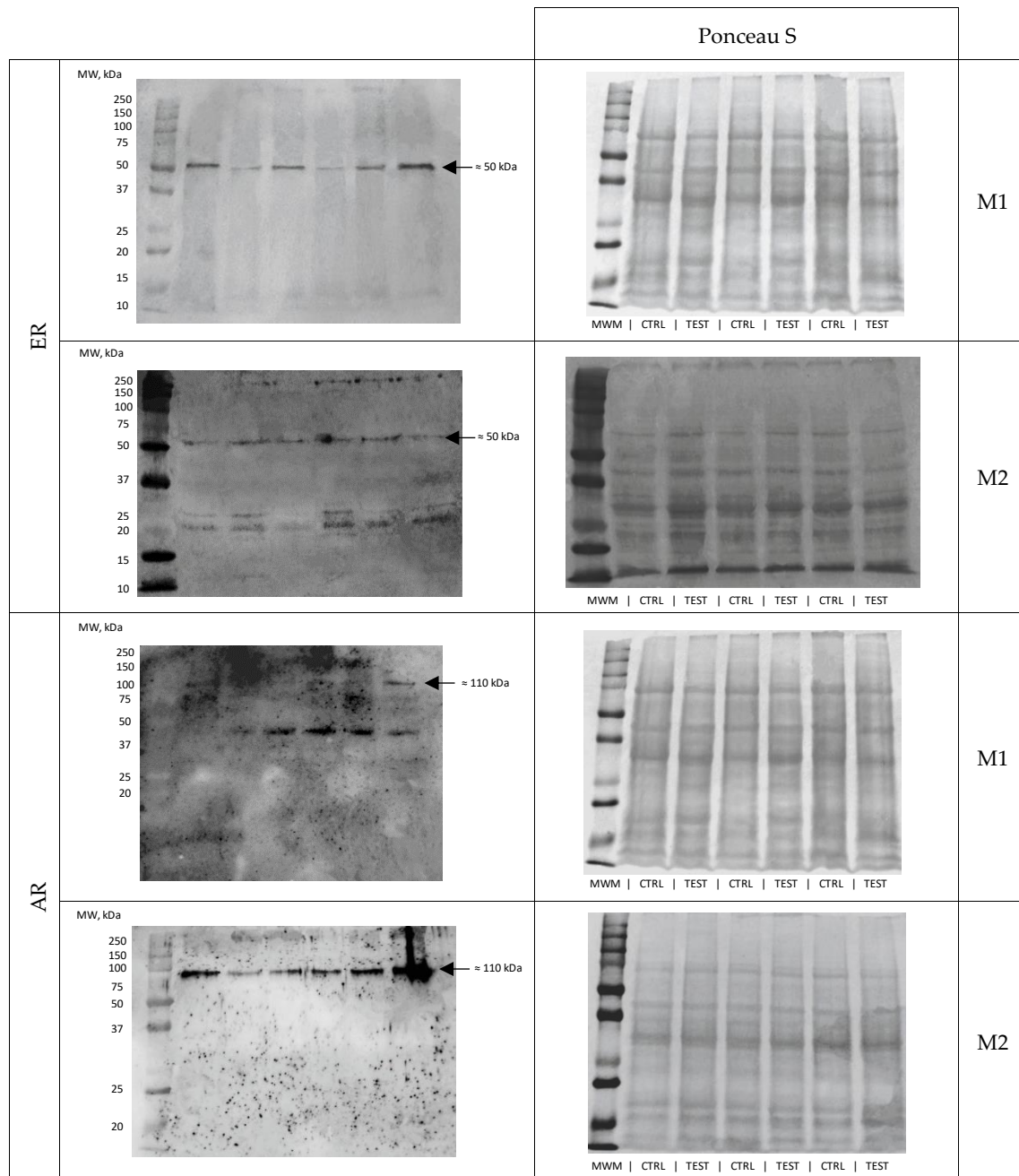


Figure S4. Ponceau S-stained nitrocellulose membranes and corresponding immunoblots of the proteins evaluated. MW, Molecular Weight.