

Supplementary material

Analysis of humoral response in MG subgroups categorized as MG AChR Ab+, MG MuSK Ab+, and MG Double Seronegative (MG-DSN). Each patient was specifically matched with one control subject based on gender and age.

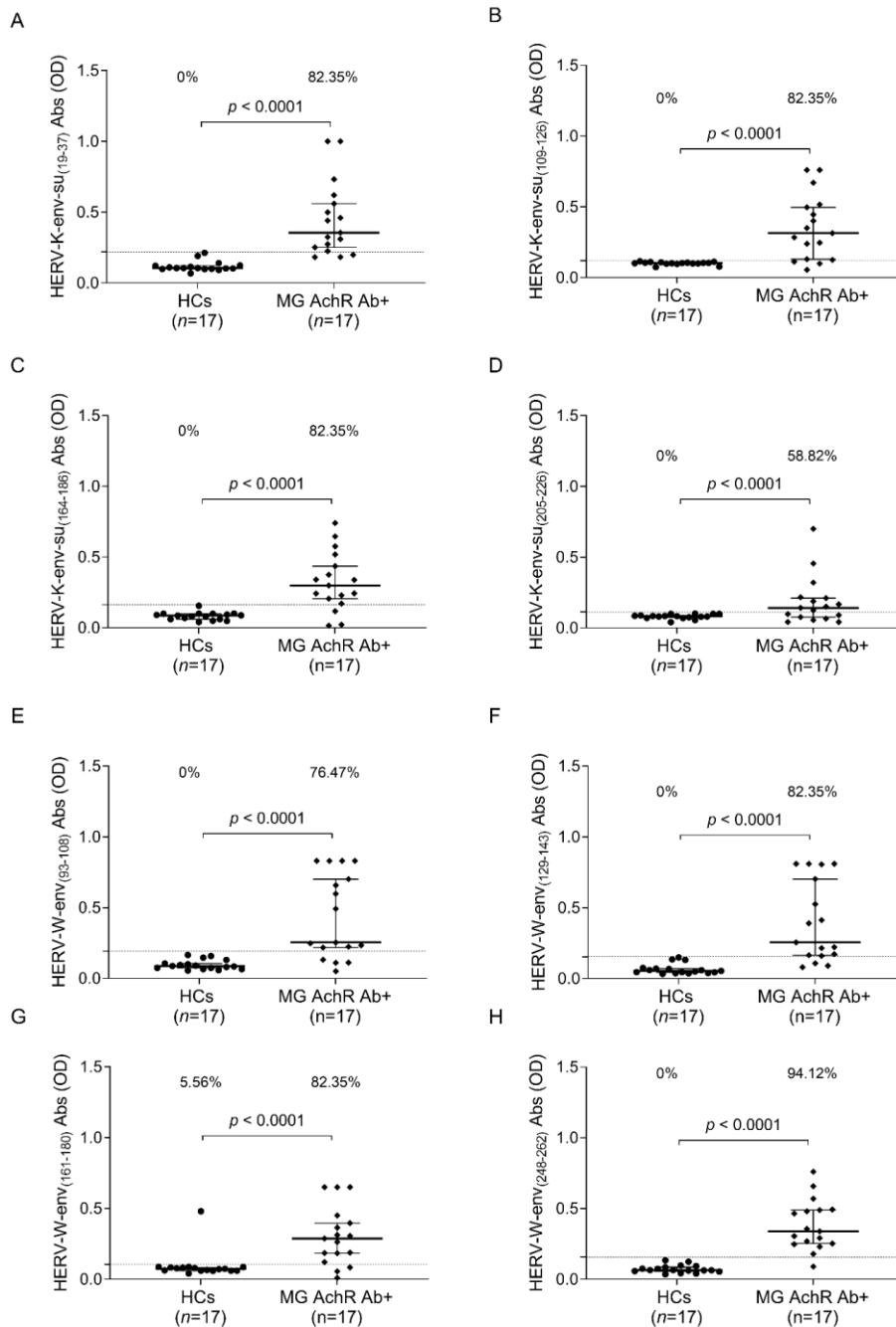


Figure S1. ELISA-based analysis of Abs reactivity against HERV-K-env-su and HERV-W-env-su derived peptides. Plasma samples from the MG-AChR Ab+ patients and HCs subjects were tested against HERV-K-env-su₍₁₉₋₃₇₎(A), HERV-K-env-su₍₁₀₉₋₁₂₆₎ (B), HERV-K-env-su₍₁₆₄₋₁₈₆₎ (C), HERV-K-env-su₍₂₀₅₋₂₂₆₎ (D), HERV-W-env-su₍₉₃₋₁₀₈₎ (E), HERV-K-env-su₍₁₂₉₋₁₄₃₎ (F), HERV-K-env-su₍₁₆₁₋₁₈₀₎ (G) and HERV-K-env-su₍₂₄₈₋₂₆₂₎ (H) peptides. The median and dashed lines delineate the thresholds employed to determine sample positivity. The upper section of each graph displays the *p*-value and the proportion of positive patients, as determined by Fisher's exact test.

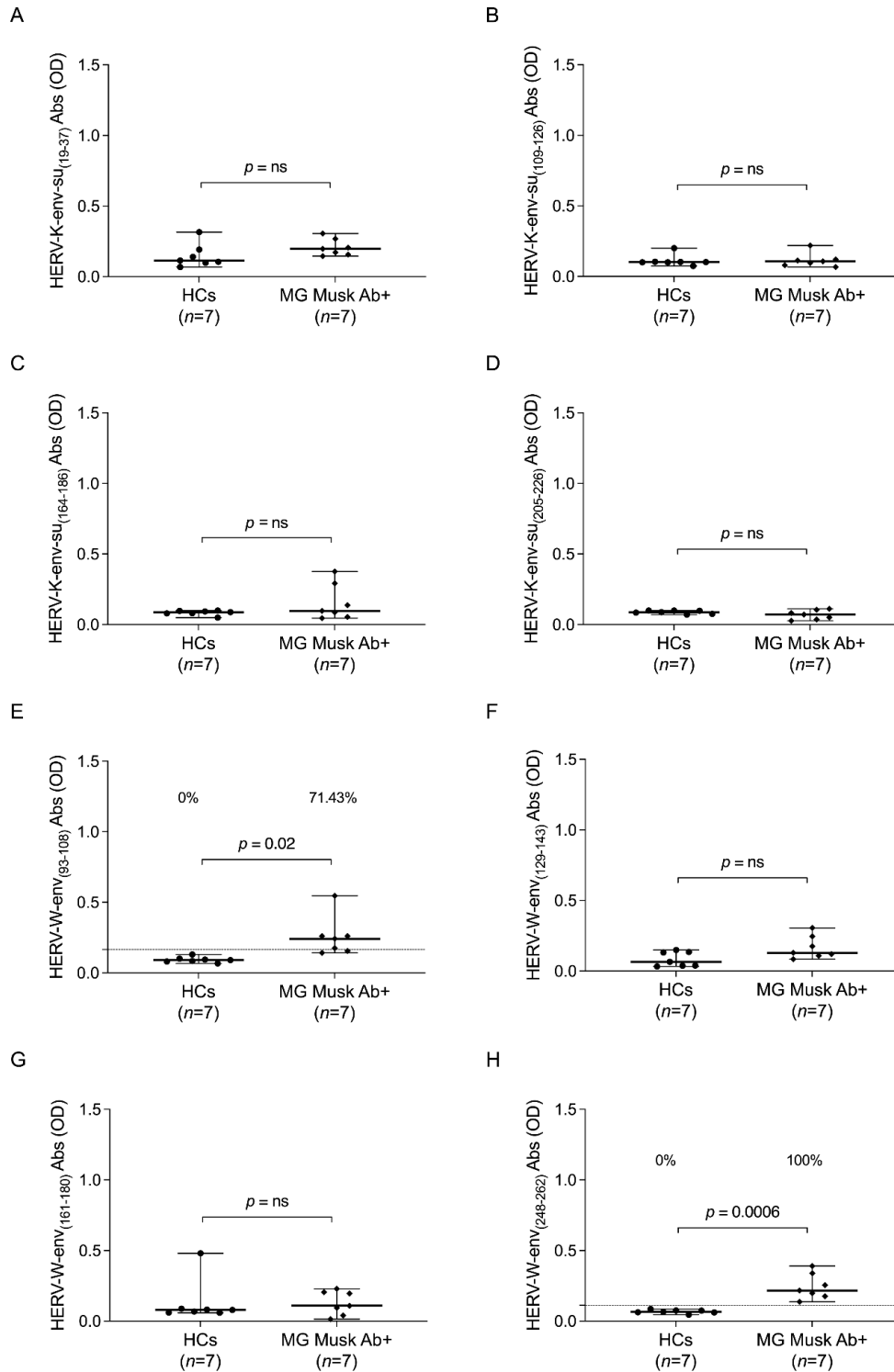


Figure S2. ELISA-based analysis of Abs reactivity against HERV-K-env-su and HERV-W-env-su derived peptides. Plasma samples from the MG-Musk Ab⁺ patients and HCs subjects were tested against HERV-K-env-su₍₁₉₋₃₇₎(A), HERV-K-env-su₍₁₀₉₋₁₂₆₎ (B), HERV-K-env-su₍₁₆₄₋₁₈₆₎ (C), HERV-K-env-su₍₂₀₅₋₂₂₆₎ (D), HERV-W-env-su₍₉₃₋₁₀₈₎ (E), HERV-K-env-su₍₁₂₉₋₁₄₃₎ (F), HERV-K-env-su₍₁₆₁₋₁₈₀₎ (G) and HERV-K-env-su₍₂₄₈₋₂₆₂₎ (H) peptides. The median and dashed lines delineate the thresholds employed to determine sample positivity. The upper section of each graph displays the p -value and the proportion of positive patients, as determined by Fisher's exact test.

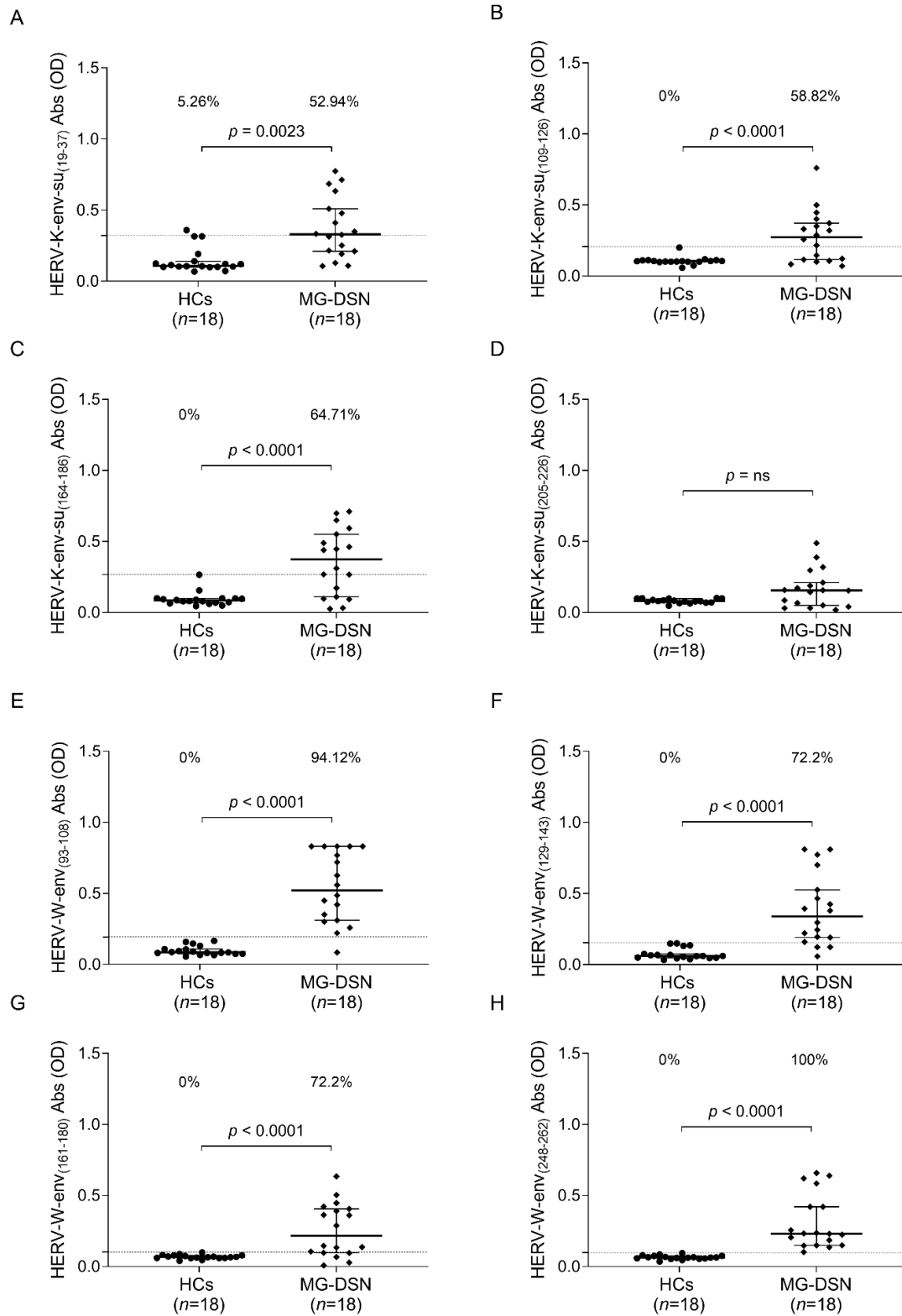


Figure S3. ELISA-based analysis of Abs reactivity against HERV-K-env-su and HERV-W-env-su derived peptides. Plasma samples from the MG-DSN patients and HCs subjects were tested against HERV-K-env-su₍₁₉₋₃₇₎(A), HERV-K-env-su₍₁₀₉₋₁₂₆₎ (B), HERV-K-env-su₍₁₆₄₋₁₈₆₎ (C), HERV-K-env-su₍₂₀₅₋₂₂₆₎ (D), HERV-W-env-su₍₉₃₋₁₀₈₎ (E), HERV-K-env-su₍₁₂₉₋₁₄₃₎ (F), HERV-K-env-su₍₁₆₁₋₁₈₀₎ (G) and HERV-K-env-su₍₂₄₈₋₂₆₂₎ (H) peptides. The median and dashed lines delineate the thresholds employed to determine sample positivity. The upper section of each graph displays the *p*-value and the proportion of positive patients, as determined by Fisher's exact test.