

Supplementary File

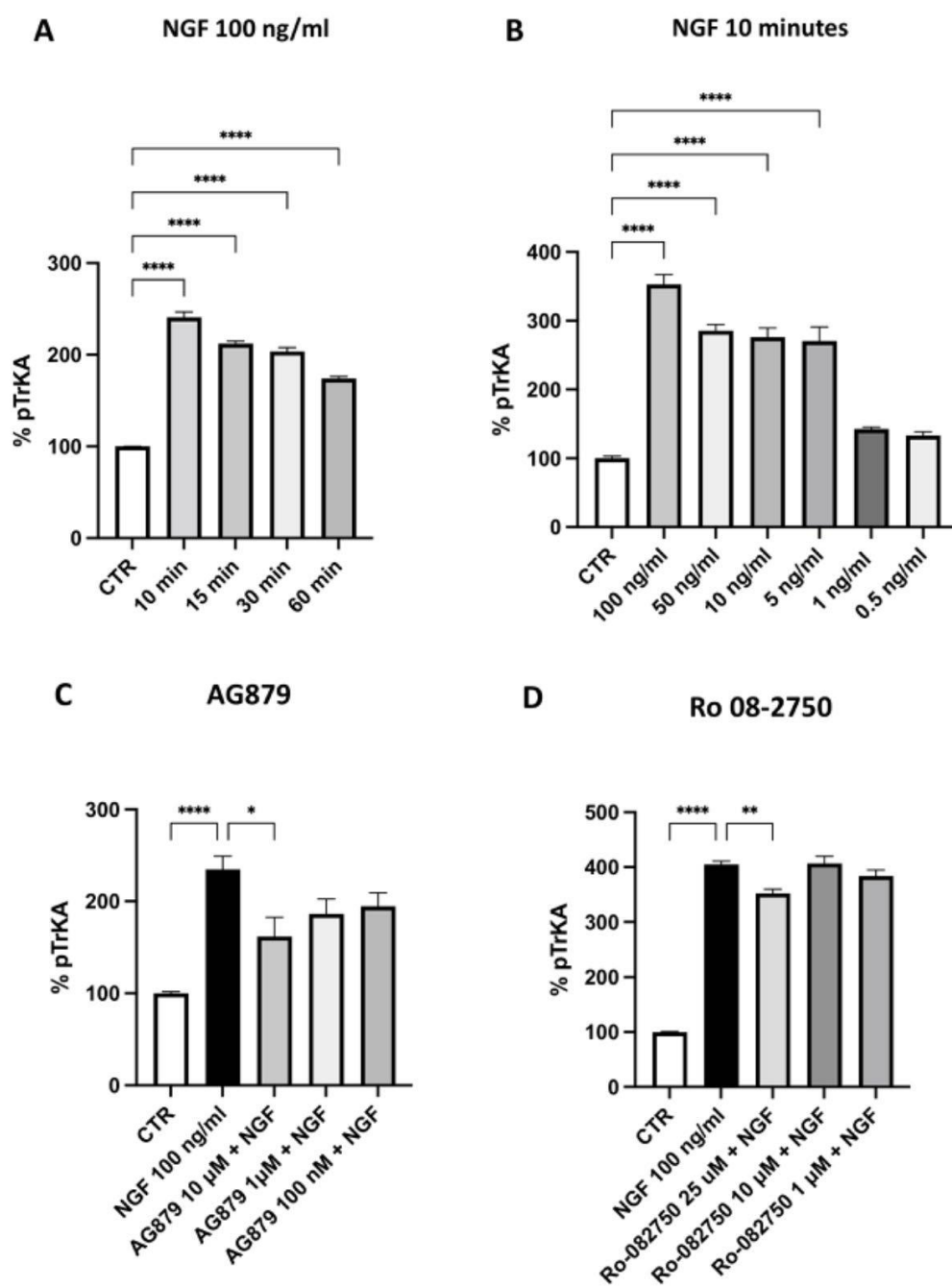


Figure S1. Time (A) and concentration (B) dependency of NGF for TrkA receptor activation in SH-SY5Y neuroblastoma cells and inhibition by two reference compounds (C and D). Each value represents the mean \pm S.E.M. of independent experiments with respect to the control (100%). **** $p < 0.0001$, ** $p \leq 0.01$, * $p \leq 0.05$; Dunnett's Multiple Comparison post-hoc test (A) and Tukey's Multiple Comparison post-hoc test (B), $n = 3$.