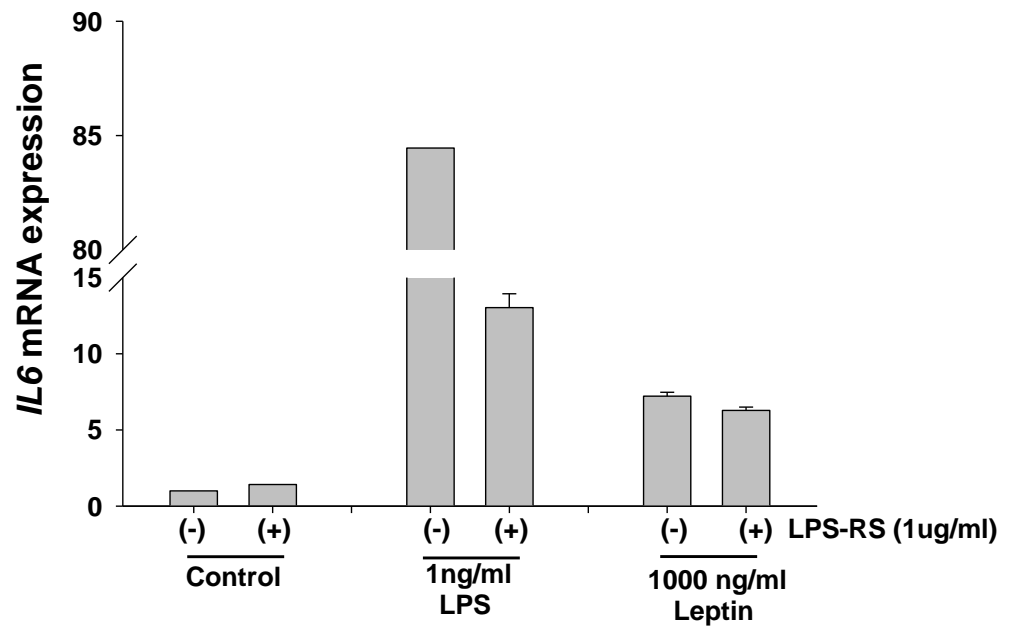


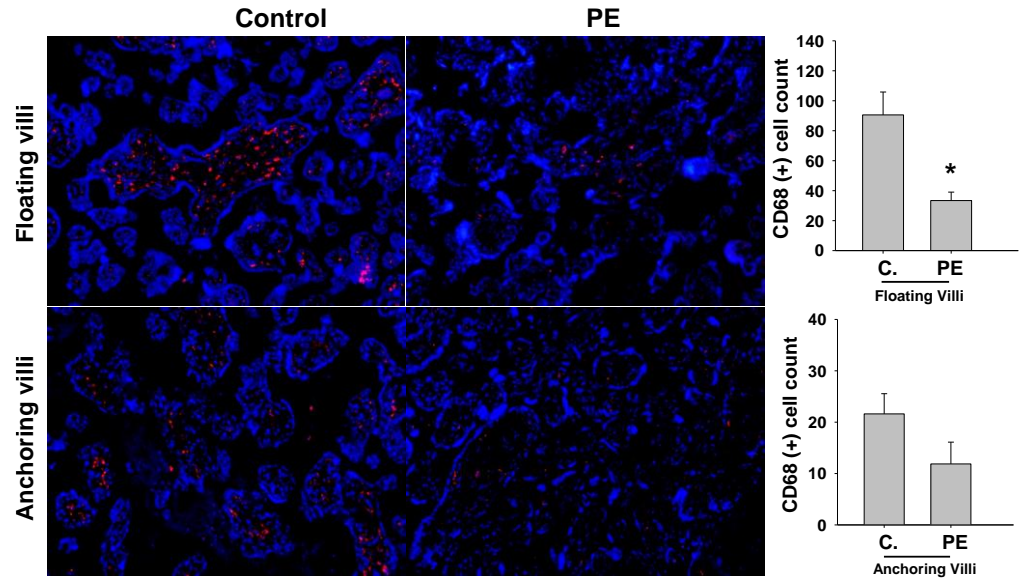
Supplementary Materials:

Supplementary Figure S1.



Supplementary Figure S1. Evaluation of the effect of residual endotoxin contamination of r-leptin on IL-6 expression. *IL-6* mRNA expression in primary cultured Hofbauer cells that were pre-incubated with 1 μ g/ml LPS antagonist (LPS-RS) for 1h, then incubated with either 1ng/ml LPS or 1000 ng/ml r-leptin for 6 h. LPS-RS treatment downregulated LPS-induced IL-6 mRNA levels, but no effect on r-leptin-induced IL-6 mRNA levels. Bars represent mean \pm SEM, n=2 repeat from one cultured Hofbauer cells.

Supplementary Figure S2.



Supplementary Figure S2. CD68 (+) HBCs in control vs. PE placentas. Immunohistochemistry revealed a smaller number of CD68(+) cells both in floating villi (33.40 ± 5.63 vs. 90.53 ± 15.28 , $p < 0.05$) and anchoring villi (11.87 ± 4.24 vs. 21.60 ± 3.94 , $p = 0.131$) of PE placentas compared to their GA- match controls. Red:CD68 (+) staining, blue: DAPI counterstaining. Magnification 20x. PE: Preeclampsia, Bars represent mean \pm SEM, $n = 5$, *: $p < 0.05$ analyzed by Mann Whitney Rank Sum test.