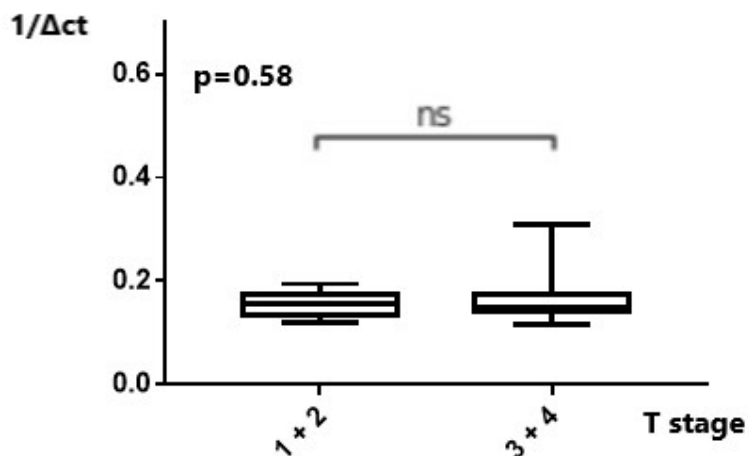


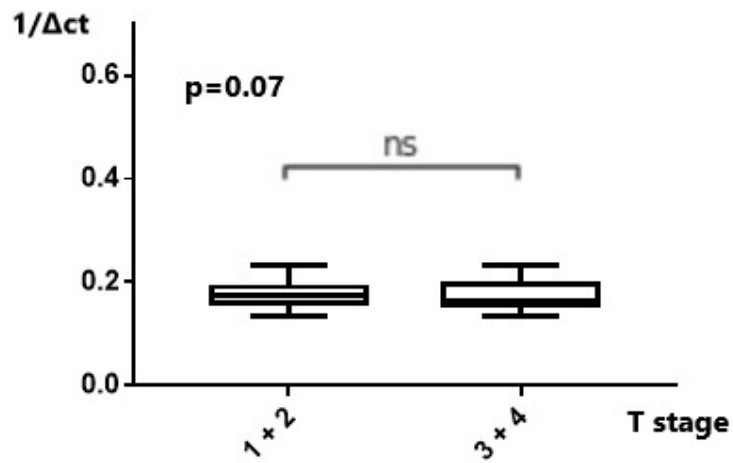
Supplemental Table S1: Primers used in this study

Molecule names	Sequences (5' to 3')
<i>MALAT1</i>	F-GAATTGCGTCATTTAAAGCCTAGTT R-GTTTCATCCTACCACTCCCAATTAAT
<i>MANCR</i>	F-TCCACTCACCCTCGCTCAC R-CAGGATTAGCACGTTCCAGG
<i>PSMA3-AS1</i>	F-AACAGACCATCAGAAGAGAACA R-GAACAGAAACCAGAGCCATACA
<i>MiR-101</i>	F-GAGGGGTACAGTACTGTGATA R-TGCGTGTCGTGGAGTC

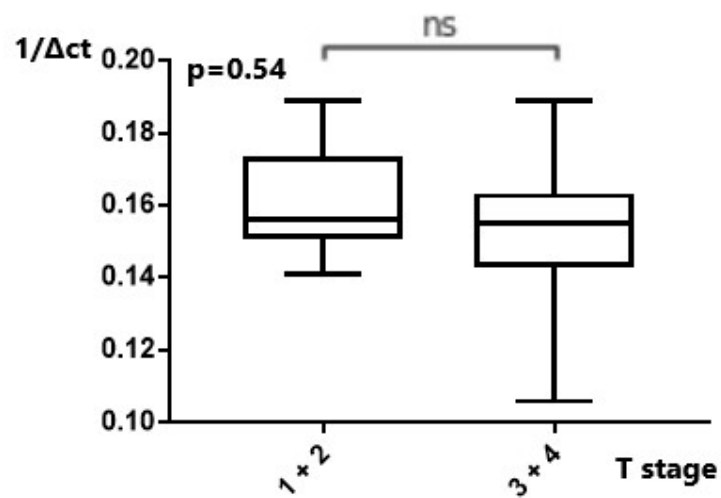
Supplementary Figure S1: Expression of MALAT1 in relation to grouped T-stage. ns: not significant



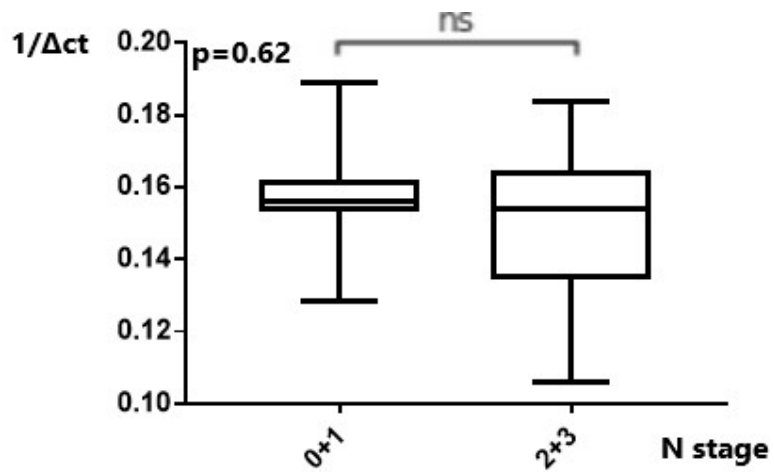
Supplementary Figure S2: Expression of MANCR in relation to grouped T-stage. ns: not significant



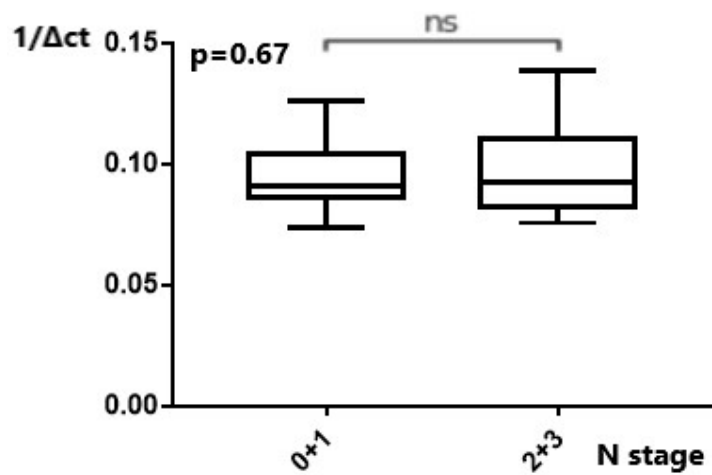
Supplementary Figure S3: Expression of PSMA3-AS1 in relation to grouped T-stage. ns: not significant



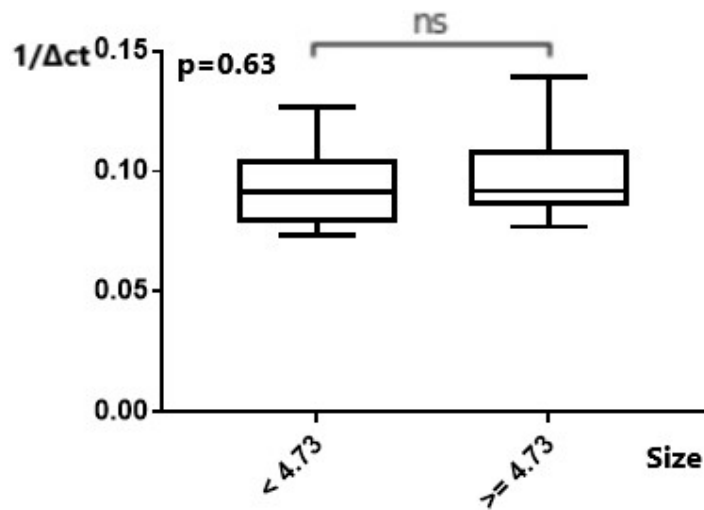
Supplementary Figure S4: Expression of PSMA3-AS1 in relation to N stage. ns: not significant



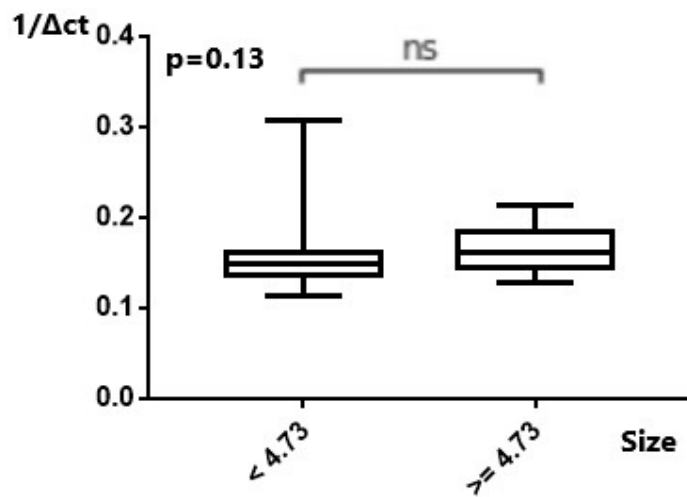
Supplementary Figure S5: Expression of miR-101 in relation to N stage. ns: not significant



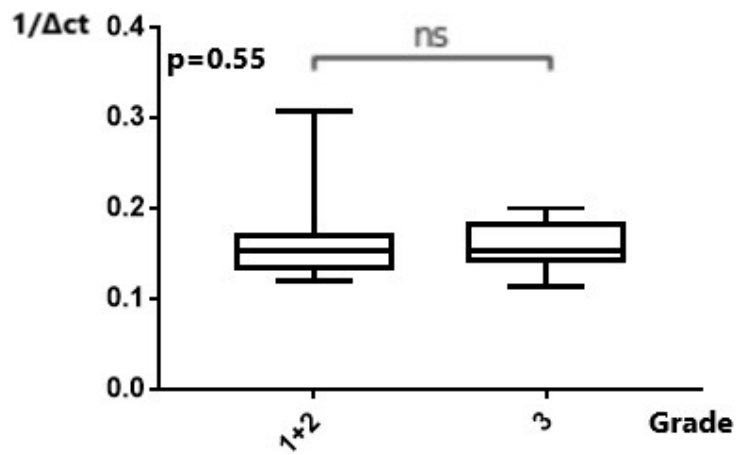
Supplementary Figure S6: Expression of miR-101 in relation to the size of the tumor. ns: not significant



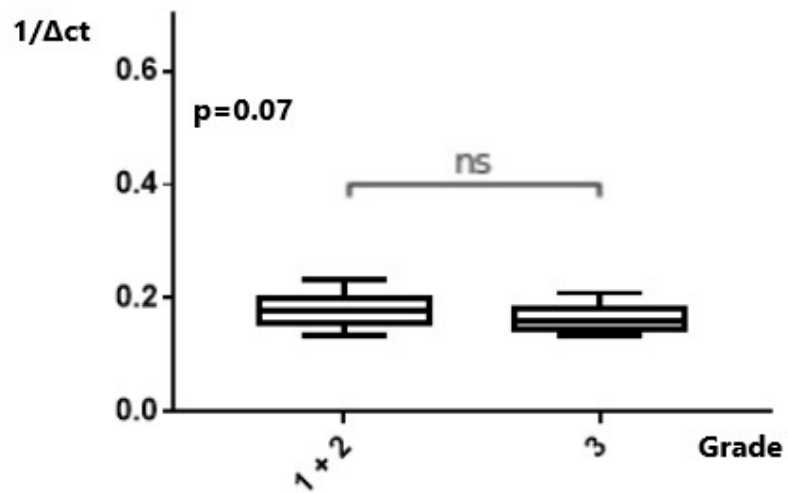
Supplementary Figure S7: Expression of MALAT1 in relation to the size of the tumor. ns: not significant



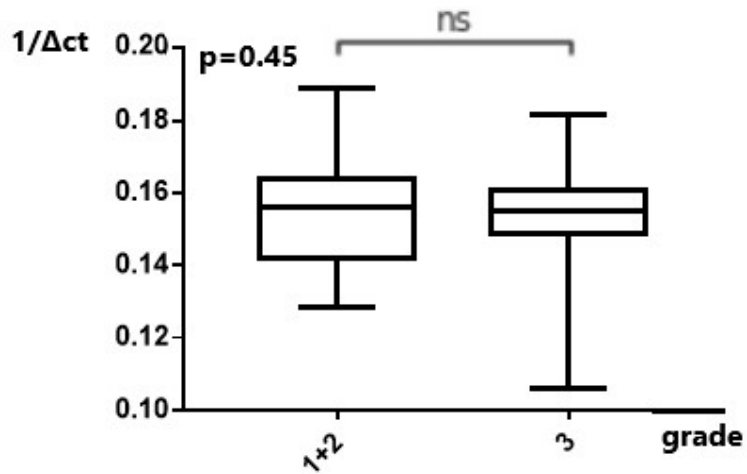
Supplementary Figure S8: Expression of MALAT1 in relation to the grade of the tumor. ns: not significant



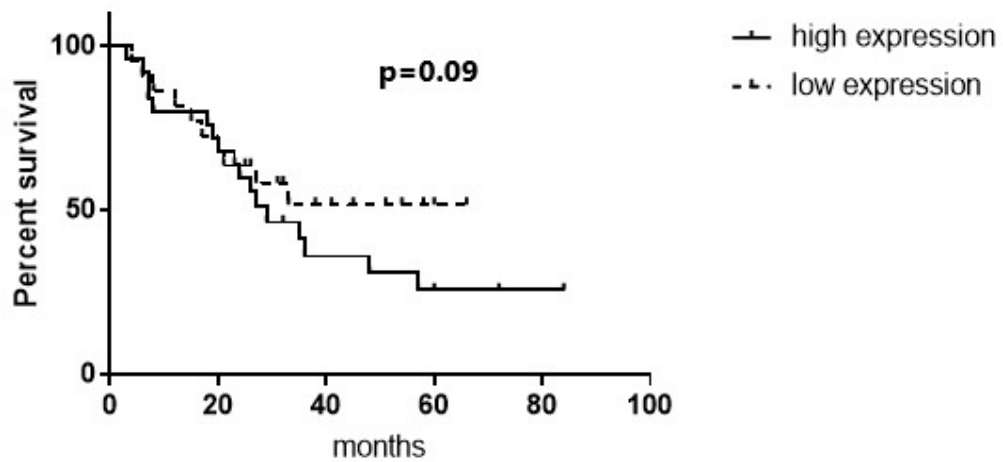
Supplementary Figure S9: Expression of MANCR in relation to grade. ns: not significant



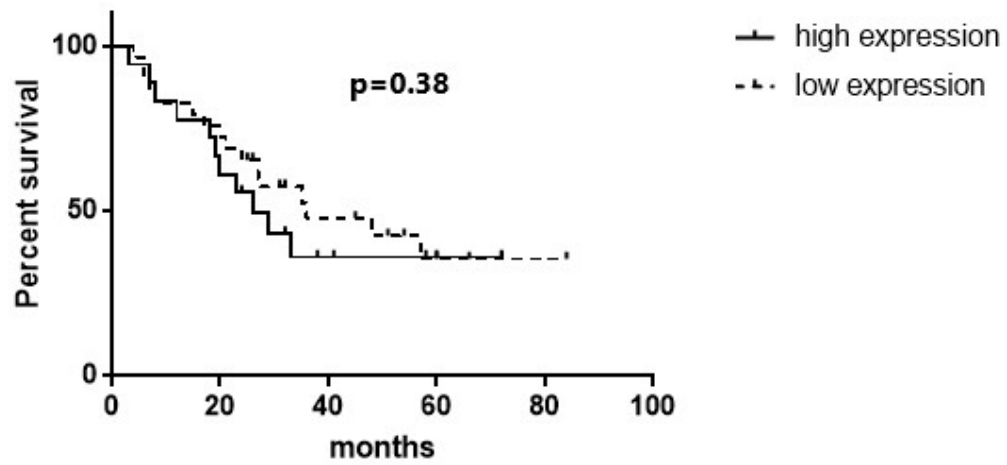
Supplementary Figure S10: Expression of PSMA3-AS1 in relation to grade. ns: not significant



Supplementary Figure S11: MALAT1, overall survival (continuous line: high-MALAT1 expression, intermittent line: low-MALAT1 expression).



Supplementary Figure S12: MiR-101, overall survival in negative lymph-node patients (continuous line: high-miR-101 expression, intermittent line: low-miR-101 expression).



Supplementary Figure S13: MANCR, disease-free survival (continuous line: high-MANCR expression, intermittent line: low-MANCR expression).

