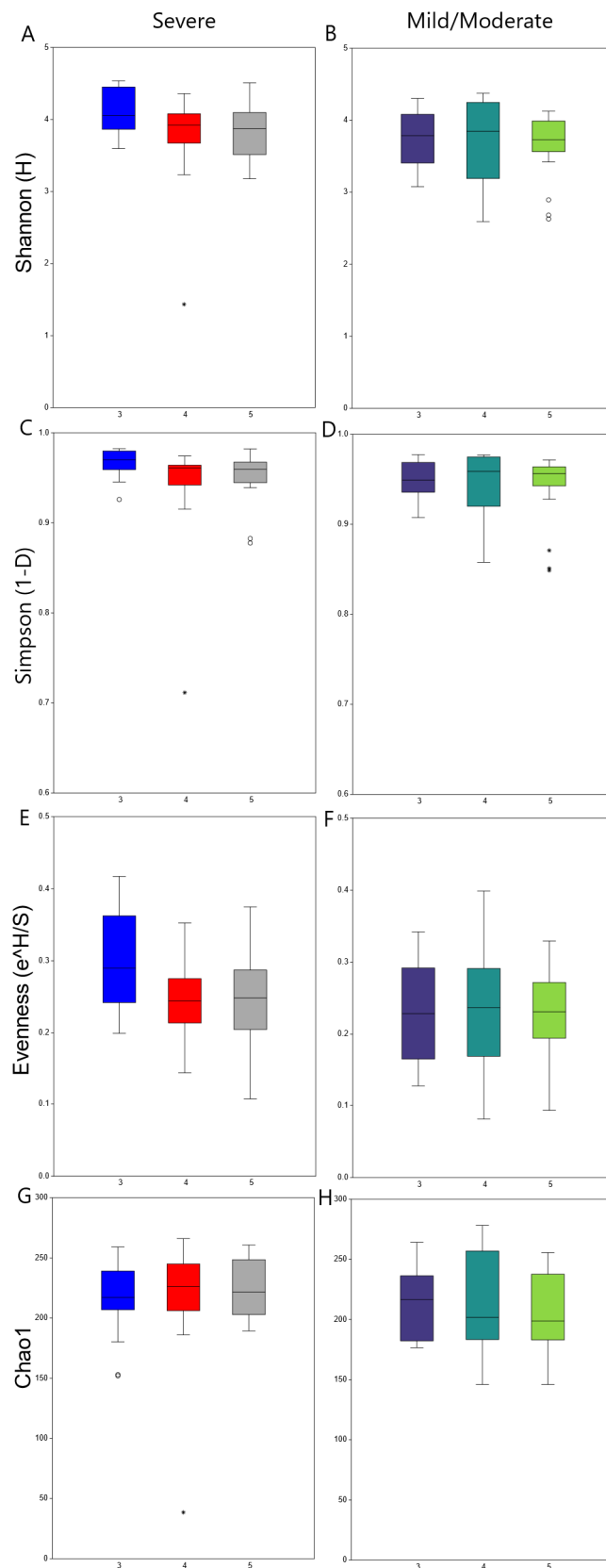
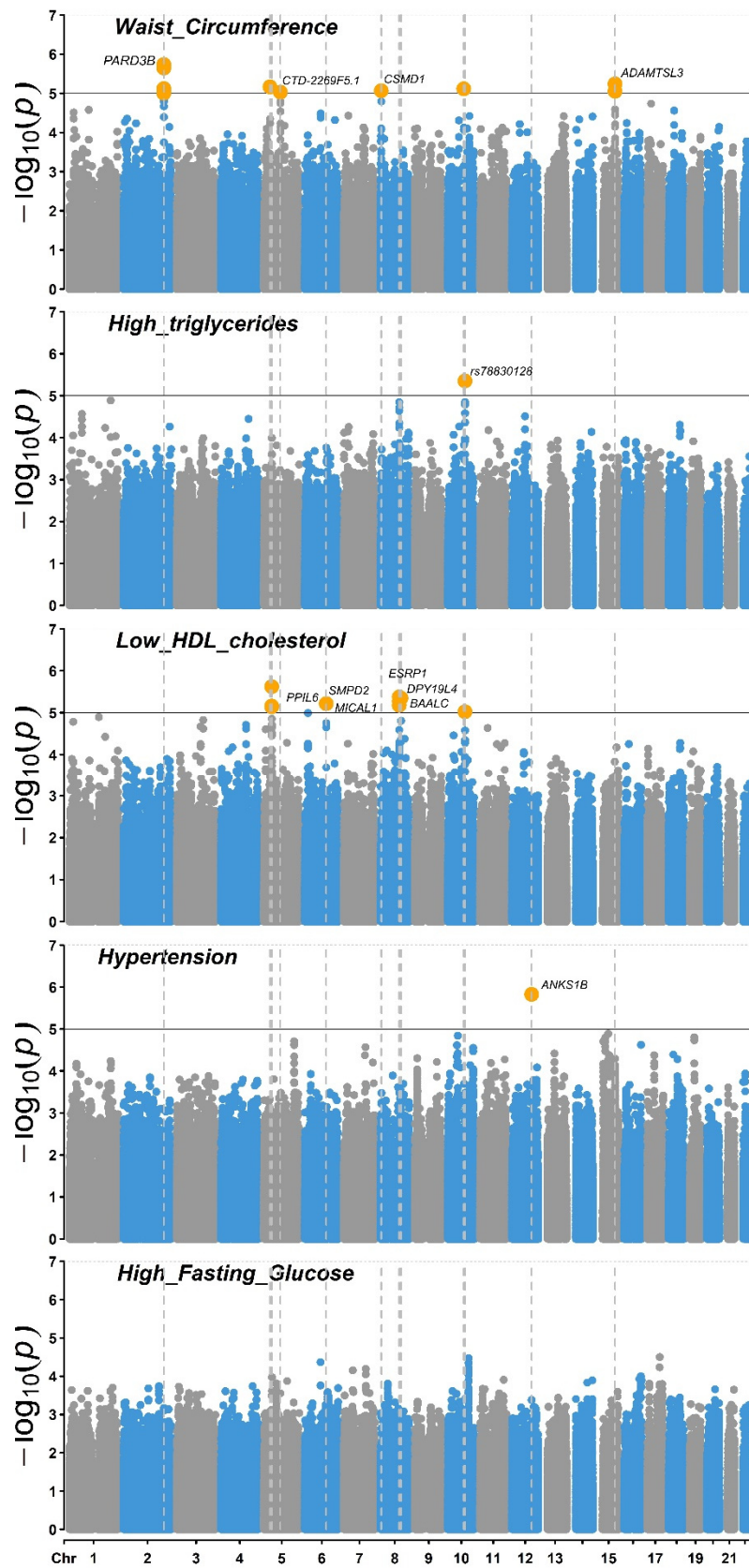


| Gene              | Start     | End       | Chr |
|-------------------|-----------|-----------|-----|
| VAMP3             | 7831356   | 7841492   | 1   |
| GLT6D1            | 138515494 | 138531386 | 9   |
| IL10              | 206940947 | 206945839 | 1   |
| IL1B              | 113587328 | 113594356 | 2   |
| IL6               | 22766819  | 22771617  | 7   |
| ANRIL<br>(CDKN2B) | 22002902  | 22009312  | 9   |
| NPY               | 24323809  | 24331481  | 7   |
| NCR2              | 41303346  | 41318627  | 6   |
| CAMTA1            | 6845514   | 7829766   | 1   |
| PLG               | 161123225 | 161175129 | 6   |
| PKN2              | 89149956  | 89301938  | 1   |
| KCNK1             | 233749852 | 233808260 | 1   |
| RUNX2             | 45296067  | 45518819  | 6   |
| TRPS1             | 116420724 | 116681202 | 8   |
| FBXO38            | 147763521 | 147822399 | 5   |
| UHRF2             | 6413199   | 6507054   | 9   |
| SIGLEC5           | 52114213  | 52133654  | 19  |
| MTND1P5           | 104097895 | 104098821 | 8   |
| VDR               | 48235320  | 48298777  | 12  |
| Fc-<br>gammaRIIA  | 161475247 | 161489619 | 1   |

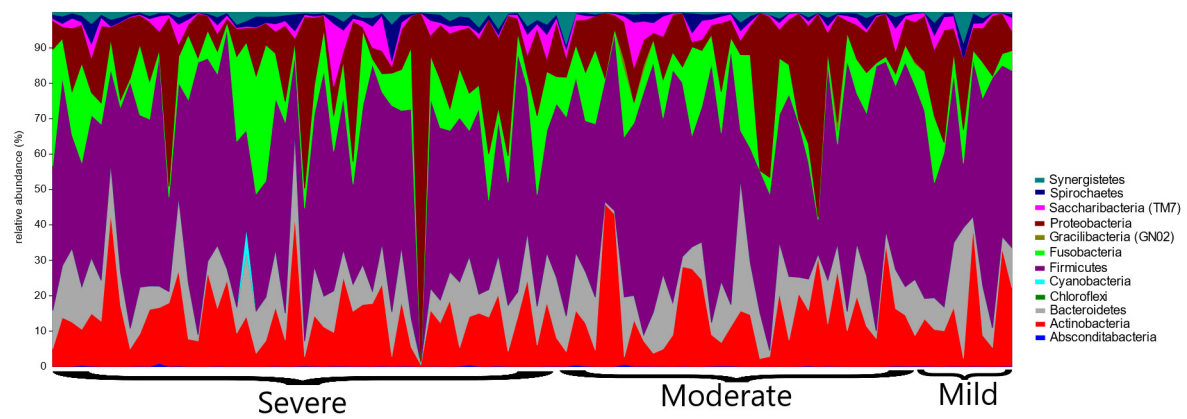
Supplement Table S1. Table listing gene panel and their corresponding HG19 co-ordinates used to extract SNPs from the genotyping raw data.



Supplement Figure S1. Box plots showing different alpha diversity metrics for patients that had 3,4 or 5 metabolic syndrome components. Majority of patients with 3 components had normal triglycerides and cholesterol levels.



Supplement Figure S2. Manhattan plots of gene variants against each component of the metabolic syndrome in the genome-wide analysis, after correcting for age, sex, smoking frequency, BMI and population structure. Variants at  $p < 10^{-5}$  are annotated and highlighted in orange.



Supplement Figure S3. Stacked chart of the observed phyla distributions for all patients in this study, with the periodontitis diagnosis indicated in the x-axis.