

Figure S1. Chromosome locations of *TaABCF* genes. Chromosomes are represented by cylinders. The red font represents the *ABCF1* group, the orange font represents the *ABCF2* group, the green font represents the *ABCF3* group, the blue font represents the *ABCF4* group.

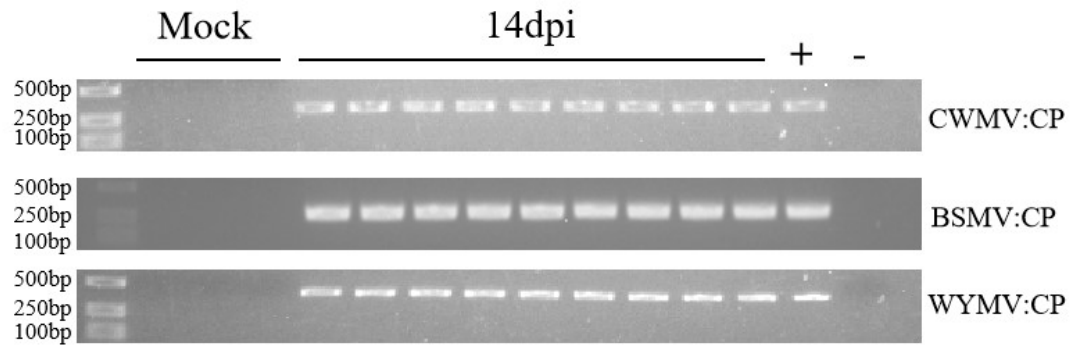


Figure S2. Reverse transcription PCR (RT-PCR) detection of BSMV, CWMV and WYMV infections. Three plants were analyzed for each treatment. Total RNA from health wheat plant was used as a negative control (-). Diluted plasmid BSMV- β , CWMV RNA 2, WYMV RNA 1 were used as the positive control (+) for BSMV, CWMV and WYMV, respectively.

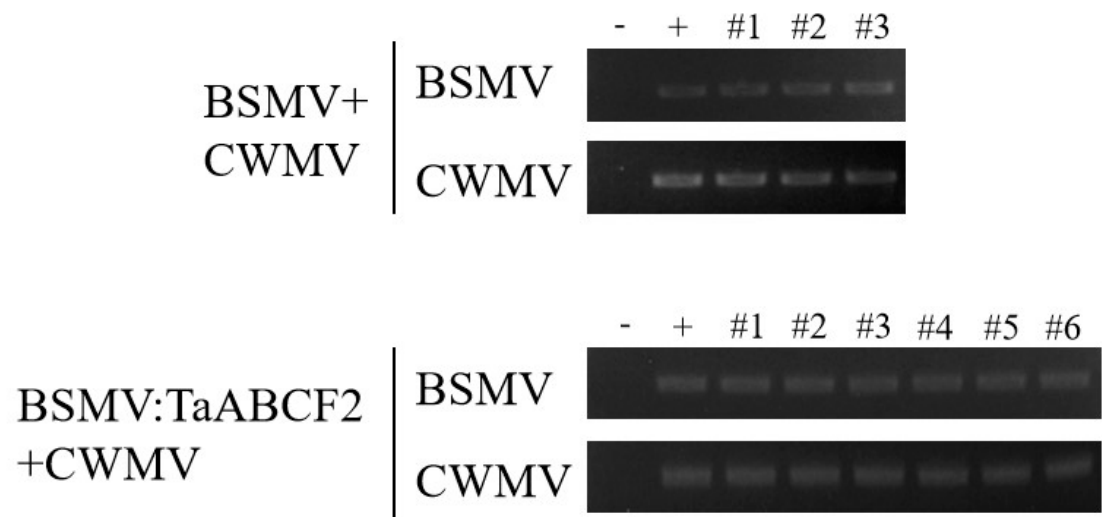


Figure S3. Detection of CWMV and BSMV by RT-PCR in virus infected leaves. The infectious clones and wheat leaves without viral infection was used as positive control (+) and negative control (-), respectively.

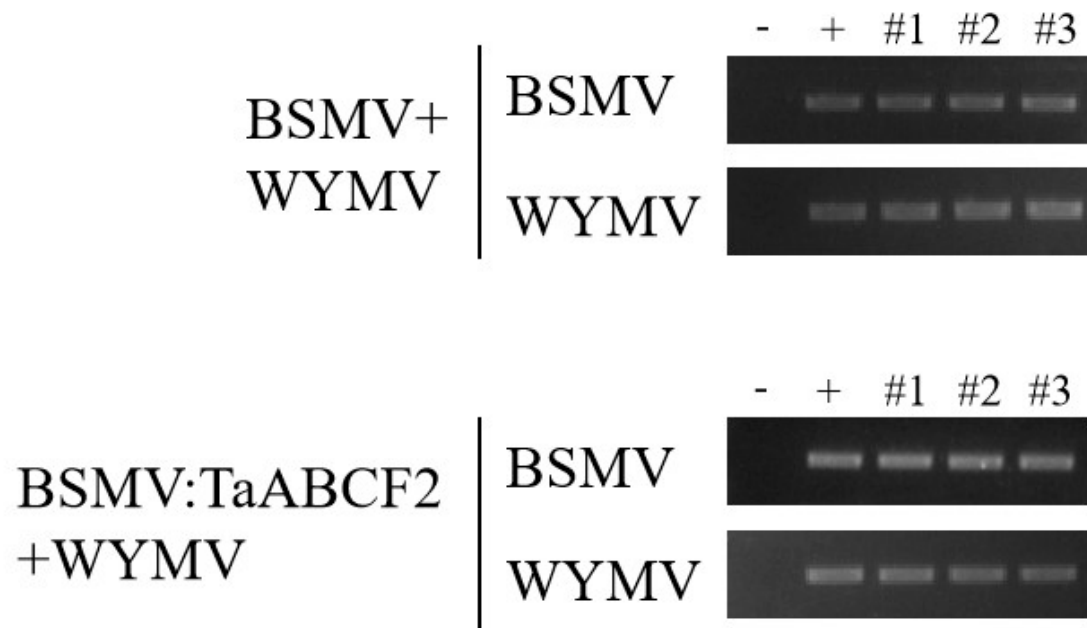


Figure S4. Detection of WYMV and BSMV by RT-PCR in virus infected leaves. The infectious clones and wheat leaves without viral infection was used as positive control (+) and negative control (-), respectively.