

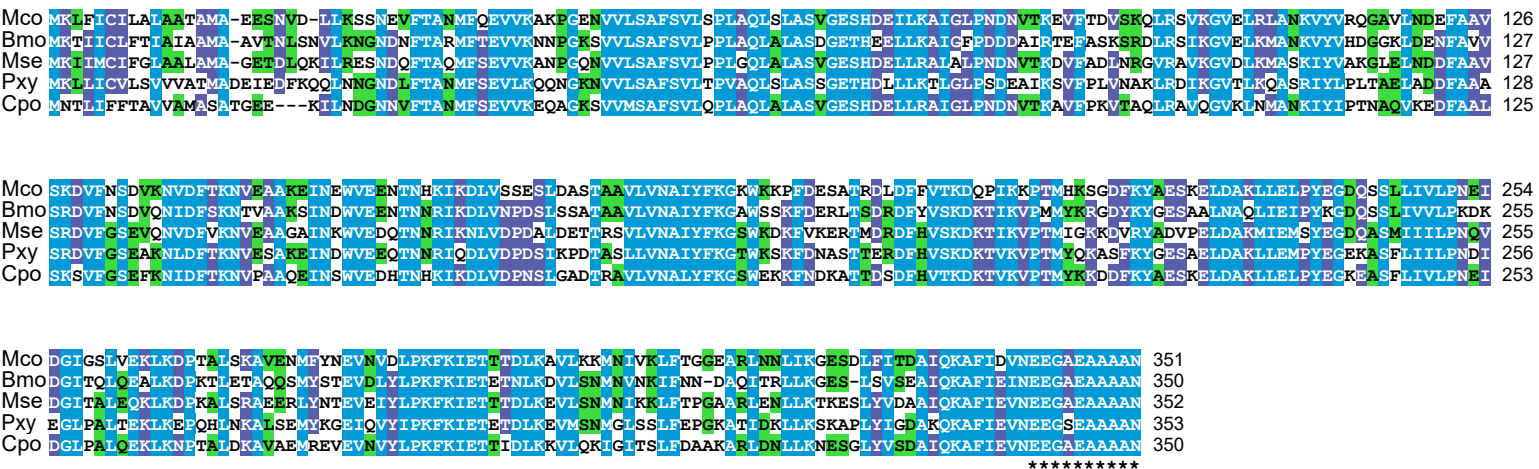
A**B**

Figure S3 Comparison of protein sequences encoded by *serpin1* in several lepidopteran insects. **(A)** Sequence alignment of conserved region of serpin1 proteins in *Mamestra configurata*, *Bombyx mori*, *Manduca sexta*, *Plutella xylostella*, and *Cydia pomonella*. The hinge region preceding the reactive center loop (RCL) showed almost identical residues (in blue background) and similar residues (in green or purple background) were also indicated. **(B)** Alignment of *C. pomonella* serpin1 carboxyl-terminal inhibitor domain variants following the hinge region with the RCL and P1 positions are highlighted in red.