

SUPPLEMENTARY FILE

Figure S1. The chromatogram of magnoflorine isolated from *Berberis vulgaris* root

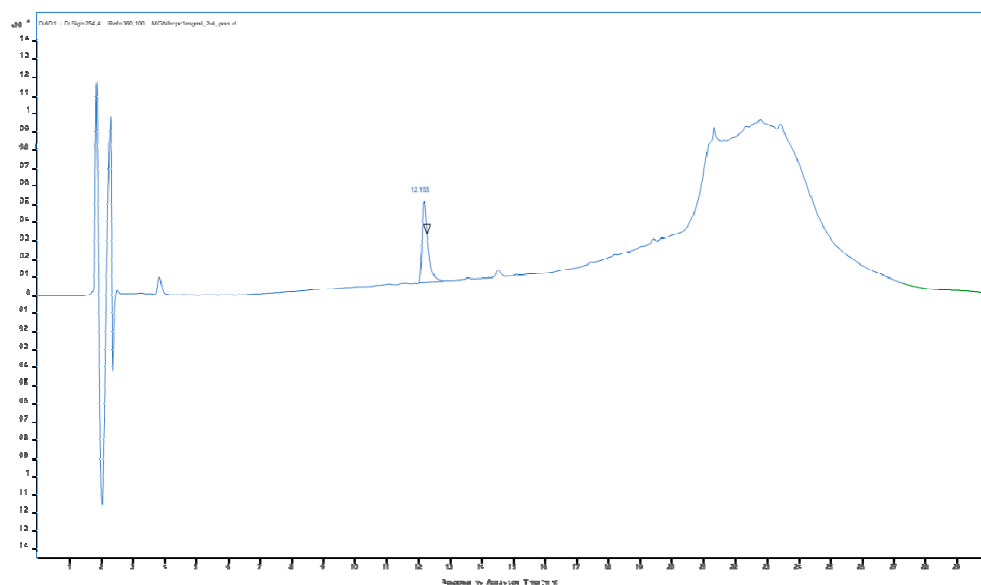


Figure S2. The MS/MS chromatogram showing the fragmentation of the isolated magnoflorine

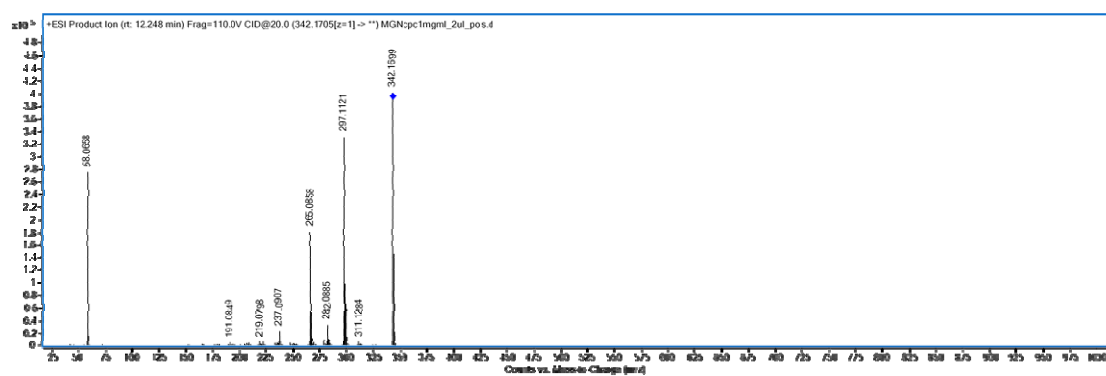


Figure S3. Chromatogram registered by the CPC instrument with the peak of magnoflorine eluted after 63 min

