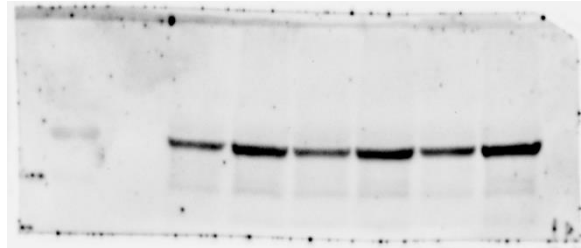
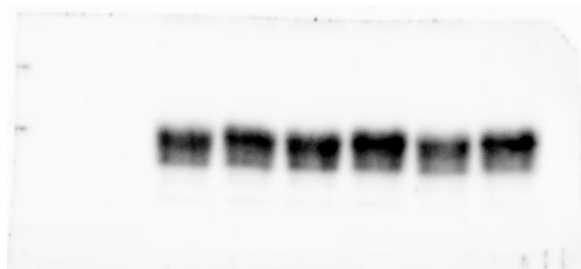


Supplementary Figure S1. Raw Western blot images showing changes in abundances of selected cauda epididymal fluid proteins of dogs (*Canis lupus familiaris*) divided into two groups according to epididymal sperm progressive motility: good sperm motility (GSM) and poor sperm motility (PSM). ALB—Albumin (**A**), PTGDS—Prostaglandin-H2 D-isomerase (**B**), CRISP2—Cysteine-rich secretory protein 2 (**C**), ACTB—Actin, cytoplasmic 1 (**D**).

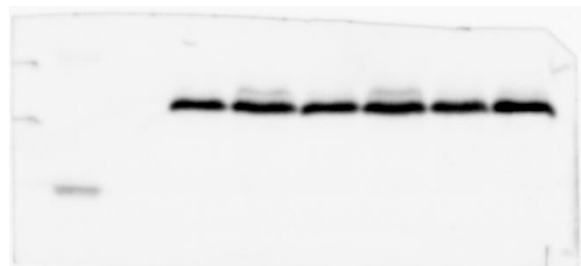
(A) ALB



(B) PTGDS



(C) CRISP2



(D) ACTB

