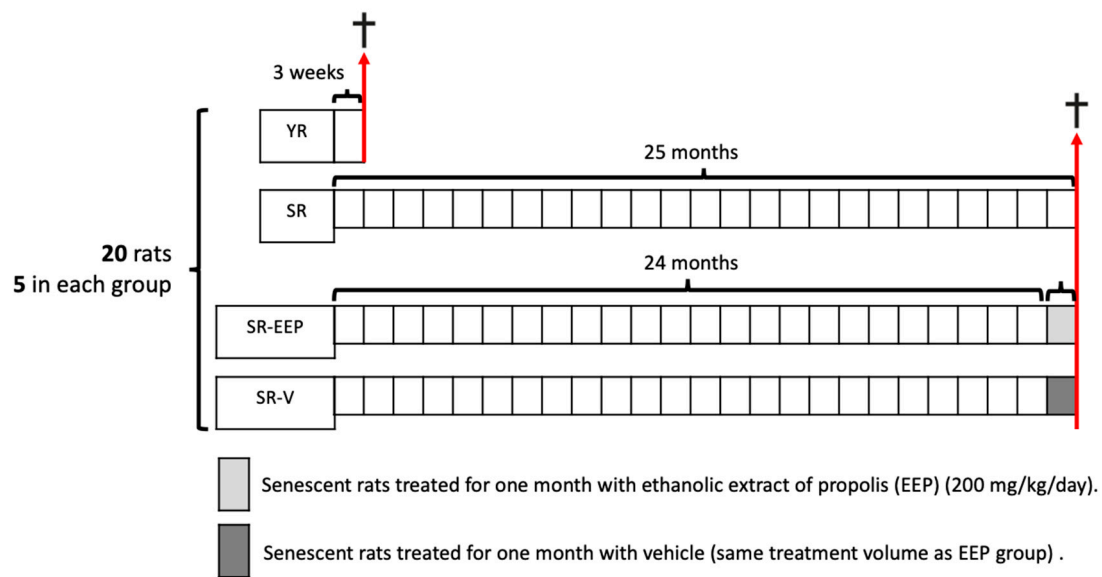


Supplementary Materials



Figures S1. Experimental procedure of the study. Twenty male Sprague–Dawley rats were housed in a temperature-controlled environment with 12 h light/dark cycles, where they received food and water *ad libitum*. The animals were randomly separated into four groups of five individuals per group: YR (control group of young rats, 3 weeks old), SR (group of 25-month-old senescent rats), SR-EEP (group of 24-month-old senescent rats treated with ethanolic extract of propolis, EEP, at 200 mg/kg/day), and SR-V (group of 24-month-old senescent rats administered only the vehicle, same volume of EEP according to weight).