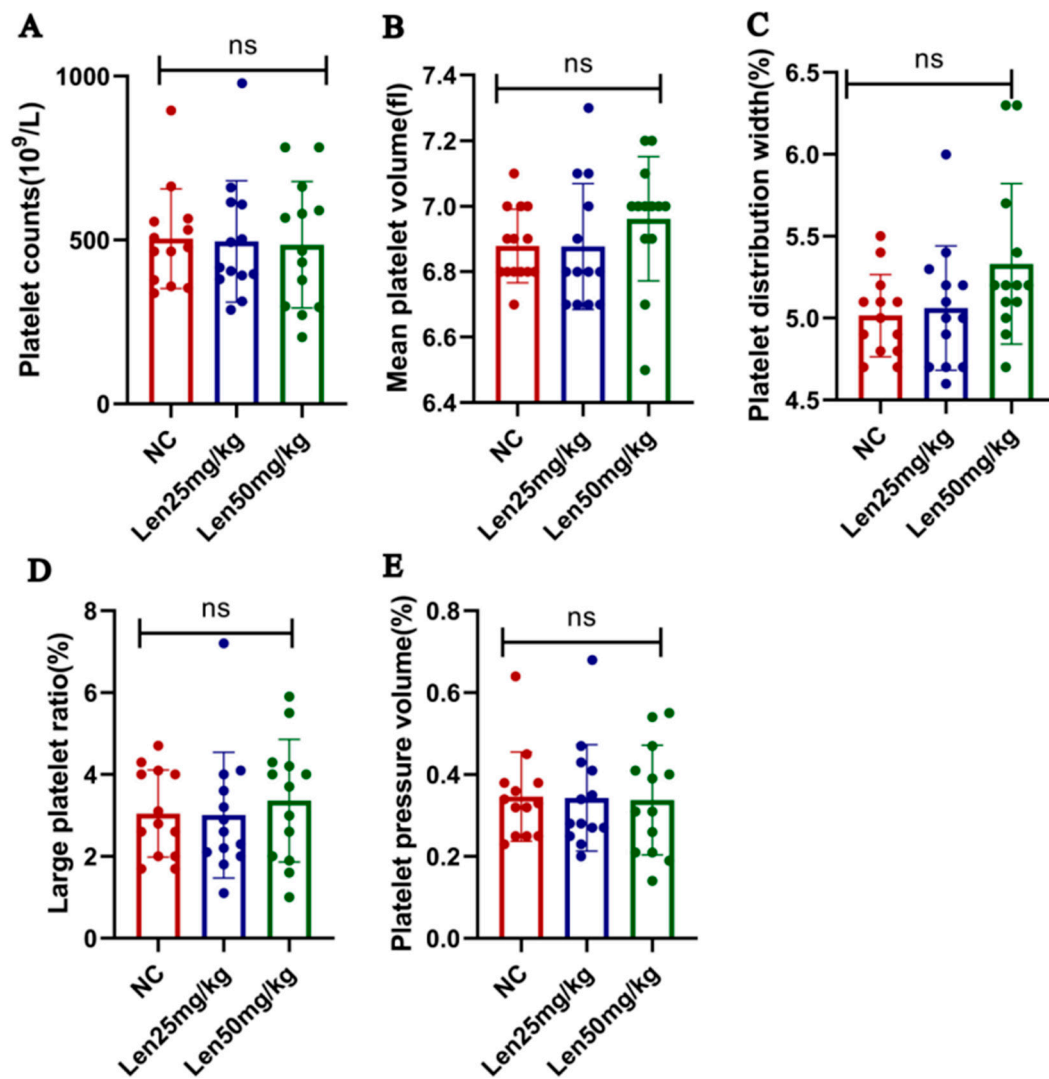
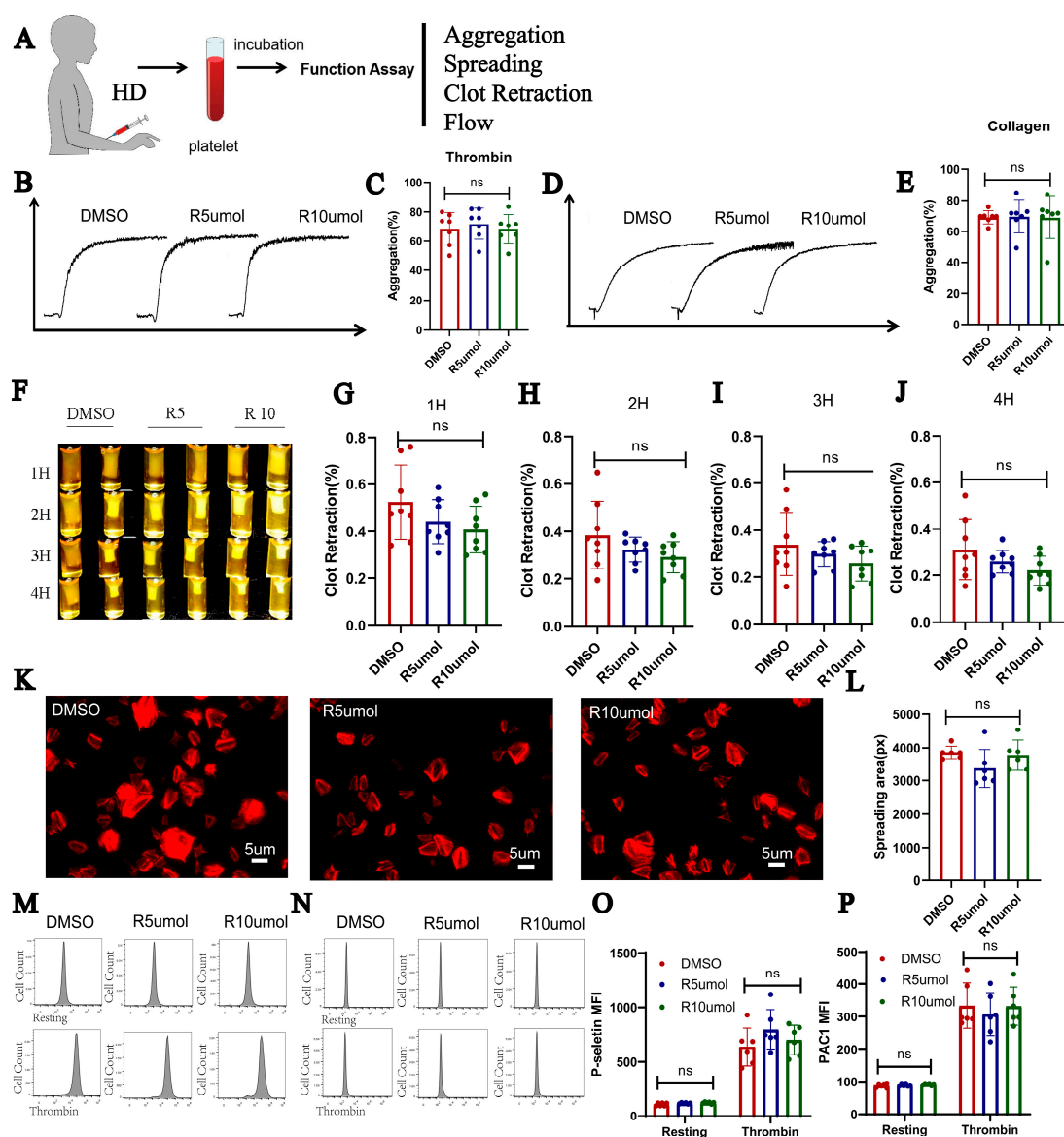


Supplementary Figure S1



**Figure S1.** Changes in platelet related parameters in mice after taking lenalidomide. (A) platelet counts (n=13, ns); (B) mean platelet volume (n=13, ns); (C) platelet distribution width (n=13ns); (D) Large platelet ratio (n=13, ns); (E) plateletocrit (n=13, ns).

## Supplementary Figure S2



**Figure S2.** Lenalidomide did not affect platelet activity in healthy donors in vitro. (A) Design of experiment. (B) Platelet aggregation curves stimulated with thrombin (0.03 U/mL). (C) Maximum platelet aggregation of platelets after stimulation with thrombin. (D-E) Platelet aggregation stimulated with collagen (2 µg/mL). (F-J) results of clot retraction. (K-L) Spreading of the platelets incubated with DMSO and lenalidomide. (M-N) Exposure of P-selectin and PAC1 tested by flow cytometry.