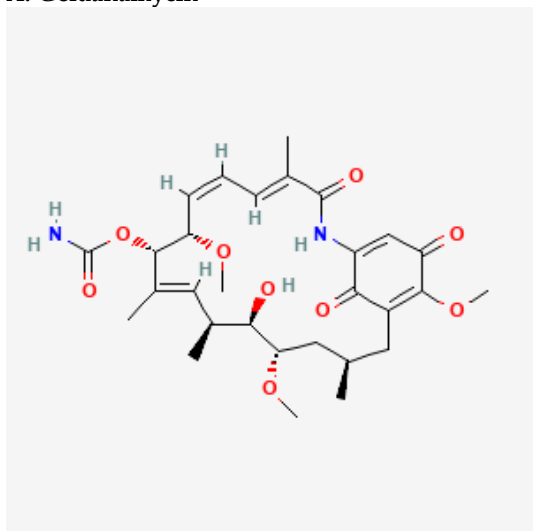


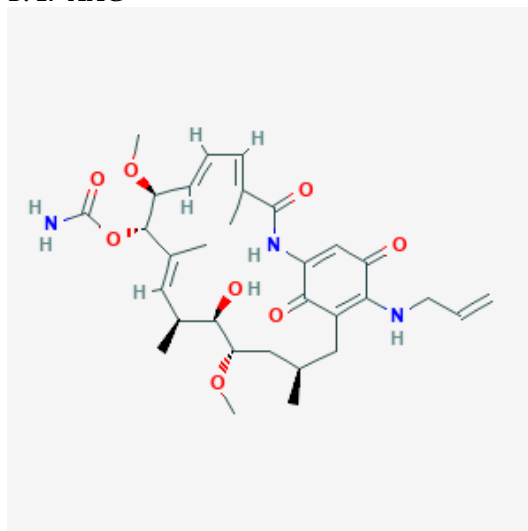
Figure S1. Molecular structure, source, molecular formula, and molecular weight of the discussed small molecules.

A. Geldanamycin



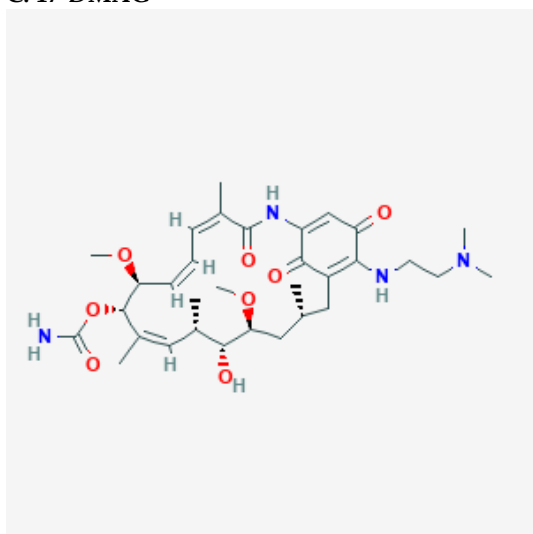
PubChem CID: 5288382
Source: Bacteria (*S. hygroscopicus*)
Molecular Formula: $C_{29}H_{40}N_2O_9$
Molecular Weight: 560.6 g/mol

B. 17-AAG



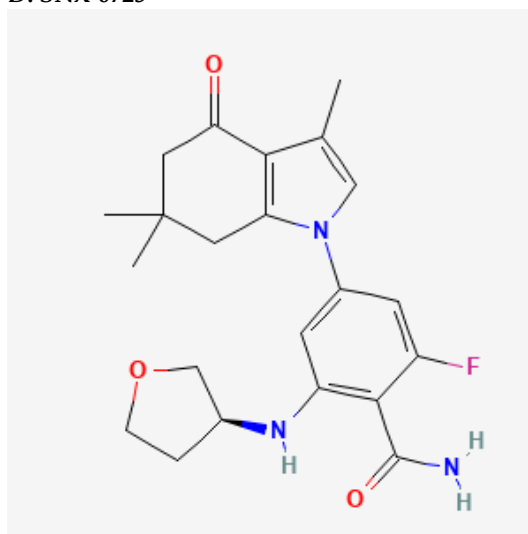
PubChem CID: 6440175
Source: Semi-synthetic derivative of GA
Molecular Formula: $C_{31}H_{43}N_3O_8$
Molecular Weight: 585.7 g/mol

C. 17-DMAG



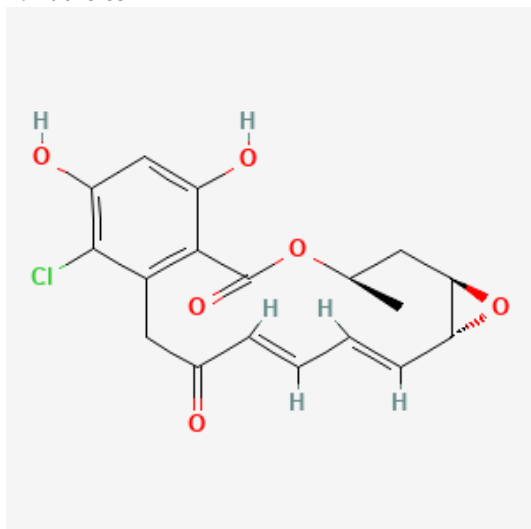
PubChem CID 9852573
Source: Semi-synthetic derivative of GA
Molecular Formula: $C_{32}H_{49}ClN_4O_8$
Molecular Weight: 653.2 g/mol

D. SNX-0723



PubChem CID 67495834
Source: Synthetic
Molecular Formula: $C_{22}H_{26}FN_3O_3$
Molecular Weight: 399.5 g/mol

E. Radicicol



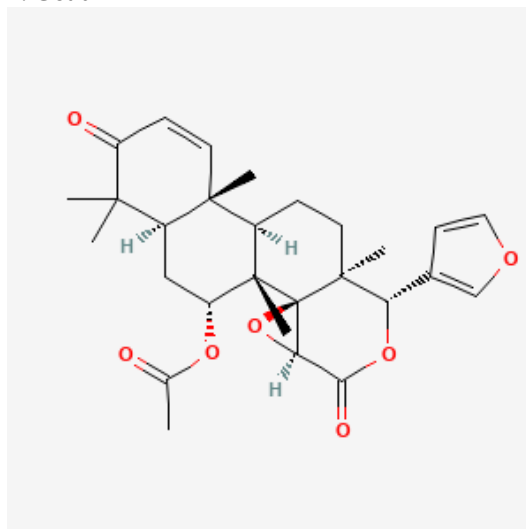
PubChem CID: 6323491

Source: *N. quadrisepata*, *H. fuscoatra*, *M. bonorden* and other fungi

Molecular Formula: $C_{18}H_{17}ClO_6$

Molecular Weight: 364.8 g/mol

F. Gedunin



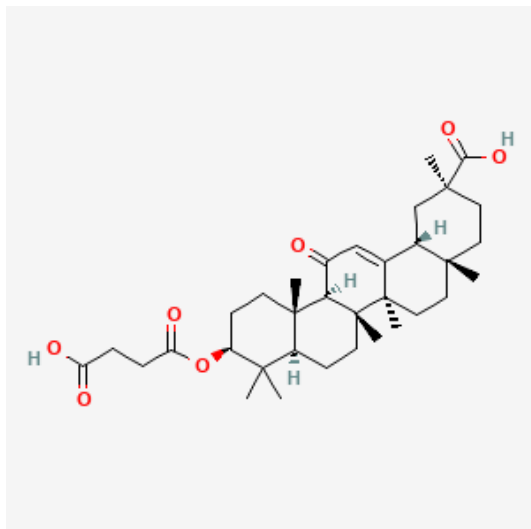
PubChem CID: 12004512

Source: *A. indica*, *C. odorata*

Molecular Formula: $C_{28}H_{34}O_7$

Molecular Weight: 482.6 g/mol

G. Carbenoxolone



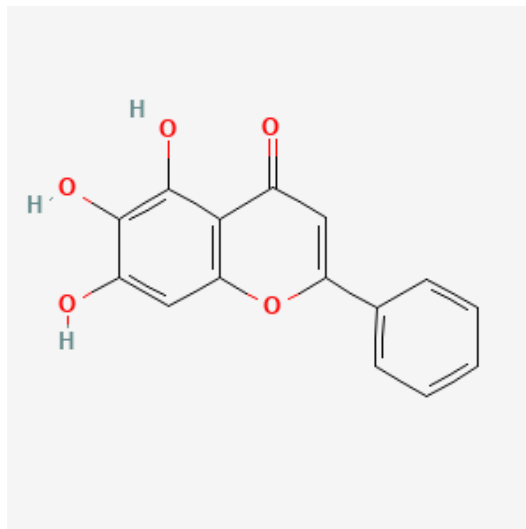
PubChem CID: 636403

Source: Synthetic

Molecular Formula: $C_{34}H_{50}O_7$

Molecular Weight: 570.8 g/mol

H. Baicalein

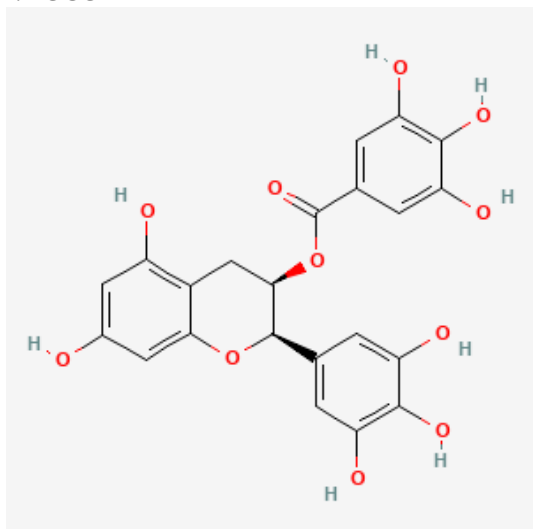


PubChem CID: 5281605

Source: *Scutellaria baicalensis* (Plant)

Molecular Formula: $C_{15}H_{10}O_5$

Molecular Weight: 270.24 g/mol

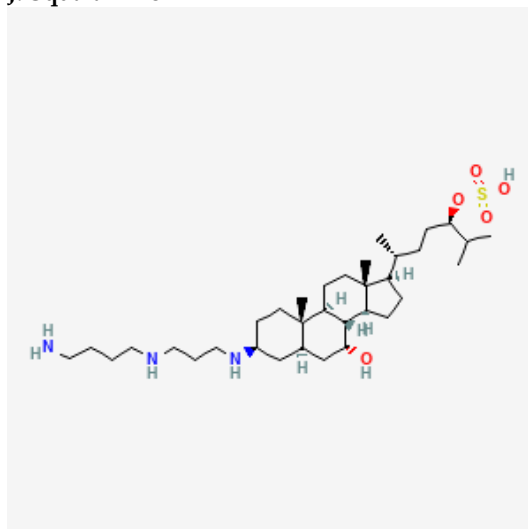
I. EGCG

PubChem CID: 65064

Source: Green Tea

Molecular Formula: $C_{22}H_{18}O_{11}$

Molecular Weight: 458.4 g/mol

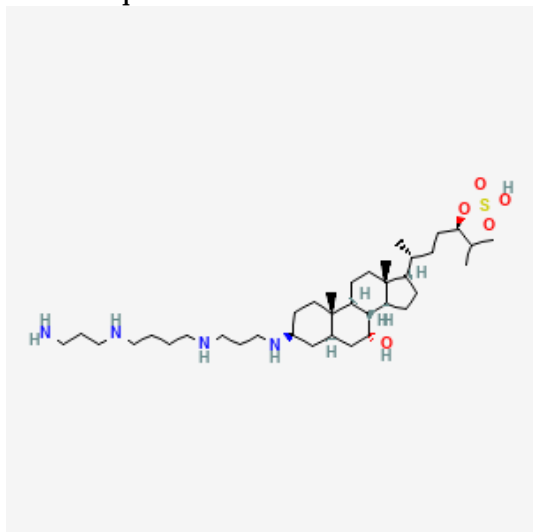
J. Squalamine

PubChem CID 72495

Source: *Squalus acanthias*

Molecular Formula: $C_{34}H_{65}N_3O_5S$

Molecular Weight: 628 g/mol

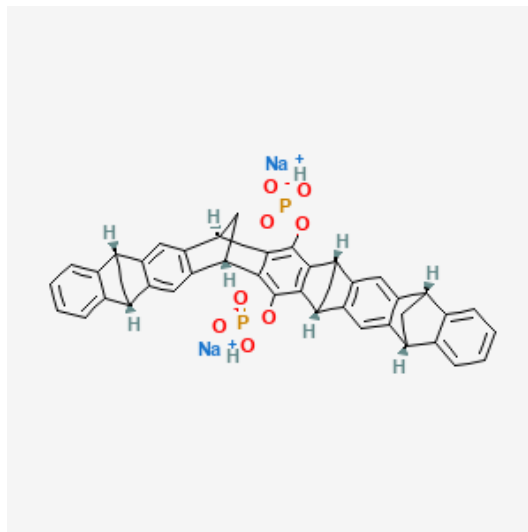
K. Trodusquemine

PubChem CID: 9917968

Source: *Squalus acanthias*

Molecular Formula: $C_{37}H_{72}N_4O_5S$

Molecular Weight: 685.1 g/mol

L. CLR01

PubChem CID: 54758480

Source: Synthetic

Molecular Formula: $C_{42}H_{30}Na_2O_8P_2$

Molecular Weight: 770.6 g/mol

All the chemical structures, molecular formula, and molecular weight were adapted from Pubchem, National Library of Medicine (<https://www.ncbi.nlm.nih.gov/>). 17-AAG: 17-(Allylamino)-17-demethoxygeldanamycin; 17-DMAG: 17-dimethylaminoethylamino-17-demethoxy-geldanamycin; EGCG: Epigallocatechin-3-gallate.