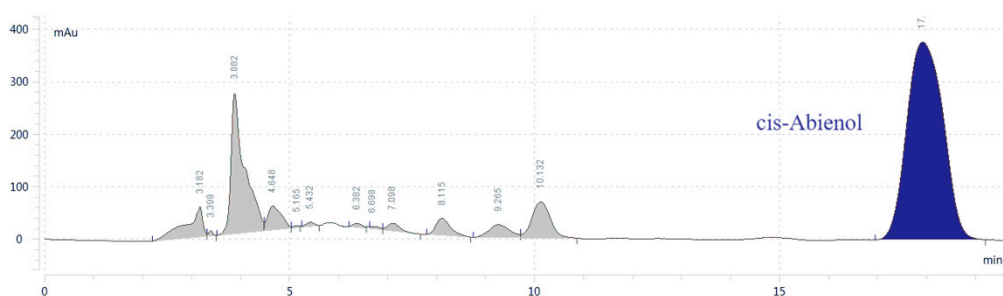
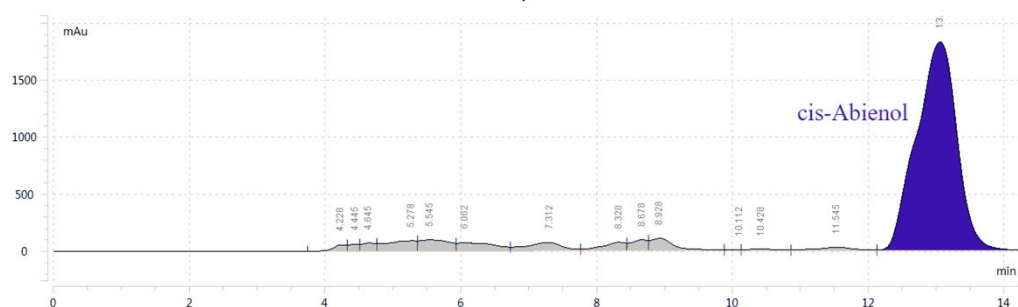


Tobacco extract
 ↓
 Dissolved in 95% ethanol
 ↓
 Reverse medium pressure preparation apparatus (90% Methanol: 10% H₂O)



↓
 Reverse medium pressure preparation apparatus (90% Acetonitrile: 10% H₂O)
 ↓



↓
 Super High-performance liquid chromatography
 ↓

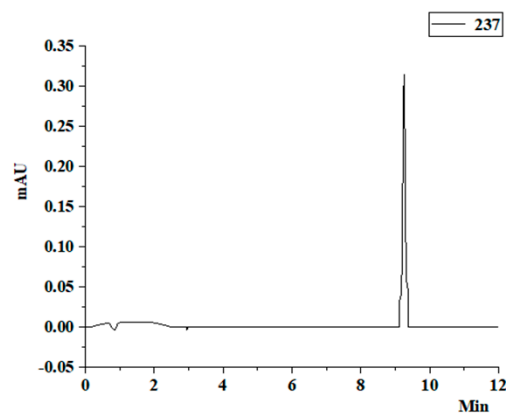


Figure S1. Extraction and purification of cis-abienol.