

Supplementary Materials

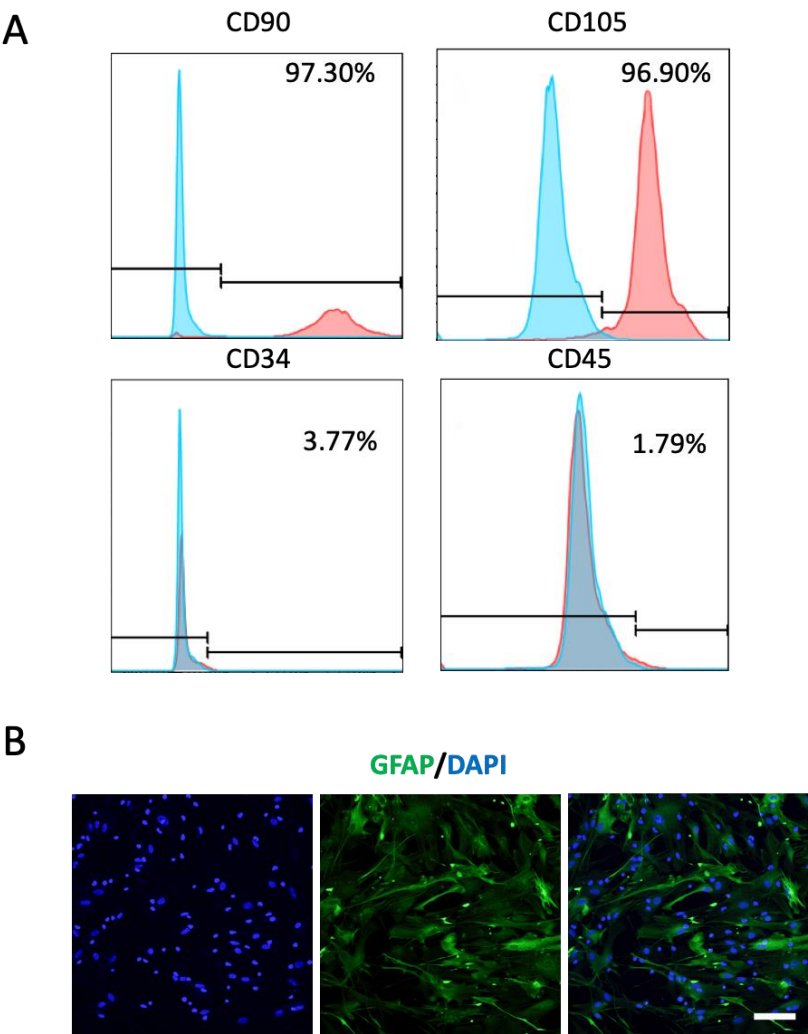


Figure S1. Characterization of primary cultured MSCs and rat midbrain AS. (A) MSCs were stained with surface markers CD90, CD105, CD34, and CD45 and subjected to flow cytometry analysis. ~97% of cells are immunoreactive to mesenchymal stem cell markers CD90 and CD105 and negative for hematopoietic markers CD34 and CD45. (B) Immunostaining analysis showed that nearly 95% of cells in the primary astrocytic culture were immunopositive for astrocytic marker GFAP. Scale bars: 100 μ m.

Table S1. The specific primer sequences (5'–3')

Genes	Forward primer	Reverse primer
Human		
<i>gpadh</i>	GGAGCGAGATCCCTCCAAAAT	GGCTGTTGTCAT- ACTTCTCATGG
<i>nt-4</i>	CTGTGTGCGATGCAGTCAGT	TGCAGCGGGTTTCAAAGAAGT
<i>bdnf</i>	GGCTTGACATCATTGGCTGAC	CATTGGGCCGAACTTTCTGGT
<i>gdnf</i>	GGCAGTGCTTCCTAGAAGAGA	AAGACACAACCCCGGTTTTTG
<i>lmx1a</i>	GCAAAGGGGACTATGAGAAGGA	CGTTTGGGGCGCTTATGGT
<i>wnt1</i>	CGATGGTGGGGTATTGTGAAC	CCGGATTTTGGCGTATCAGAC
<i>en1</i>	TTCCAGGCAAACCGCTACATC	ACTCGCTCTCGTCTTTGTCCT
<i>corin</i>	CCAAAGCCGGTCTTGAGAG	GAGGAGGTTAGCAGTCGCC
<i>mash1</i>	CCAAGCAAGTCAAGCGACAG	TAGCCAAAGCCGCTGAAGTT
<i>ptbp1</i>	CTCACCAGCCTCAACGTCAA	TTATACCAGGTGCACCGAAGG

<i>pitx3</i>	CAGAGGACGGTTCGCTGAAAA	AGCTGCCTTTGCATAGCTCG
<i>nurr1</i>	ACCACTCTTCGGGAGAATACA	GGCATTGTGTACAAGCAAGGT
Rat		
<i>β-actin</i>	ATGGATGACGATATCGCTGCG	GTAGGAGTCCTTCTGACCCAT
<i>apaf-1</i>	ACTTGTCGGCCCTGCGCATC	GGGGCGAACGACTAAGCGGG
<i>bax</i>	TTGCTACAGGGTTTCATCC	GTCCAGTTCATCGCCAAT
<i>bcl-2</i>	GTCATAACTAAAGACACCCC	TTCATCTCCAGTATCCCCTC
<i>caspase3</i>	CGGAGCTTGGAACGCGA	ACACAAGCCCATTTCAGGGTA
<i>p53</i>	GTCGGCTCCGACTATACCACTATC	CTCTCTTTGCACTCCCTGGGGG
