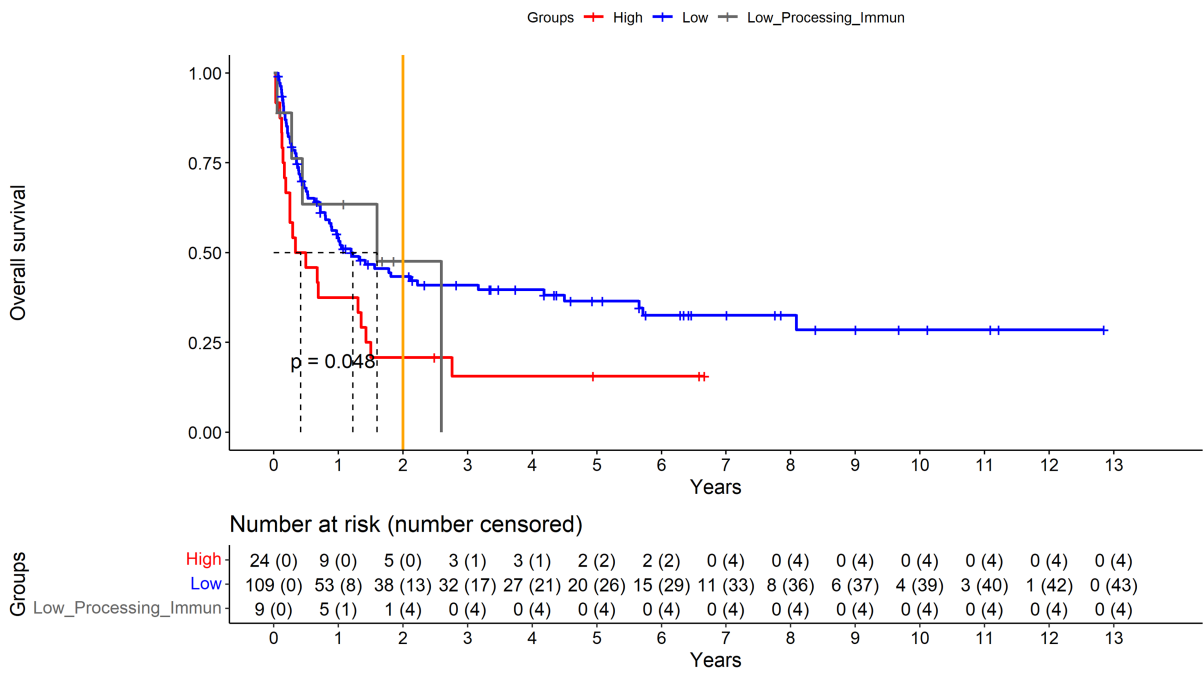


Supplementary Figure S3. Patients who have received ICI show better overall survival when no or few processing mutations are present compared to patients who have many processing mutations ($p < 0.05$). Though, these results should be interpreted with caution, as of the 10 patients treated with ICI, only four patients received monotherapies with pembrolizumab. **3A.** Entire cohort, stage I-IV. **3B.** Advanced stages IIIB-IV only.

S3A.



S3B.

