

Supplementary Figures

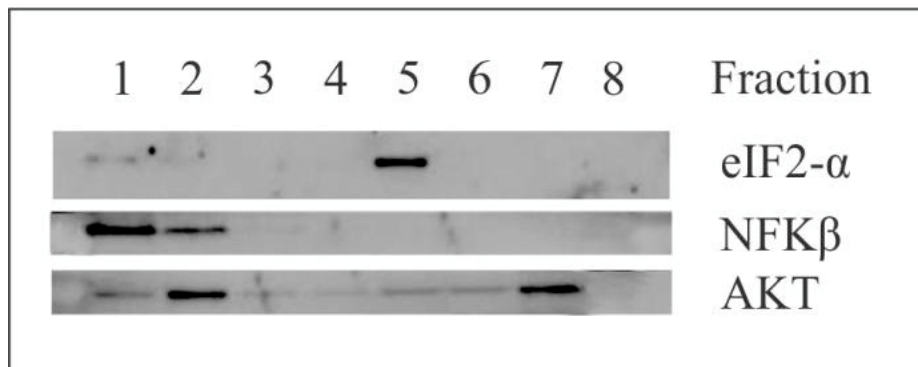


Figure S1: Western blot analysis of subcellular proteins to verify the purity of isolated ER. Subcellular fractionation of JHF1 infected and control Huh-7 cells was performed by discontinuous sucrose gradient centrifugation. Protein (20 μ g) from each fraction was separated by 10% SDS PAGE and transferred onto PVDF membranes. Blotted proteins were probed for markers of ER (eIF2- α), nucleus (NF- κ B) and cytosol (AKT).