

SUPPLEMENTARY INFORMATION

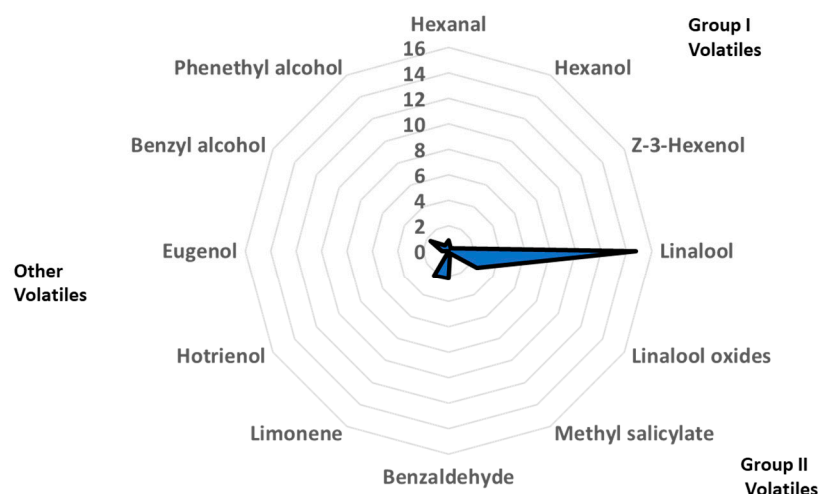


Figure S1. Volatile composition (relative proportion, %) of Complex Tea Extract analyzed by gas chromatography.

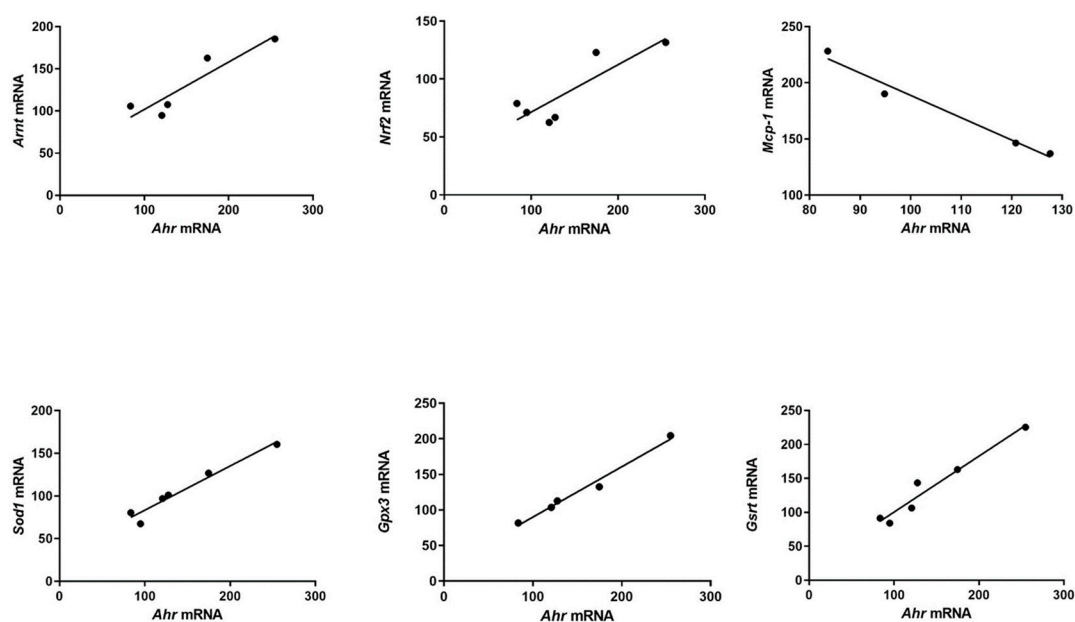


Figure S2. Correlation between AhR gene expression and antioxidants, pro-inflammatory and AHR-pathway genes in gastrocnemius tissue in mice supplemented with green-black tea extract. Values are represented as mean \pm SEM; n=6-8 mice/group.