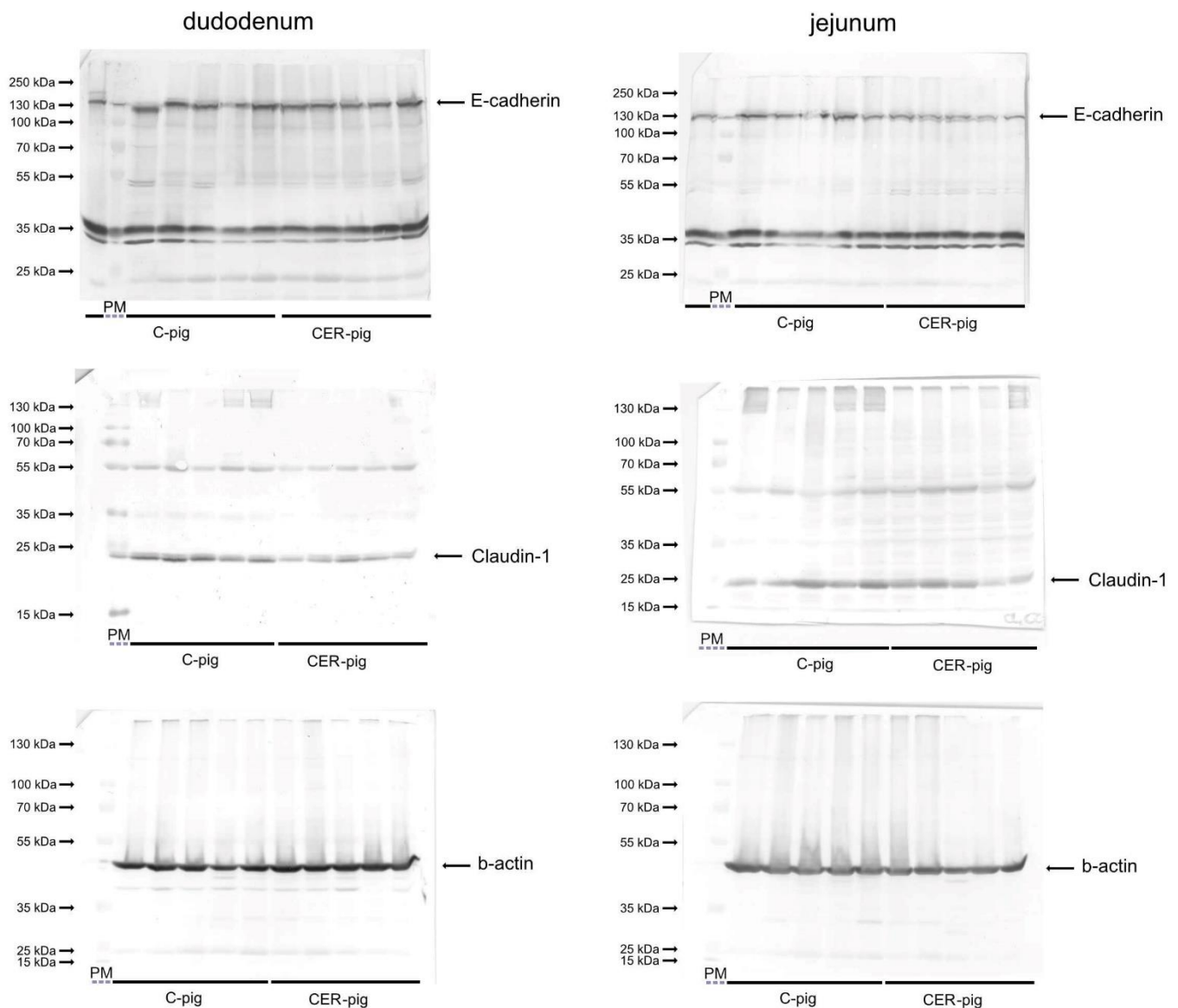


Repetitive Cerulein-Induced Chronic Pancreatitis in Growing Pigs – A Pilot Study

Ewa Tomaszewska, Małgorzata Świątkiewicz, Siemowit Muszyński, Janine Donaldson, Katarzyna Ropka-Molik, Marcin B. Arciszewski, Maciej Murawski, Tomasz Schwarz, Piotr Dobrowolski, Sylwia Szymańczyk, Sławomir Dresler, Joanna Bonior



Supplementary Figure S1. Uncropped original Western blot membranes of E-Cadherin and Claudin-1 and b-actin as loading control (corresponding to Figure 7b and 7e in the main article).