

## SUPPLEMENTARY INFORMATION

### **KDM5D Histone Demethylase Identifies Platinum-Tolerant Head and Neck Cancer Cells Vulnerable to Mitotic Catastrophe**

Tsung-Ming Chen<sup>1,2</sup>, Chih-Ming Huang<sup>3,4</sup>, Syahrul Agung Setiawan<sup>5,6</sup>, Ming-Shou Hsieh<sup>7,8,9</sup>, Chih-Chi Sheen<sup>7,8,9\*</sup>, Chi-Tai Yeh<sup>6,10\*</sup>

<sup>1</sup> Department of Otolaryngology, School of Medicine, College of Medicine, Taipei Medical University, Taipei City 11031, Taiwan

<sup>2</sup> Department of Otolaryngology-Head and Neck Surgery, Shuang Ho Hospital, Taipei Medical University, New Taipei City 23561, Taiwan

<sup>3</sup> Department of Otolaryngology, Taitung Mackay Memorial Hospital, Taitung City 950408, Taiwan

<sup>4</sup> Department of Nursing, Tajen University, Yanpu 90741, Pingtung County, Taiwan

<sup>5</sup> International Ph.D. Program in Medicine, College of Medicine, Taipei Medical University, Taipei City 11031, Taiwan

<sup>6</sup> Department of Medical Research & Education, Taipei Medical University-Shuang Ho Hospital, New Taipei City 23561, Taiwan

<sup>7</sup> School of Dentistry, College of Oral Medicine, Taipei Medical University, Taipei City, 110, Taiwan.

<sup>8</sup> Department of Dentistry, Taipei Medical University-Shuang Ho Hospital, New Taipei City, 235, Taiwan.

<sup>9</sup> Department of Periodontics, Shuang Ho Hospital, Taipei Medical University, New Taipei City 23561, Taiwan.

<sup>10</sup> Continuing Education Program of Food Biotechnology Applications, College of Science and Engineering, National Taitung University, Taitung 95092, Taiwan.

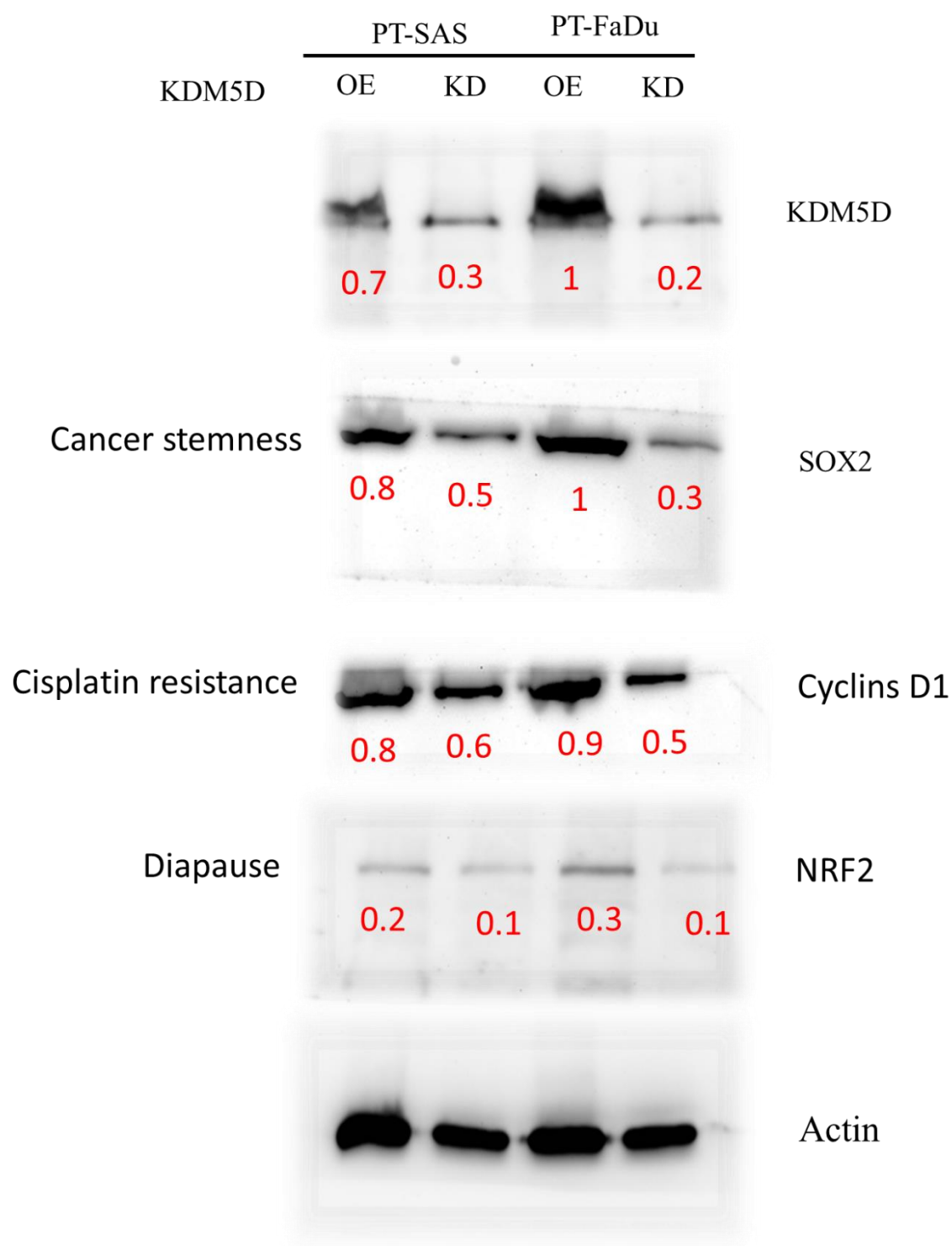
\*Authors to whom correspondence should be addressed.

Chi-Tai Yeh, PhD

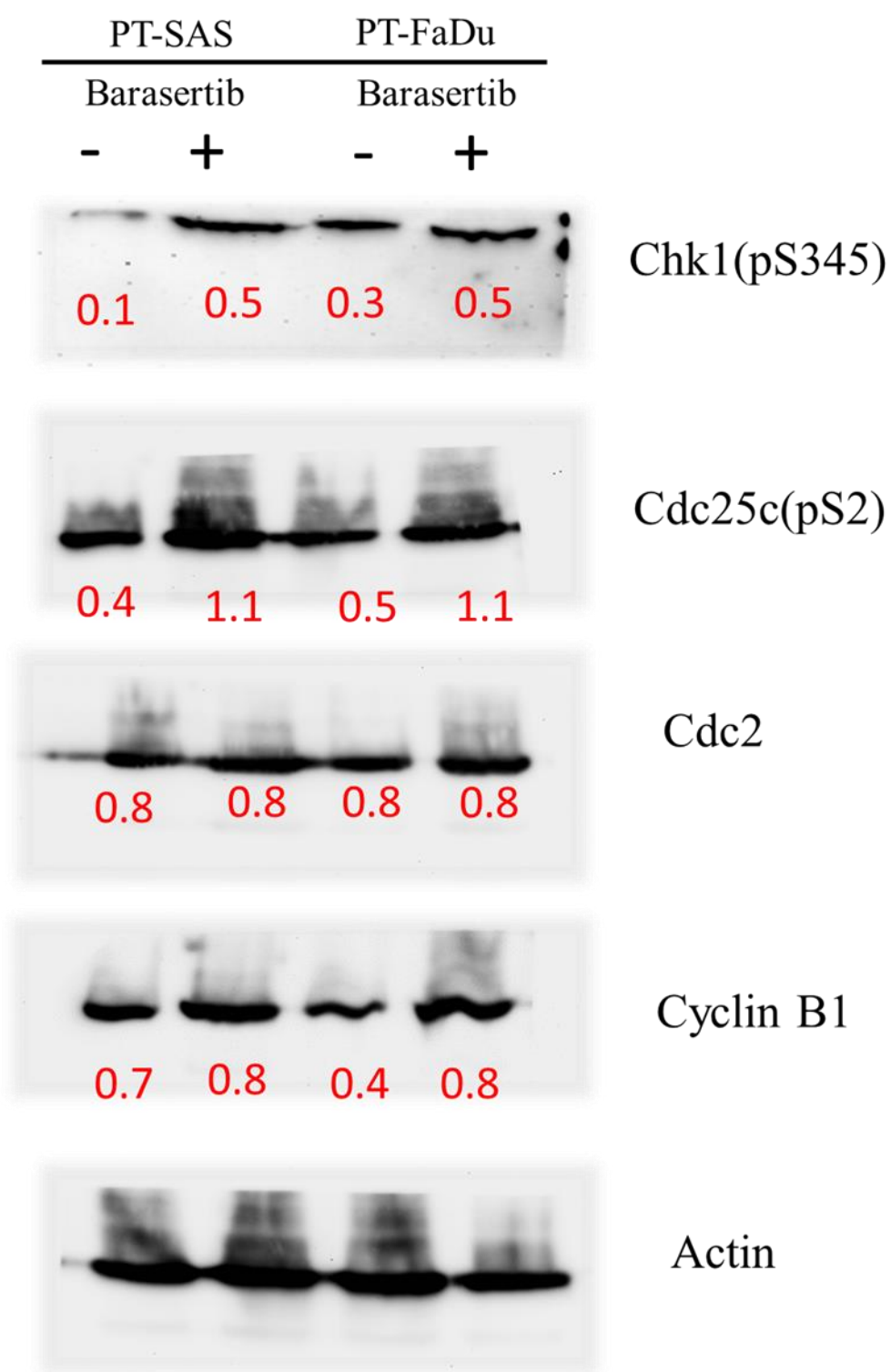
Department of Medical Research and Education, Taipei Medical University - Shuang Ho Hospital, New Taipei City 23561, Taiwan. Tel: +886-2-2490088 ext. 8881, Fax: +886-2-2248-0900. E-mail: [ctyeh@s.tmu.edu.tw](mailto:ctyeh@s.tmu.edu.tw)

Chih-Chi Sheen, MD

Department of Periodontics, Shuang Ho Hospital, Taipei Medical University, New Taipei City 23561, Taiwan. Tel: +886-2-2490088 ext. 8885, Fax: +886-2-2248-0900. E-mail: [15484@s.tmu.edu.tw](mailto:15484@s.tmu.edu.tw)



**Supplementary Figure S1** KDMD5 and AURKB overexpression/knockdown with an established positive marker for cancer stemness (SOX2), cisplatin resistance (Cyclins D1) and diapause (NRF2)



Supplementary Figure S2. Full-size blots of Figure 6D