

Figure S1. Genes obtained through both the ChIP-on-ChIP and microarray datasets were mapped to a protein interaction network with the central points set to *TP53*.

A

target2geo F10 --acagaatgggcaaatctaggaaggctgtgggttttccccctttggtctgaattaaga
TTACAGAAGGTCCAAATTTAGAAAGGGTAGGGGTTTACCCCTTTGCTCTATATAAGAA
***** * *****,***,*****, * ***** ***** ***** ** *. *

target2geo F10 atccaaactgttcctacgccacggttatgcactgggaagccaaaggcaactctgaccact
GGCCAAAGGGTTCGAACCCCTTCGTTAATCCCGGGGAACCAAGGCCAATTAAGCCAAGG
. ***** **** * *. ** * * * ***** *****, * ***, * * * *

target2geo F10 gttaaagcagtaggaagggttcttactagagacggctcttctgcctcctgagggggagggg
GTAAACCAGTAGGAAGGG-TAGGAATAGAGACGGCTCTTCTGCCTCTGAGGGGAGGGG
** ** ***** * * ***** ***** ***** *****

target2geo F10 tgccgtcaggcatggaggaaggactggcctcgttgtcagtggtcacggctccatctgtca
TGCCGTCAGGCATGAGGAAGG-----ACGCCTCC-----
***** ***** . *. *. * **** *

target2geo F10 gtgcatcaa
-TGCGTCCC
***, **

B

target4geo C11 -----ctccccatacatcag
CCATACATCAGTCAGACATGAAGATCAGTCAAGCCGCTGCCGTCTCTCCCATACATCAG

target4geo C11 tcagacatgaagatcagtcagccgctgccgtcagagagaagctcatttctccaggggag
TCAGACATGAAGATCAGTCAAACCGCTGCCGTGAGAGAGAAGTTTCATTTTCCAGGGGAG
***** ***** ***** ***** *****

target4geo C11 agg**cttacctcaaatatgttcgc**aggctcattgttgtactggttgatgatgattccgat
AGGGTT**CCAT**CAAAATATGTT**GC**AGGCTCATTGTGTACTGGTTGGATATGATTCCGAT
*** ** * ***** ***** ***** *****

target4geo C11 tggctgctacaccacttcaatccaccagaaagctgtctgtatccaagtcattcacatca
TGGTCGCTACACCACTTCAATCCACCCAGAAAGCTGTCT-TATCCAG-----
***** *****

target4geo C11 agttcagaaaggtaagttcaggaagatctgg
-----CATGCTGAGGCAG-TACAA
** *. * *** ** * ...

Figure S2. The sequences of *PGC-1α*-knockdown clones (F10 Target2 and C11 Target4). The sgRNA sequence is marked in blue.

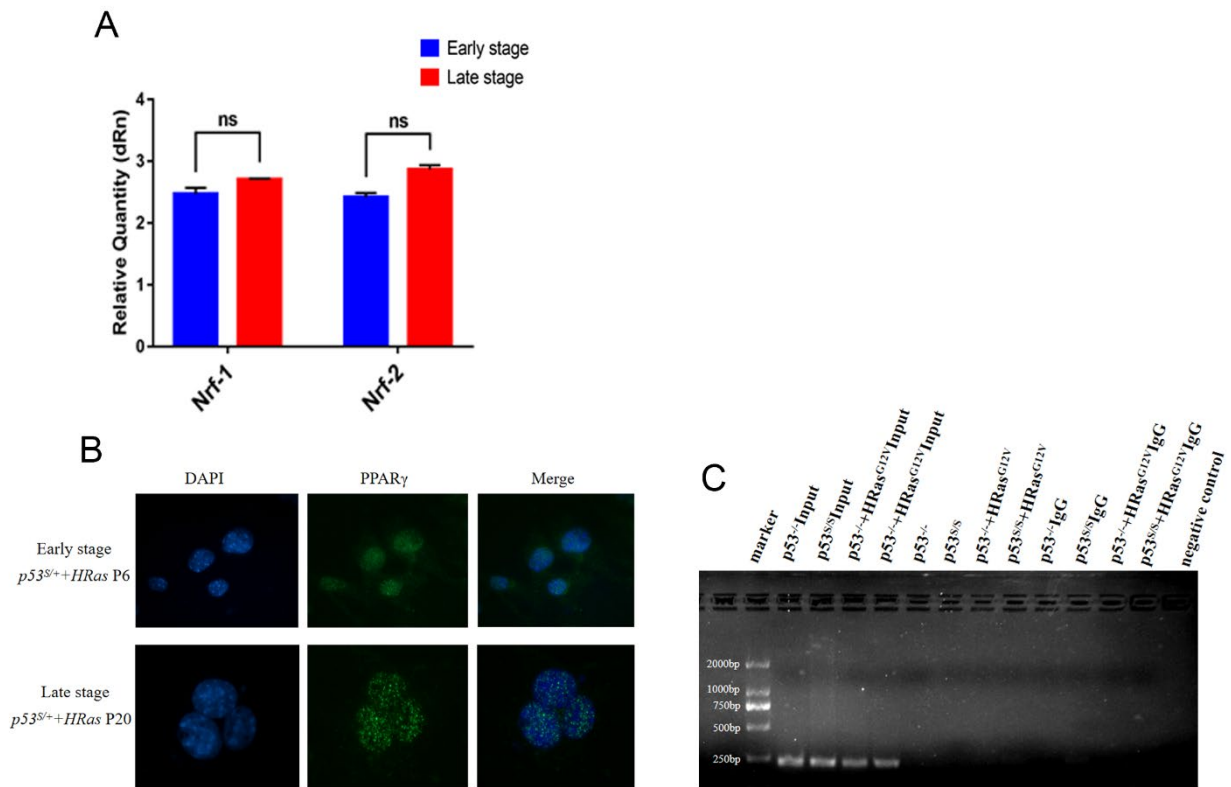


Figure S3. A: Real-time PCR was used to measure the expression levels of *Nrf-1* and *Nrf-2* in ES and LS cells. B: Immunostaining for PPAR γ in ES and LS cells. C: A ChIP assay was performed to determine the ability of p53S to bind to the PPAR γ promoter.