

Supplementary Figure S2

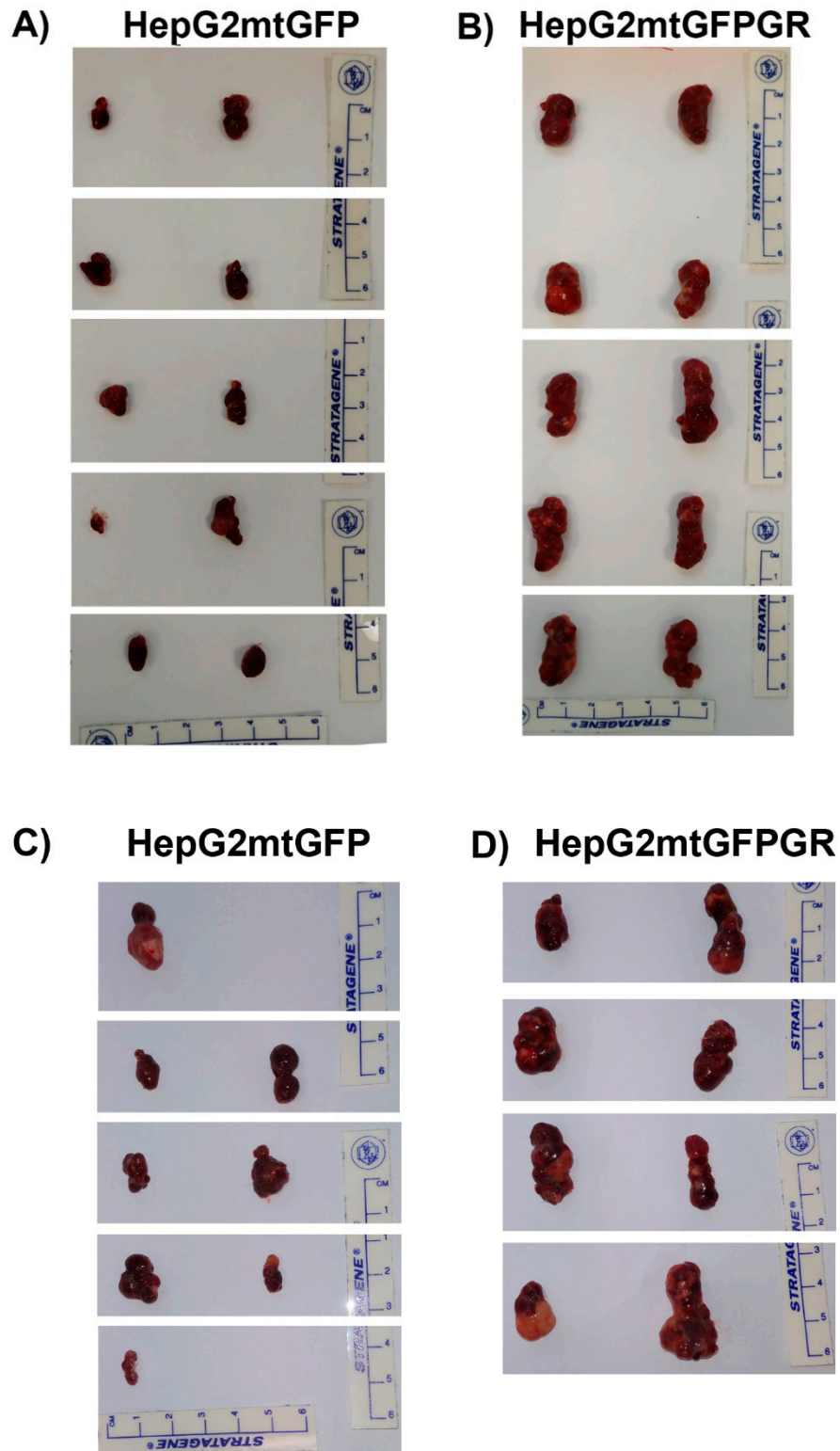


Figure S2. HepG2 tumors generated in NSG mice. Each mouse was inoculated bilaterally in the axillary regions of the rear flanks with A) 1×10^5 HepG2mtGFP cells, B) 1×10^5 HepG2mtGFPGR cells, C) 1×10^4 HepG2mtGFP cells, D) 1×10^4 HepG2mtGFPGR cells, $n=5$ (2 tumors/mouse)/group. In the case of C out of the 10 injections were developed 8 tumors

while in D one mouse found dead on the day of tumors' excision and thus was not included in the postmortem analysis.