

The Effects of Sirolimus and Magnesium on Primary Human Coronary Endothelial Cells: An In Vitro Study

Giorgia Fedele¹, Sara Castiglioni¹, Jeanette A. M. Maier^{1,*} and Laura Locatelli¹

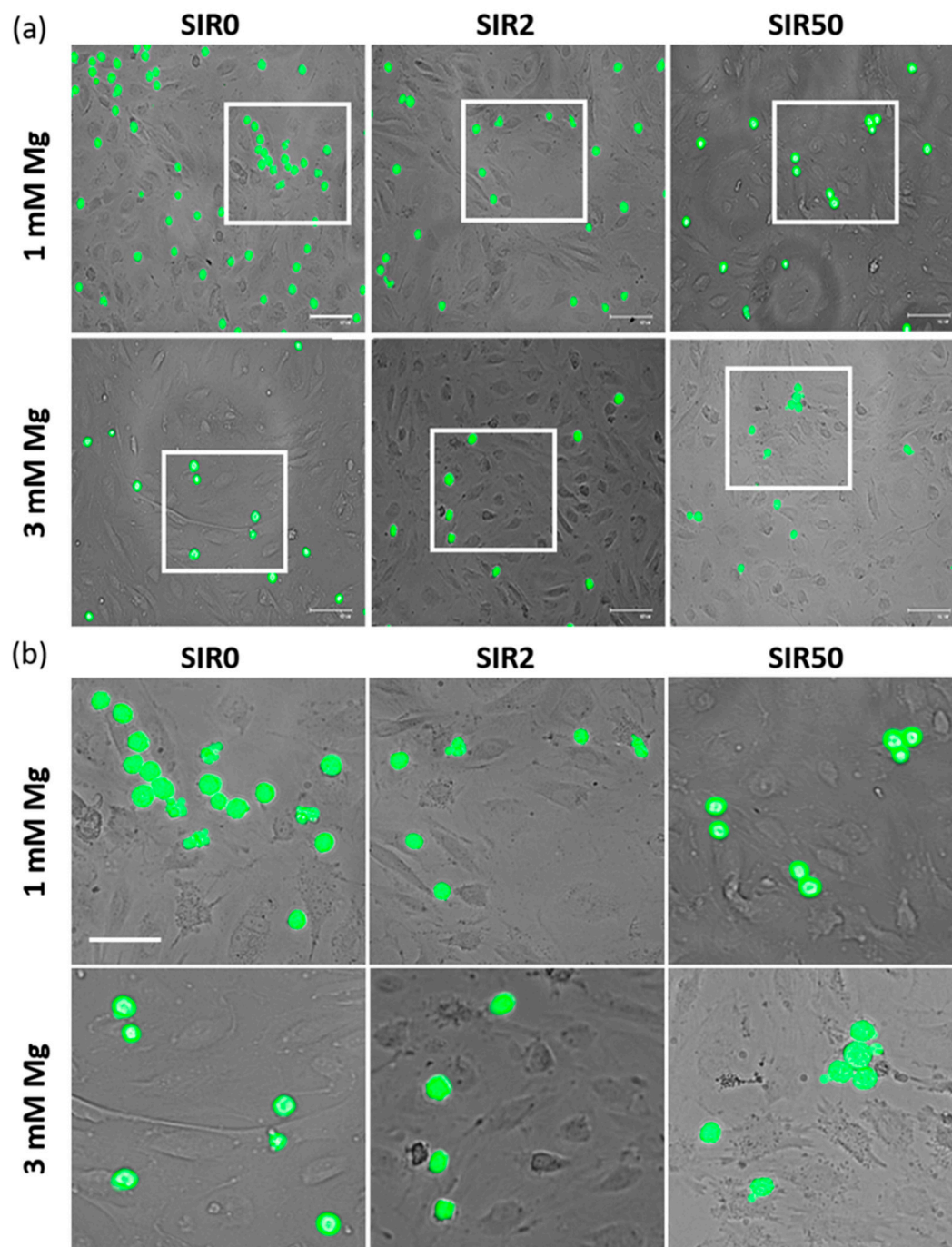


Figure S1. The effects of SIR on the adhesion of U937 to hCAEC. After 4h of treatment with LPS, hCAEC were cultured with 1 or 3 mM Mg in the absence (SIR0) or in the presence of SIR (2 and 50 ng/mL). Fluorescent-U937 cells were incubated with hCAEC for 30 min. (a) Images were acquired using Flouid Microscope and the attached U937 for each field were counted. Scale bar: 40 μm. (b) Images in “a” were zoomed to better appreciate both hCAEC and U937 cells. Scale bar: 40 μm.

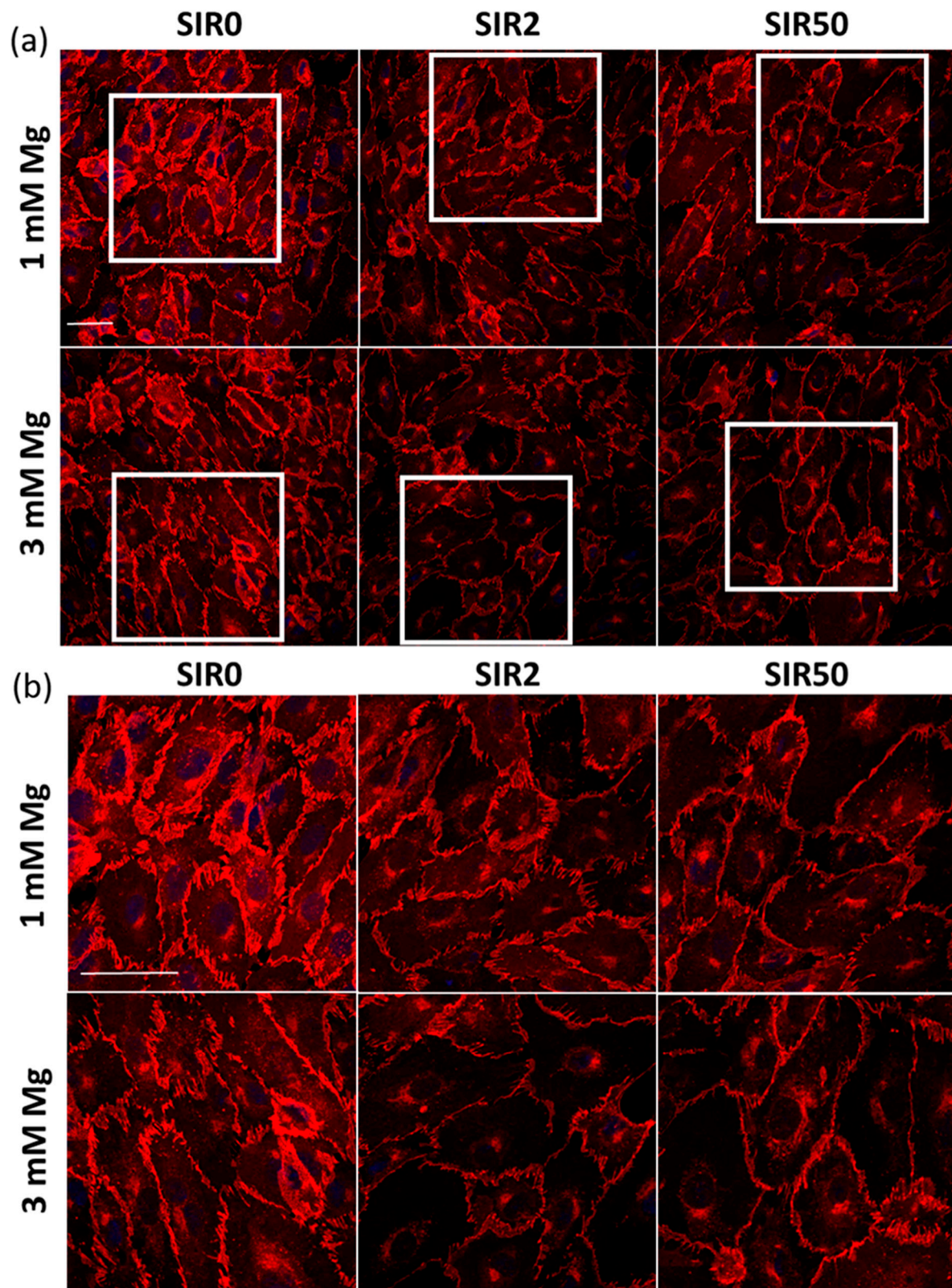


Figure S2. The effects of SIR on the localization of VE-CAD. hCAEC were cultured with 1 or 3 mM Mg for 48h in the absence (SIR0) or in the presence of SIR (2 and 50 ng/mL). The cells were incubated with antibodies anti-VE-CAD and then stained with an Alexa Fluor 546 secondary antibody. DAPI was used to stain the nuclei. (a) Images were acquired using a 40X objective in oil by an SP8 Leica confocal microscope. Scale bar: 40 μ m. (b) Images in “a” were zoomed to better appreciate the integrity of VE-CAD junctions. Scale bar: 40 μ m.

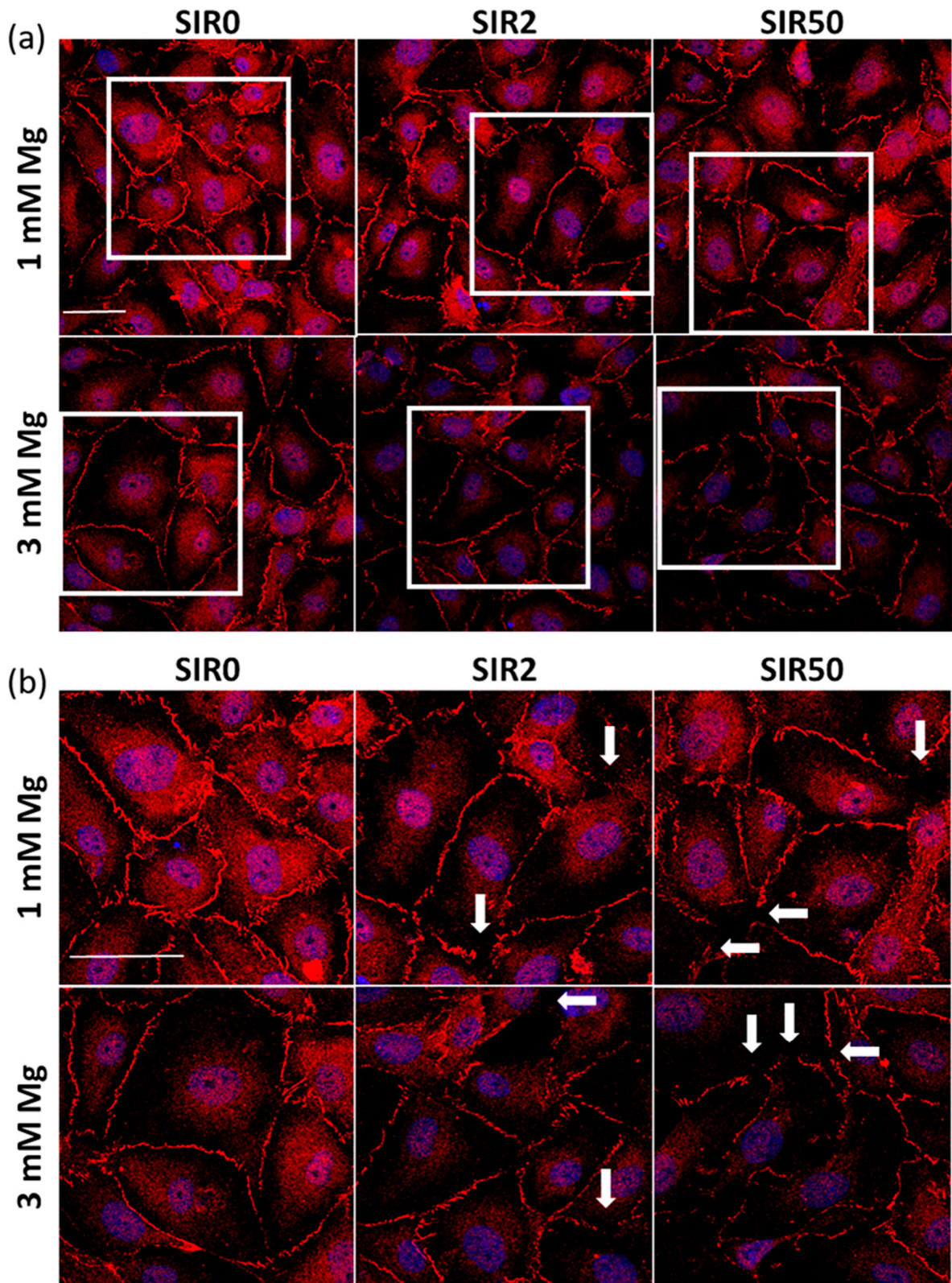


Figure S3. The effects of SIR on the localization of ZO-1. hCAEC were cultured with 1 or 3 mM Mg for 48h in the absence (SIR0) or in the presence of SIR (2 and 50 ng/mL). The cells were incubated with antibodies anti-ZO-1 and then stained with an Alexa Fluor 546 secondary antibody. DAPI was used to stain the nuclei. Images were acquired using a 40X objective in oil by an SP8 Leica confocal microscope. Scale bar: 40 μ m. (b) Images in “a” were zoomed to better appreciate the integrity of ZO-1 junctions. Scale bar: 40 μ m.