

Association of High LAT1 Expression with Poor Prognosis and Recurrence in Colorectal Cancer Patients Treated with Oxaliplatin-Based Adjuvant Chemotherapy

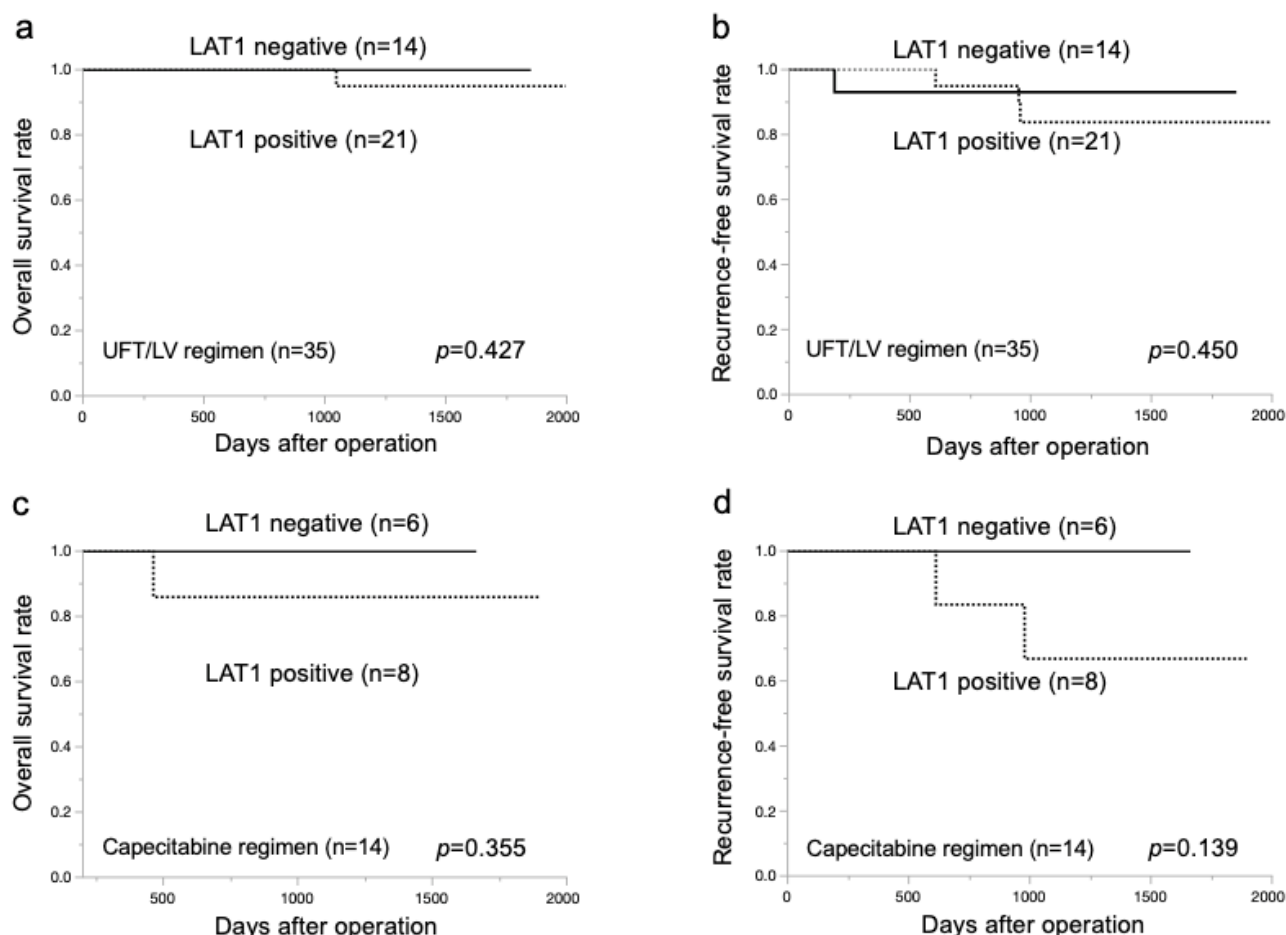


Figure S1. Kaplan–Meier survival curves of patients with CRC treated by UFT/LV or capecitabine according to LAT1 expression (a) (b) Kaplan–Meier analysis of overall survival and recurrence-free survival in 35 CRC patients treated by UFT/LV regimen according to LAT1 expression ($p = 0.4267$ and $p = 0.45$, respectively). (c) (d) Kaplan–Meier analyses of overall survival and recurrence-free survival in 14 CRC patients treated with capecitabine according to LAT1 expression ($p = 0.355$ and $p = 0.139$, respectively).

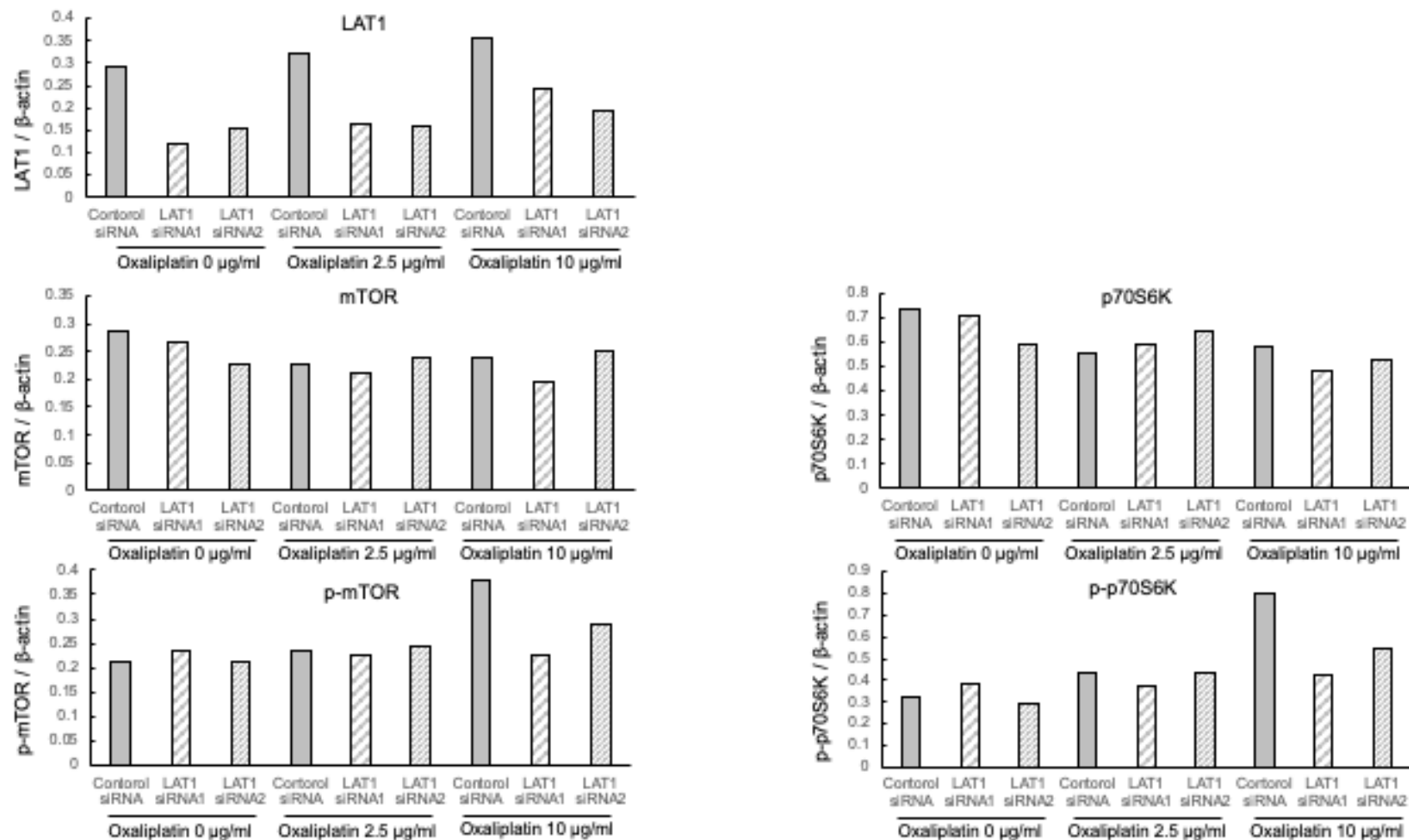


Figure S2. Western blot analysis of LAT1, mTOR, p-mTOR, p70S6K, and p-p70S6K in CRC cell lines treated with LAT1 siRNA and oxaliplatin. These proteins were normalized to the level of β -actin expression. The intensity of their blots was measured using ImageJ software (Rasband, W.S., ImageJ, U. S. National Institutes of Health, Bethesda, Maryland, USA).

Table S1. Univariate and multivariate analysis of clinicopathological factors affecting recurrence-free survival rate following surgery in 43 CRC patients treated by adjuvant CAPOX.

| Factors | | Univariate Analysis | | | Multivariate Analysis | | |
|---------------------|----------|---------------------|-------------|-----------------|-----------------------|-------------|-----------------|
| | | Hazard ratio | 95% CI | <i>p</i> -value | Hazard ratio | 95% CI | <i>p</i> -value |
| Age | 70≥ | | Reference | | | Reference | |
| | 70< | 3.853 | 1.102-13.48 | 0.035* | 2.054 | 0.391-10.80 | 0.395 |
| Sex | Male | | Reference | | | | |
| | Female | 0.934 | 0.273-3.191 | 0.913 | | | |
| Smoking | Yes | | Reference | | | | |
| | No | 0.862 | 0.263-2.825 | 0.806 | | | |
| T factor | T1-3 | | Reference | | | | |
| | T4 | 3.191 | 0.973-10.46 | 0.056 | | | |
| N factor | Absent | | Reference | | | | |
| | Present | 640866872 | 0- · | 0.999 | | | |
| Tumor location | Right | | Reference | | | Reference | |
| | Left | 0.299 | 0.091-0.987 | 0.048* | 0.508 | 0.102-2.527 | 0.408 |
| Pathological stage | II | | Reference | | | | |
| | III | 1.84 | 0.234-14.45 | 0.562 | | | |
| Histology | Well | | Reference | | | | |
| | Not-well | 0.58 | 0.169-1.972 | 0.38 | | | |
| Lymphatic invasion | Absent | | Reference | | | | |
| | Present | 599081383 | 0- · | 0.999 | | | |
| Vascular invasion | Absent | | Reference | | | | |
| | Present | 692416517 | 0- · | 0.999 | | | |
| Perineural invasion | Absent | | Reference | | | | |
| | Present | 2.324 | 0.680-7.946 | 0.179 | | | |
| LAT1 | Negative | | Reference | | | Reference | |
| | Positive | 13.32 | 1.685-105.2 | 0.014* | 12.53 | 1.549-101.4 | 0.018* |

CI, confidence interval; **p*<0.05.