

The mycotoxin patulin inhibits the mitochondrial carnitine/acylcarnitine carrier (SLC25A20) by interaction with Cys136. Implications for human health

Nicola Giangregorio^{1,†,*}, Annamaria Tonazzi^{1,†}, Cosima Damiana Calvano², Ciro Leonardo Pierri³, Giovanna Incampo⁴, Tommaso R.I. Cataldi² and Cesare Indiveri^{1,5}

¹ CNR Institute of Biomembranes, Bioenergetics and Molecular Biotechnologies (IBIOM), Via Amendola 122/O, 70126 Bari, Italy

² Department of Chemistry, University of Bari Aldo Moro, via Orabona 4, 70126, Bari, Italy

³ Department of Pharmacy-Pharmaceutical Sciences, University of Bari Aldo Moro, via Orabona 4, 70126, Bari, Italy

⁴ Department of Bioscience, Biotechnology and Environment, University of Bari, Italy

⁵ Department DiBEST (Biologia, Ecologia, Scienze della Terra) Unit of Biochemistry and Molecular Biotechnology, University of Calabria, Via Bucci 4C, 87036 Arcavacata di Rende, Italy

† These authors contributed equally to this work.

* Correspondence: n.giangregorio@ibiom.cnr.it

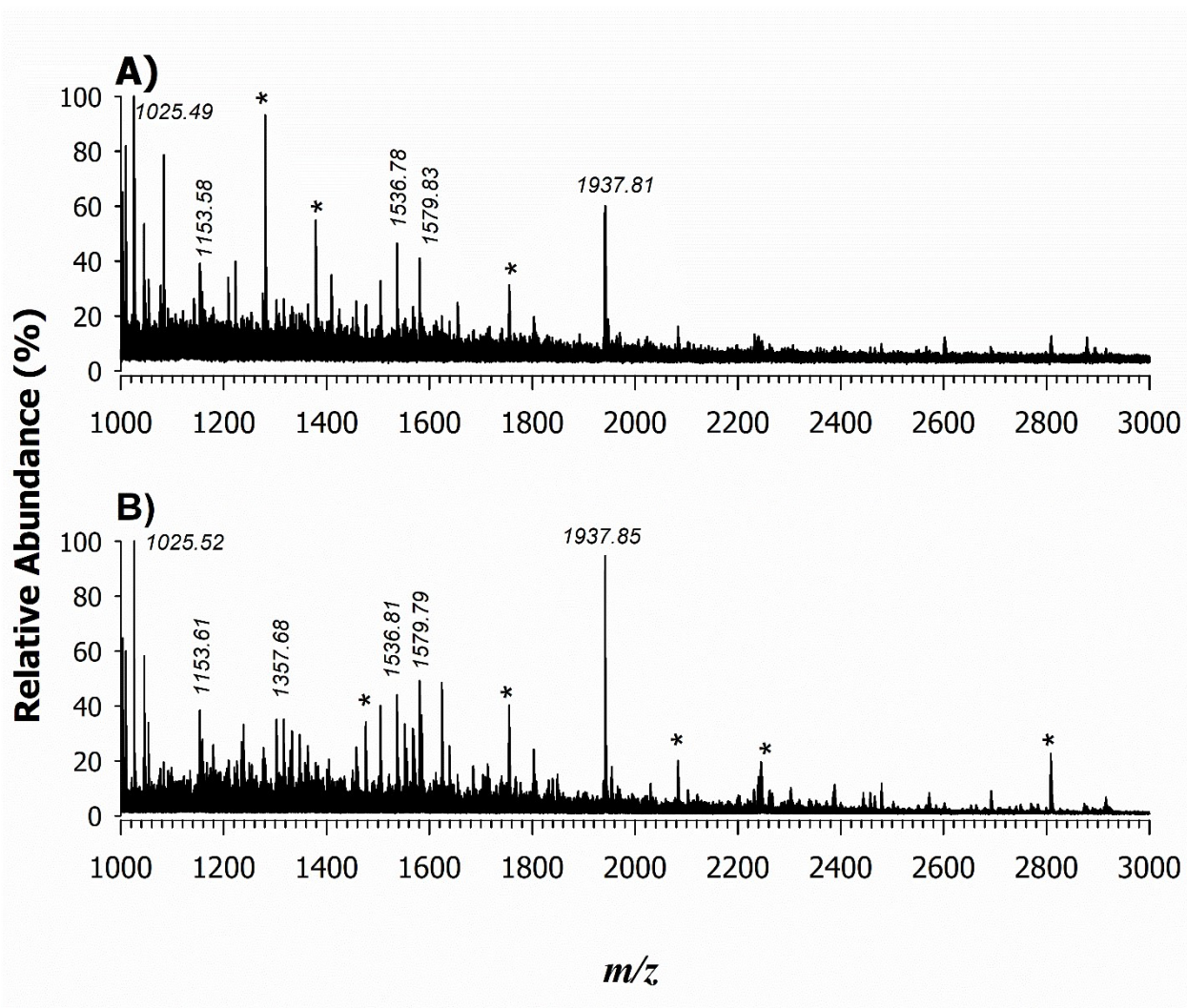


Figure S1. PMF of in-gel digestion of the 30 kDa bands excised from control (A) and (B) PAT-treated samples. Table 1 lists all main peak signals and their amino acid sequence. Asterisked peaks are most likely due to co-extracted CAC and digested proteins

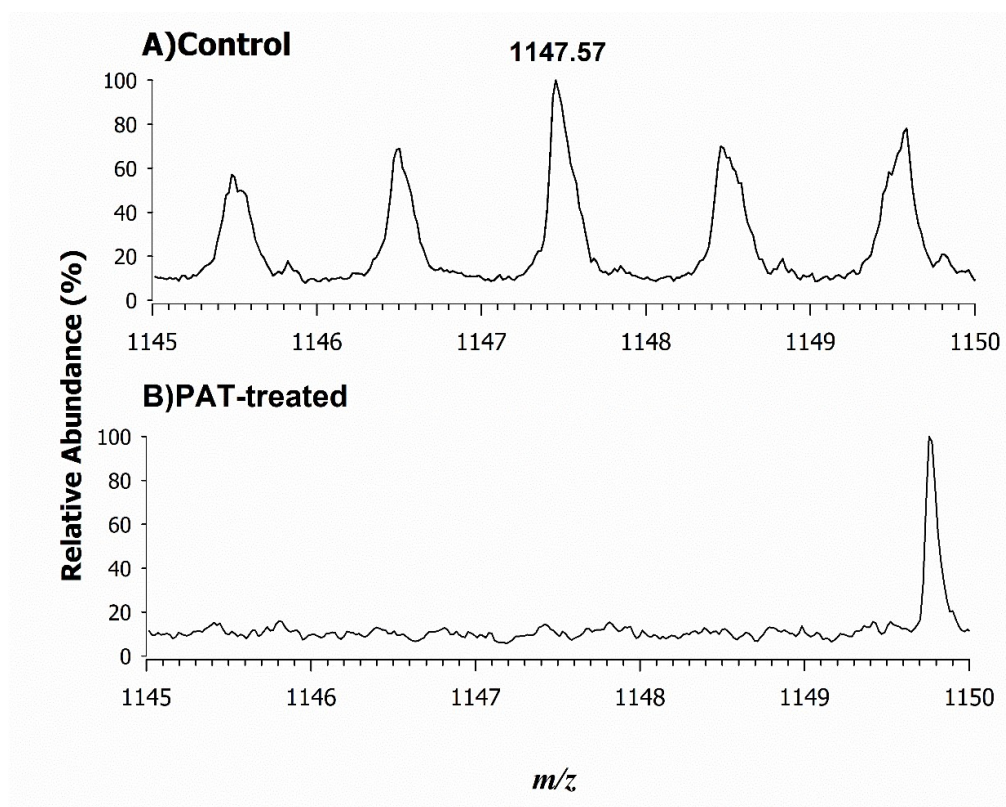


Figure S2. A zoom on the peak assigned as peptide CLLQIQASSGK, at m/z 1147.57, is shown for control (A) and PAT-treated (B) samples.

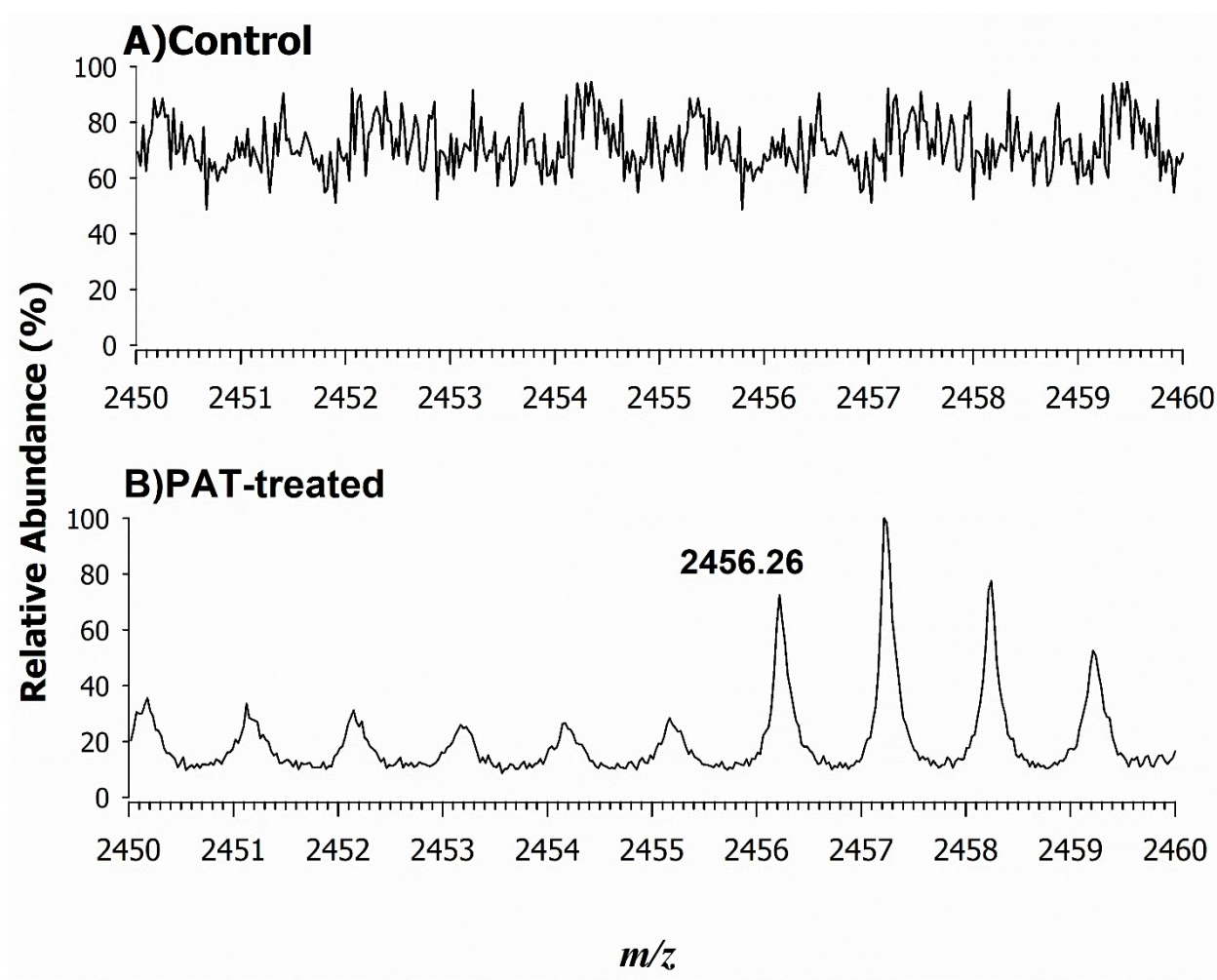


Figure S3. A zoom on the peak assigned as peptide CLLQIQASSGKNKYSGTLDCAKK, at m/z 2456.3, is shown for control (A) and PAT-treated (B) samples.

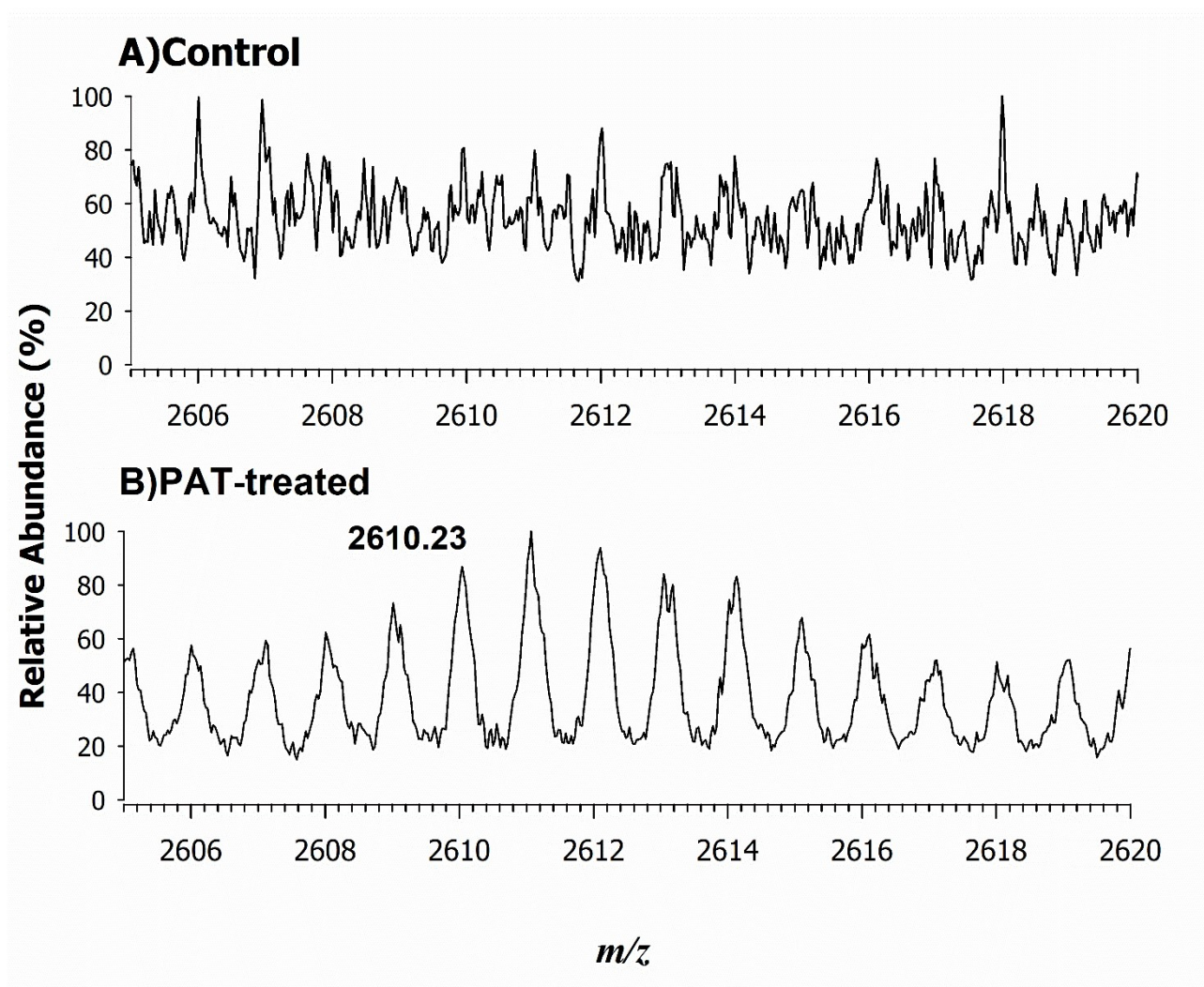


Figure S4. A zoom on the peak associated with modified peptide, at m/z 2610.23, is shown for control (A) and PAT-treated (B) samples.