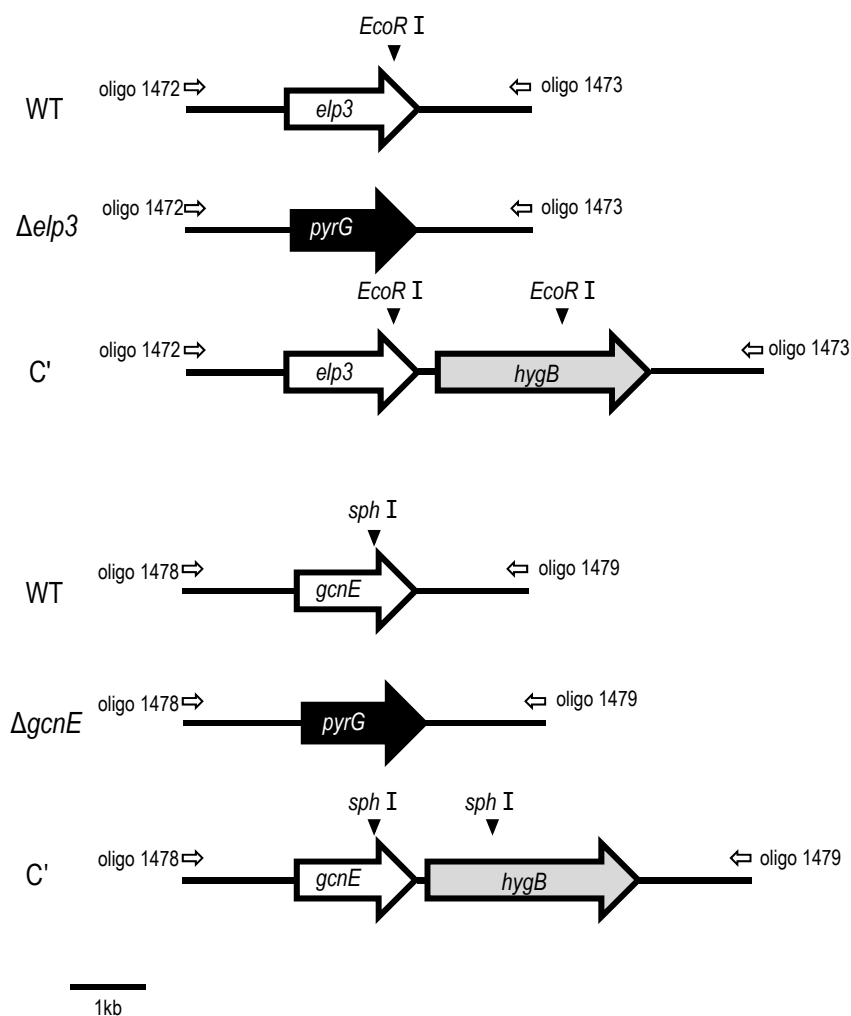
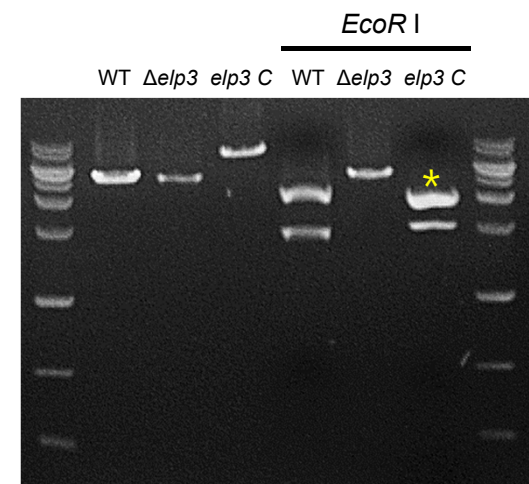


A. Restriction maps



B. PCR amplicons and cut with *EcoR* I



C. PCR amplicons and cut with *Sph* I

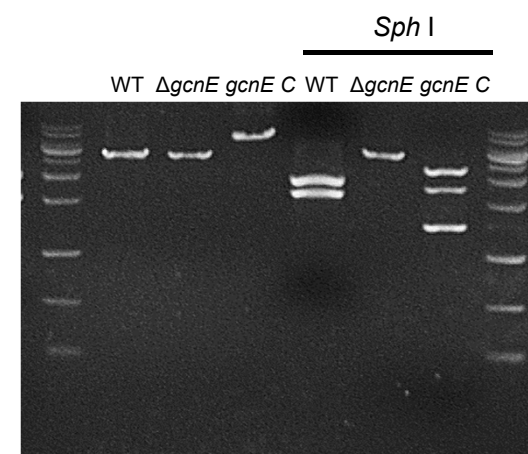


Figure S2. Confirmation of WT, mutants, and complemented strains. (A) Schematic illustration for *elp3* and *gcnE* genes region of WT, mutants, and complemented strains, respectively. (B) PCR results for deletion and complementation of *elp3* and *EcoR* I digestion pattern of the individual amplicons. (C) PCR results for deletion and complementation of *gcnE* and *Sph* I digestion pattern of the individual amplicons. * indicates two DNA fragments (2,761 and 2,666 bp).