

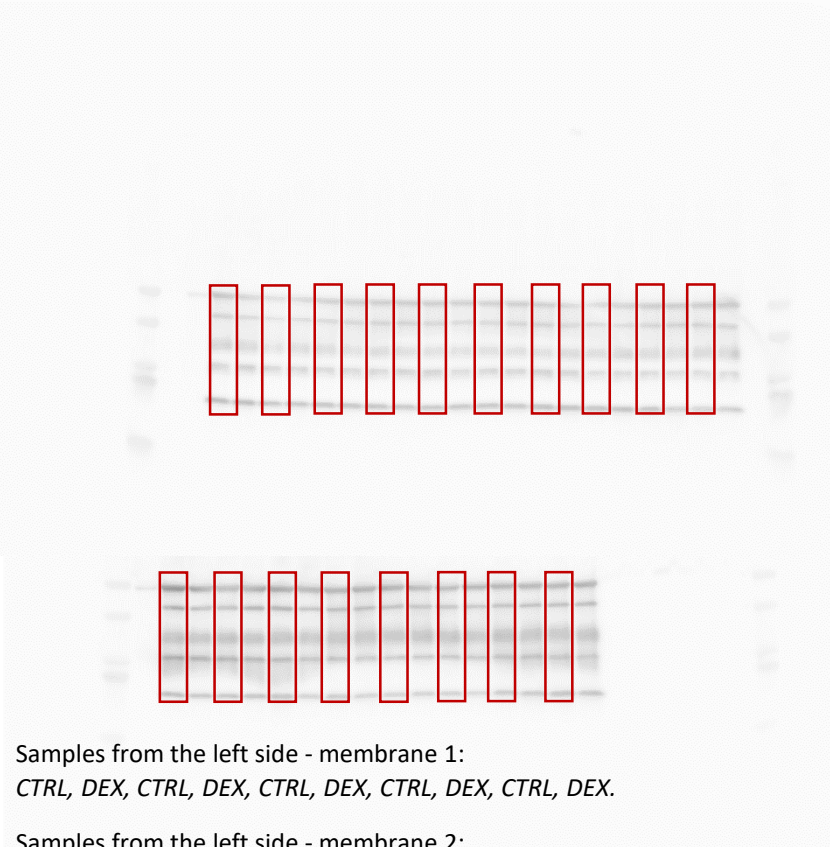
Supplementary materials

Western blot membranes

OXPPOS

Frontal cortex

membrane 1 and membrane 2



Samples from the left side - membrane 1:
CTRL, DEX, CTRL, DEX, CTRL, DEX, CTRL, DEX, CTRL, DEX.

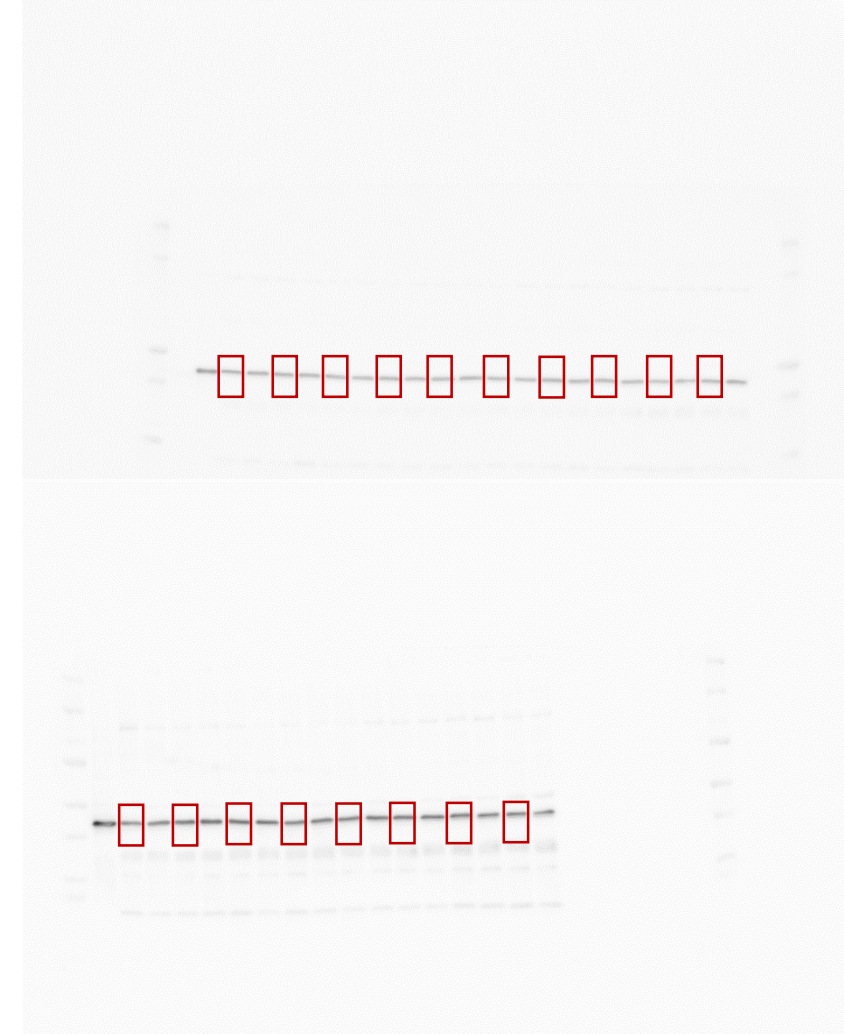
Samples from the left side - membrane 2:
CTRL, DEX, CTRL, DEX, CTRL, DEX, CTRL, DEX.

The results of the experiment are shown in Figure 3.

β -actin as loading control to OXPPOS

Frontal cortex

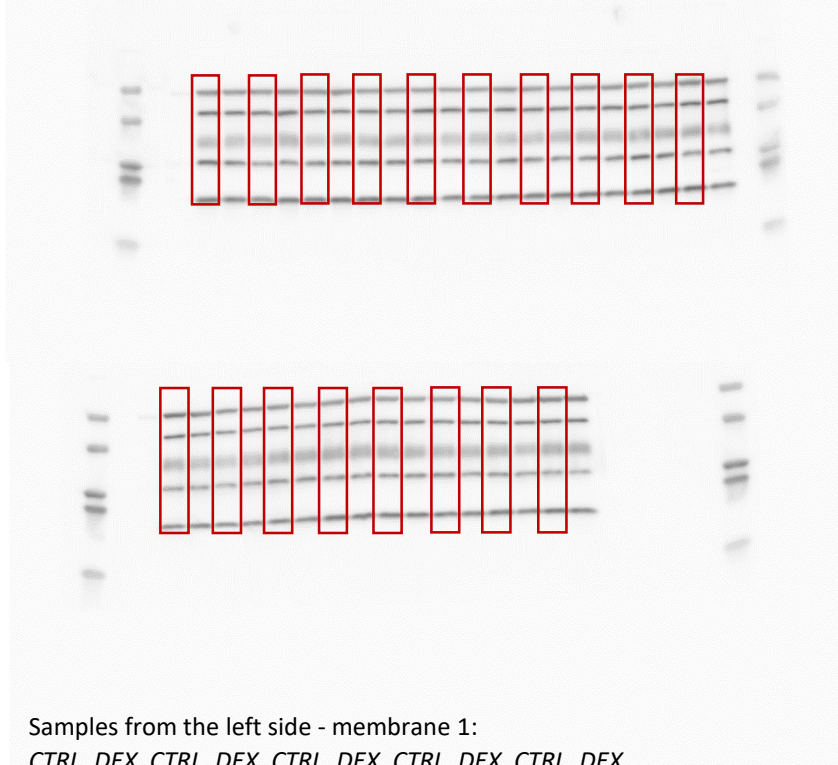
membrane 1 and membrane 2



OXPPOS

Hippocampus

membrane 1 and membrane 2



Samples from the left side - membrane 1:
CTRL, DEX, CTRL, DEX, CTRL, DEX, CTRL, DEX, CTRL, DEX.

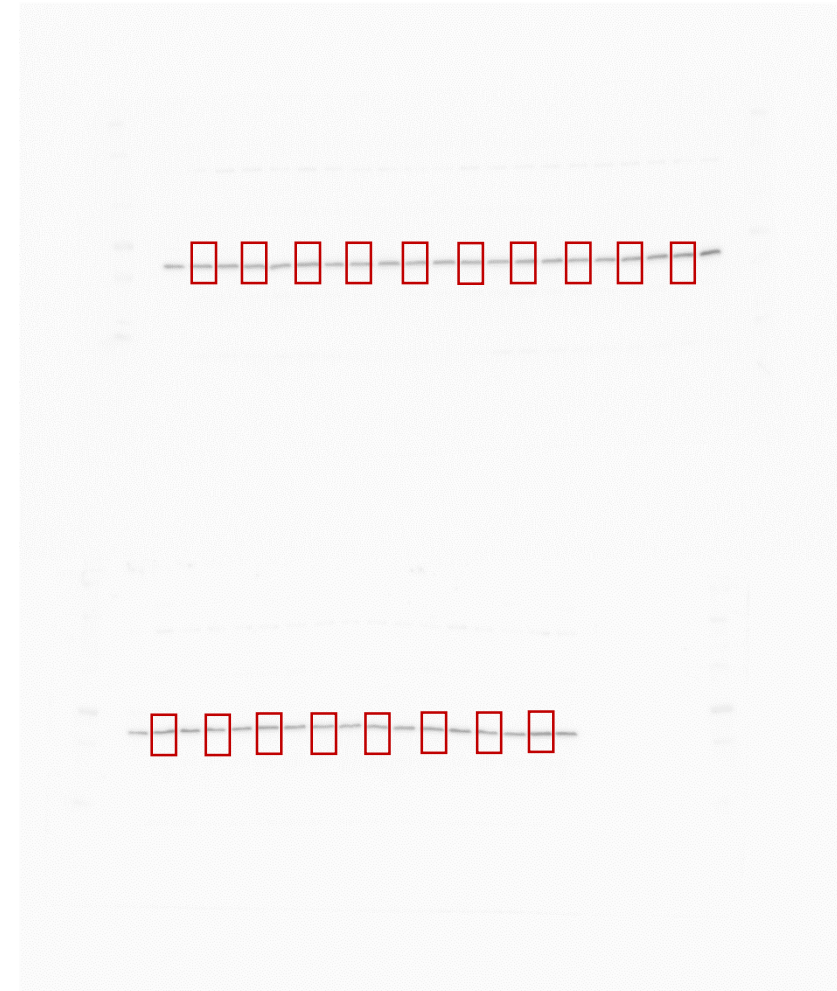
Samples from the left side - membrane 2:
CTRL, DEX, CTRL, DEX, CTRL, DEX, CTRL, DEX, CTRL, DEX.

The results of the experiment are shown in Figure 3.

β -actin as loading control to OXPPOS

Hippocampus

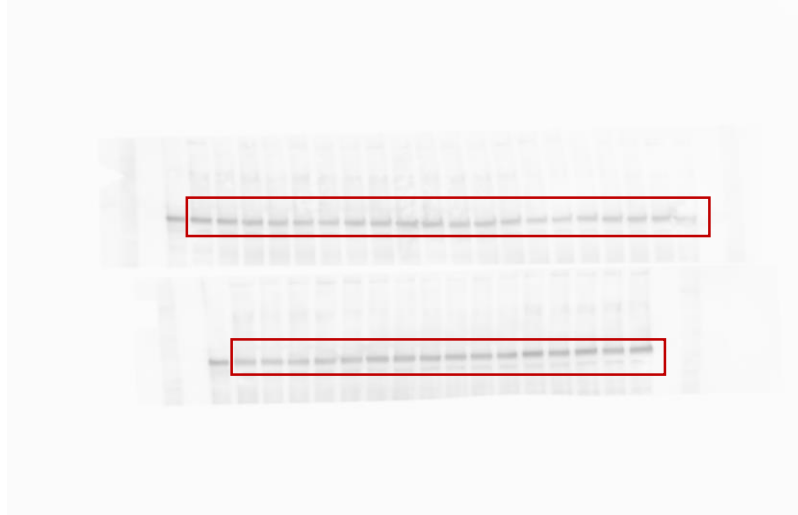
membrane 1 and membrane 2



Hexokinase 1

Frontal cortex

membrane 1 and membrane 2



Samples from the left side - membrane 1:

CTRL, CTRL + STRESS, DEX, DEX + STRESS, CTRL, CTRL + STRESS, DEX, DEX + STRESS, CTRL, CTRL + STRESS, DEX, DEX + STRESS, CTRL, CTRL + STRESS, DEX, DEX + STRESS.

Samples from the left side - membrane 2:

CTRL, CTRL + STRESS, DEX, DEX + STRESS, CTRL, CTRL + STRESS, DEX, DEX + STRESS, CTRL, CTRL + STRESS, DEX, DEX + STRESS, CTRL, CTRL + STRESS, DEX, DEX + STRESS.

The results of the experiment are shown in Figure 7.

β -actin as loading control to Hexokinase 1

Frontal cortex

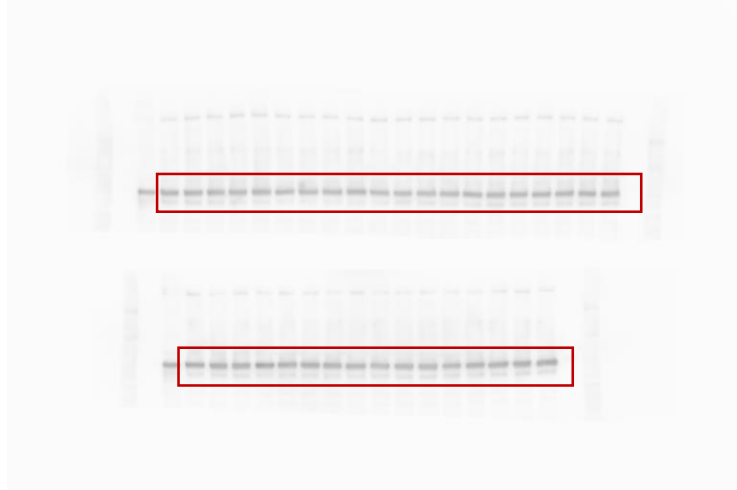
membrane 1 and membrane 2



Hexokinase 1

Hippocampus

membrane 1 and membrane 2



Samples from the left side - membrane 1:

CTRL, CTRL + STRESS, DEX, DEX + STRESS, CTRL, CTRL + STRESS, DEX, DEX + STRESS, CTRL, CTRL + STRESS, DEX, DEX + STRESS, CTRL, CTRL + STRESS, DEX, DEX + STRESS.

Samples from the left side - membrane 2:

CTRL, CTRL + STRESS, DEX, DEX + STRESS, CTRL, CTRL + STRESS, DEX, DEX + STRESS, CTRL, CTRL + STRESS, DEX, DEX + STRESS, CTRL, CTRL + STRESS, DEX, DEX + STRESS.

The results of the experiment are shown in Figure 7.

β -actin as loading control to Hexokinase 1

Hippocampus

membrane 1 and membrane 2



MCT-2

Frontal cortex

membrane 1 and membrane 2



Samples from the left side - membrane 1 and 2:

CTRL, CTRL + STRESS, DEX, DEX + STRESS, CTRL, CTRL + STRESS, DEX, DEX + STRESS, CTRL, CTRL + STRESS, DEX, DEX + STRESS, CTRL, CTRL + STRESS, DEX, DEX + STRESS.

The results of the experiment are shown in Figure 8.

Vinculin as loading control to MCT-2

Frontal cortex

membrane 1 and membrane 2



MCT-2

Hippocampus

membrane 1 and membrane 2



Samples from the left side - membrane 1 and 2:

CTRL, CTRL + STRESS, DEX, DEX + STRESS, CTRL, CTRL + STRESS, DEX, DEX + STRESS, CTRL, CTRL + STRESS, DEX, DEX + STRESS, CTRL, CTRL + STRESS, DEX, DEX + STRESS, CTRL, CTRL + STRESS, DEX, DEX + STRESS.

The results of the experiment are shown in Figure 8.

Vinculin as loading control to MCT-2

Hippocampus

membrane 1 and membrane 2



MCT-4

Frontal cortex

membrane 1 and membrane 2



Samples from the left side - membrane 1 and 2:

CTRL, CTRL + STRESS, DEX, DEX + STRESS, CTRL, CTRL + STRESS, DEX, DEX + STRESS, CTRL, CTRL + STRESS, DEX, DEX + STRESS, CTRL, CTRL + STRESS, DEX, DEX + STRESS.

.

The results of the experiment are shown in Figure 8.

Vinculin as loading control to MCT-4

Frontal cortex

membrane 1 and membrane 2



MCT-4

Hippocampus

membrane 1 and membrane 2



Vinculin as loading control to MCT-4

Hippocampus

membrane 1 and membrane 2



Samples from the left side - membrane 1 and 2:

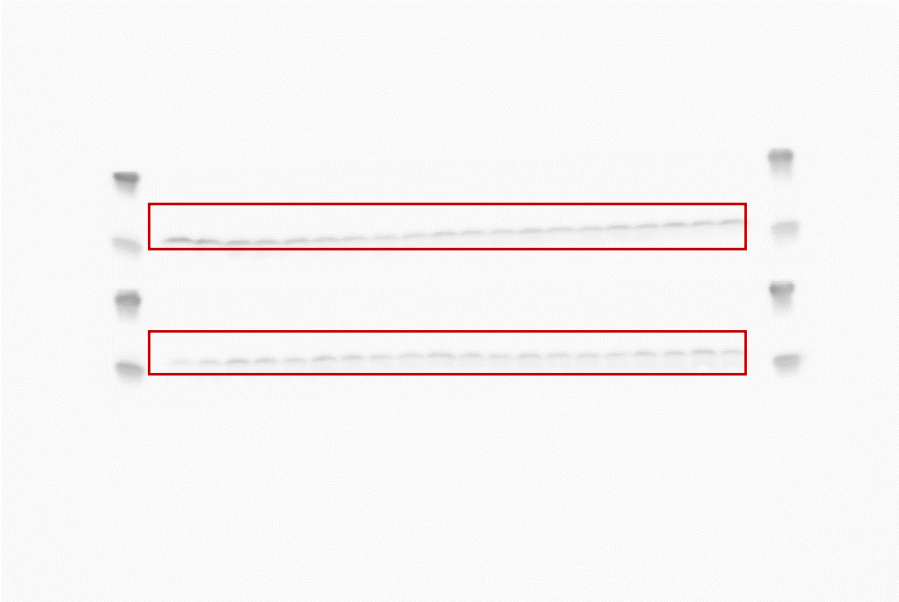
CTRL, CTRL + STRESS, DEX, DEX + STRESS, CTRL, CTRL + STRESS, DEX, DEX + STRESS, CTRL, CTRL + STRESS, DEX, DEX + STRESS, CTRL, CTRL + STRESS, DEX, DEX + STRESS, CTRL, CTRL + STRESS, DEX, DEX + STRESS.

The results of the experiment are shown in Figure 8.

MPC-1

Frontal cortex

membrane 1 and membrane 2



Samples from the left side - membrane 1 and 2:

CTRL, CTRL + STRESS, DEX, DEX + STRESS, CTRL, CTRL + STRESS, DEX, DEX + STRESS, CTRL, CTRL + STRESS, DEX, DEX + STRESS, CTRL, CTRL + STRESS, DEX, DEX + STRESS, CTRL, CTRL + STRESS, DEX, DEX + STRESS.

The results of the experiment are shown in Figure 8.

Vinculin as loading control to MPC-1

Frontal cortex

membrane 1 and membrane 2



MPC-1

Hippocampus

membrane 1 and membrane 2



Samples from the left side - membrane 1 and 2:

*CTRL, CTRL + STRESS, DEX, DEX + STRESS, CTRL, CTRL + STRESS, DEX, DEX + STRESS,
CTRL, CTRL + STRESS, DEX, DEX + STRESS, CTRL, CTRL + STRESS, DEX, DEX + STRESS,
CTRL, CTRL + STRESS, DEX, DEX + STRESS.*

The results of the experiment are shown in Figure 8.

Vinculin as loading control to MPC-1

Hippocampus

membrane 1 and membrane 2



MPC-2

Frontal cortex

membrane 1 and membrane 2



Samples from the left side - membrane 1 and 2:

CTRL, CTRL + STRESS, DEX, DEX + STRESS, CTRL, CTRL + STRESS, DEX, DEX + STRESS, CTRL, CTRL + STRESS, DEX, DEX + STRESS, CTRL, CTRL + STRESS, DEX, DEX + STRESS, CTRL, CTRL + STRESS, DEX, DEX + STRESS.

The results of the experiment are shown in Figure 8.

Vinculin as loading control to MPC-2

Frontal cortex

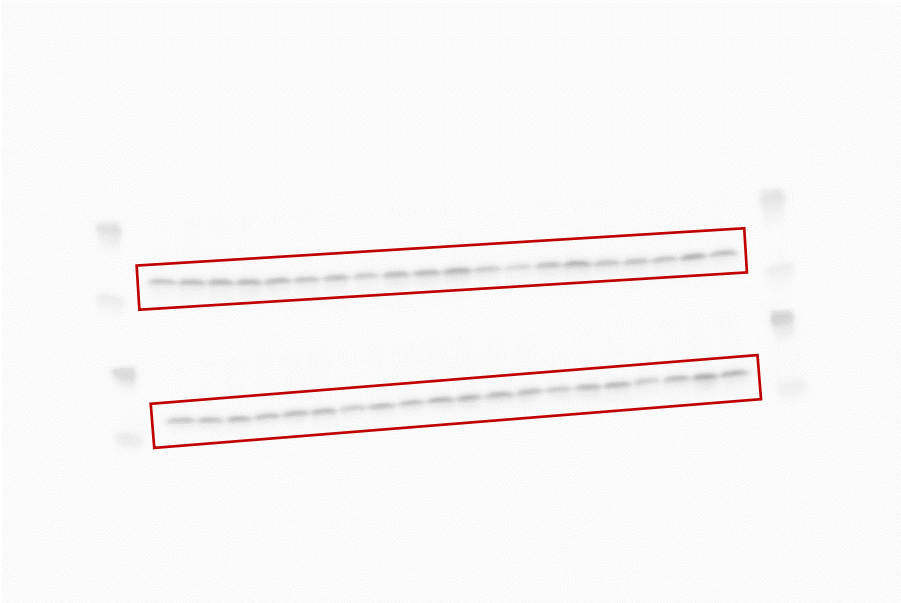
membrane 1 and membrane 2



MPC-2

Hippocampus

membrane 1 and membrane 2



Samples from the left side - membrane 1 and 2:

*CTRL, CTRL + STRESS, DEX, DEX + STRESS, CTRL, CTRL + STRESS, DEX, DEX + STRESS,
CTRL, CTRL + STRESS, DEX, DEX + STRESS, CTRL, CTRL + STRESS, DEX, DEX + STRESS,
CTRL, CTRL + STRESS, DEX, DEX + STRESS.*

The results of the experiment are shown in Figure 8.

Vinculin as loading control to MPC-2

Hippocampus

membrane 1 and membrane 2



GPR81

Frontal cortex

membrane 1 and membrane 2



Samples from the left side - membrane 1 and 2:

CTRL, CTRL + STRESS, DEX, DEX + STRESS, CTRL, CTRL + STRESS, DEX, DEX + STRESS, CTRL, CTRL + STRESS, DEX, DEX + STRESS, CTRL, CTRL + STRESS, DEX, DEX + STRESS, CTRL, CTRL + STRESS, DEX, DEX + STRESS.

The results of the experiment are shown in Figure 9.

Vinculin as loading control to GPR81

Frontal cortex

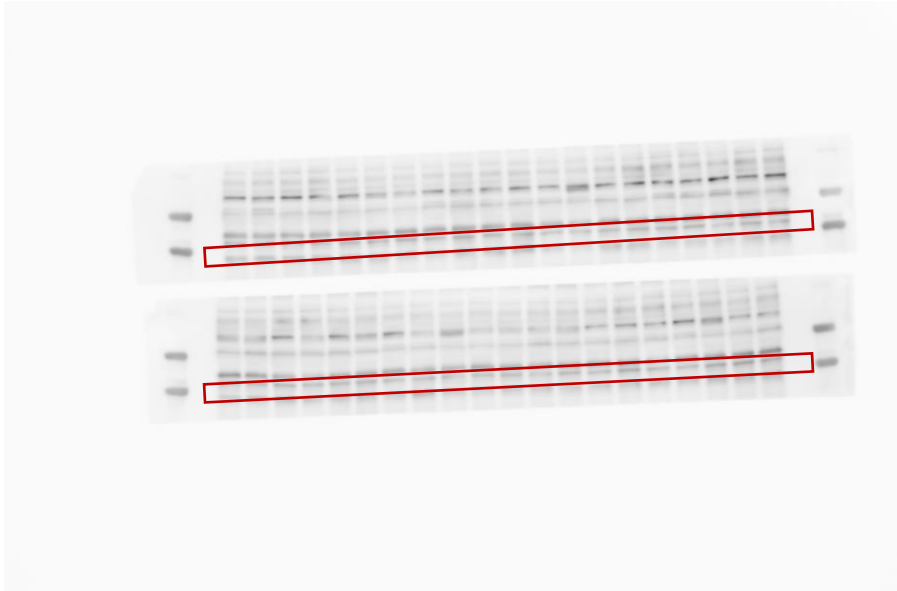
membrane 1 and membrane 2



GPR81

Hippocampus

membrane 1 and membrane 2



Samples from the left side - membrane 1 and 2:

*CTRL, CTRL + STRESS, DEX, DEX + STRESS, CTRL, CTRL + STRESS, DEX, DEX + STRESS,
CTRL, CTRL + STRESS, DEX, DEX + STRESS, CTRL, CTRL + STRESS, DEX, DEX + STRESS,
CTRL, CTRL + STRESS, DEX, DEX + STRESS.*

The results of the experiment are shown in Figure 9.

Vinculin as loading control to GPR81

Hippocampus

membrane 1 and membrane 2



pAkt

Frontal cortex

membrane 1 and membrane 2



Samples from the left side - membrane 1 and 2:

CTRL, CTRL + STRESS, DEX, DEX + STRESS, CTRL, CTRL + STRESS, DEX, DEX + STRESS, CTRL, CTRL + STRESS, DEX, DEX + STRESS, CTRL, CTRL + STRESS, DEX, DEX + STRESS, CTRL, CTRL + STRESS, DEX, DEX + STRESS.

The results of the experiment are shown in Figure 9.

Akt

Frontal cortex

membrane 1 and membrane 2



pAkt

Hippocampus

membrane 3 and membrane 4



Samples from the left side - membrane 1 and 2:

*CTRL, CTRL + STRESS, DEX, DEX + STRESS, CTRL, CTRL + STRESS, DEX, DEX + STRESS,
CTRL, CTRL + STRESS, DEX, DEX + STRESS, CTRL, CTRL + STRESS, DEX, DEX + STRESS,
CTRL, CTRL + STRESS, DEX, DEX + STRESS.*

The results of the experiment are shown in Figure 11.

Akt

Hippocampus

membrane 3 and membrane 4



β -actin as loading control to Akt and pAkt

Frontal cortex

Hippocampus

membrane 1 and membrane 2

membrane 3 and membrane 4



Samples from the left side - membrane 1-4:

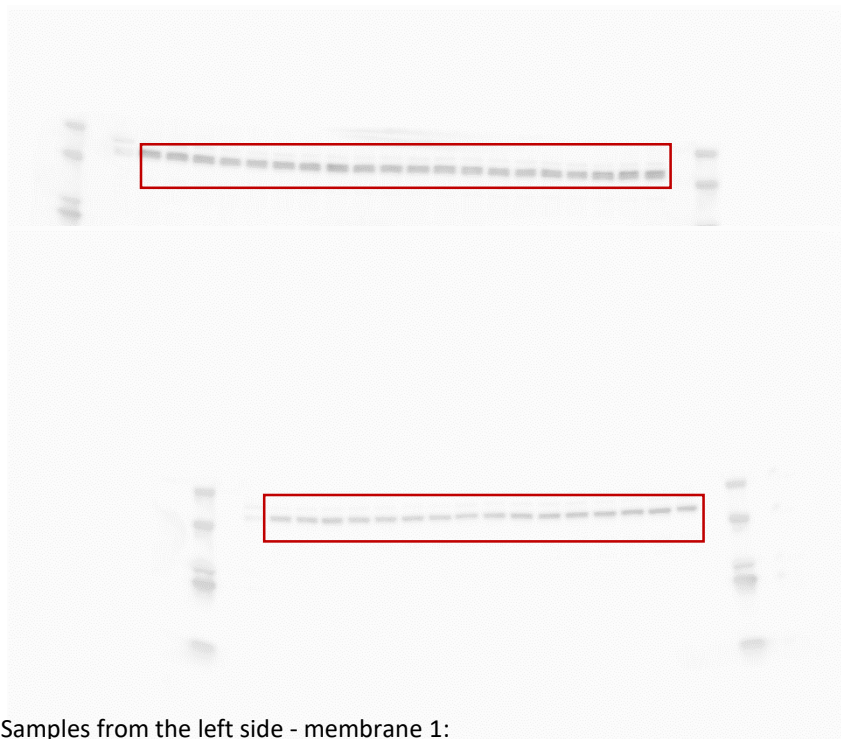
CTRL, CTRL + STRESS, DEX, DEX + STRESS, CTRL, CTRL + STRESS, DEX, DEX + STRESS,
CTRL, CTRL + STRESS, DEX, DEX + STRESS, CTRL, CTRL + STRESS, DEX, DEX + STRESS,
CTRL, CTRL + STRESS, DEX, DEX + STRESS.

The results of the experiment are shown in Figure 11.

UCP-4

Frontal cortex

membrane 1 and membrane 2



Samples from the left side - membrane 1:
CTRL, CTRL + STRESS, DEX, DEX + STRESS, CTRL, CTRL + STRESS, DEX, DEX + STRESS, CTRL, CTRL + STRESS, DEX, DEX + STRESS, CTRL, CTRL + STRESS, DEX, DEX + STRESS.

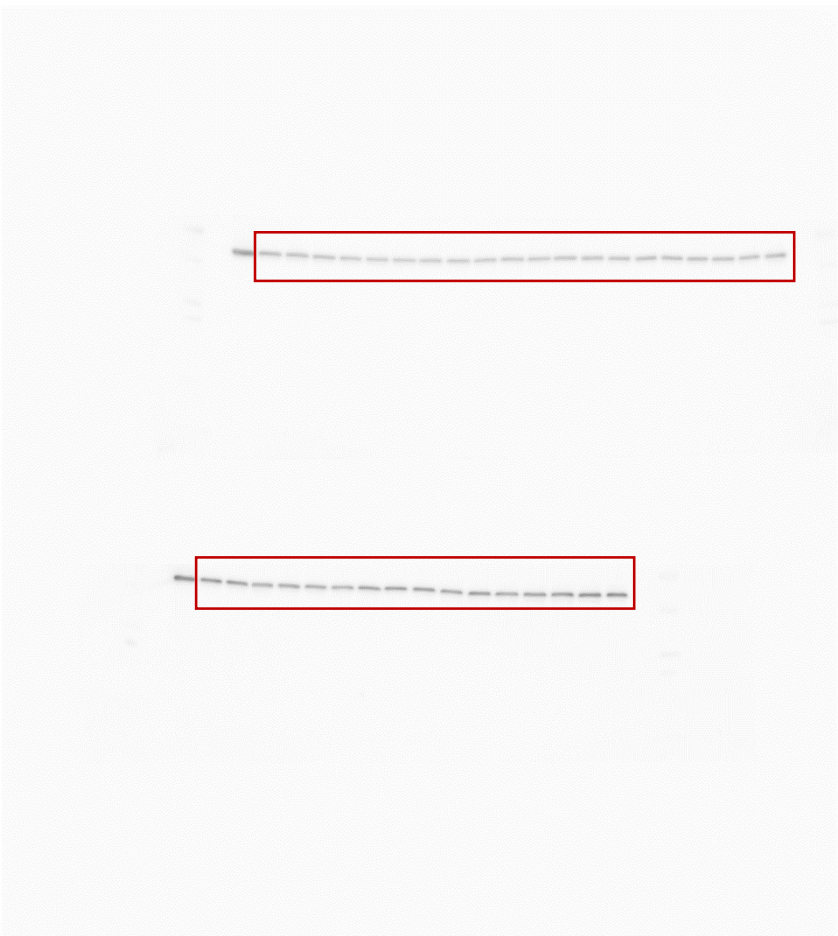
Samples from the left side - membrane 2:
CTRL, CTRL + STRESS, DEX, DEX + STRESS, CTRL, CTRL + STRESS, DEX, DEX + STRESS, CTRL, CTRL + STRESS, DEX, DEX + STRESS, CTRL, CTRL + STRESS, DEX, DEX + STRESS.

The results of the experiment are shown in Table 1.

β -actin as loading control to UCP-4

Frontal cortex

membrane 1 and membrane 2



UCP-4

Hippocampus

membrane 1 and membrane 2



Samples from the left side - membrane 1:
CTRL, CTRL + STRESS, DEX, DEX + STRESS, CTRL, CTRL + STRESS, DEX, DEX + STRESS,
CTRL, CTRL + STRESS, DEX, DEX + STRESS, CTRL, CTRL + STRESS, DEX, DEX + STRESS,
CTRL, CTRL + STRESS, DEX, DEX + STRESS.

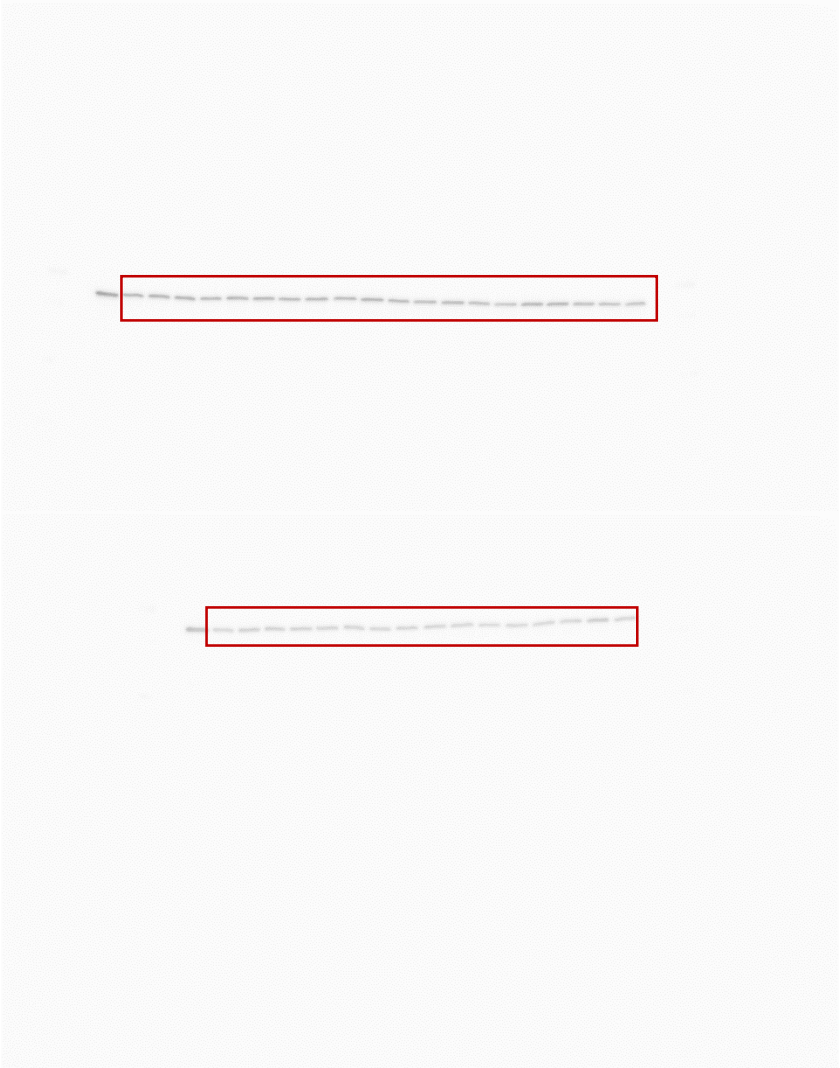
Samples from the left side - membrane 2:
CTRL, CTRL + STRESS, DEX, DEX + STRESS, CTRL, CTRL + STRESS, DEX, DEX + STRESS,
CTRL, CTRL + STRESS, DEX, DEX + STRESS, CTRL, CTRL + STRESS, DEX, DEX + STRESS.

The results of the experiment are shown in Table 1.

β-actin as loading control to UCP-4

Hippocampus

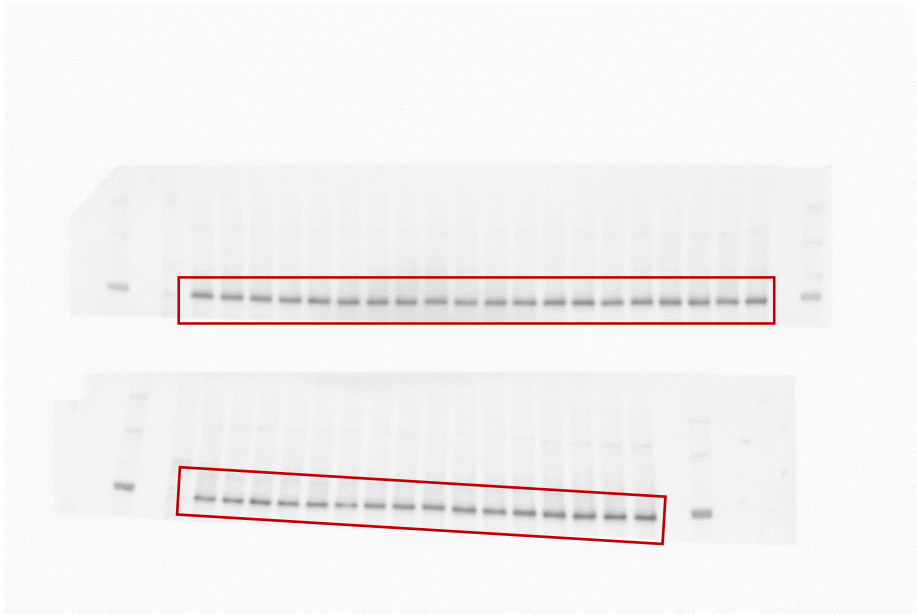
membrane 1 and membrane 2



MFN2

Frontal cortex

membrane 1 and membrane 2



Samples from the left side - membrane 1:

CTRL, CTRL + STRESS, DEX, DEX + STRESS, CTRL, CTRL + STRESS, DEX, DEX + STRESS, CTRL, CTRL + STRESS, DEX, DEX + STRESS, CTRL, CTRL + STRESS, DEX, DEX + STRESS.

Samples from the left side - membrane 2:

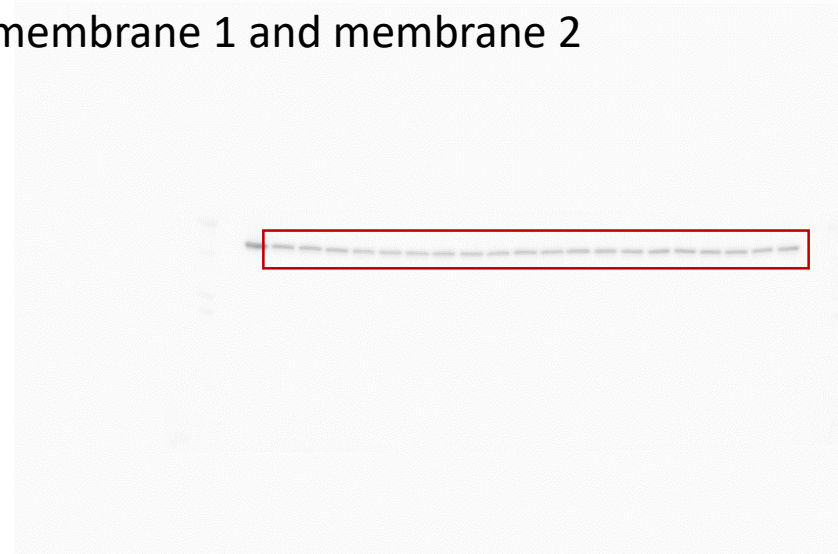
CTRL, CTRL + STRESS, DEX, DEX + STRESS, CTRL, CTRL + STRESS, DEX, DEX + STRESS, CTRL, CTRL + STRESS, DEX, DEX + STRESS, CTRL, CTRL + STRESS, DEX, DEX + STRESS.

The results of the experiment are shown in Table 1.

β -actin as loading control to MFN2

Frontal cortex

membrane 1 and membrane 2



MFN2

Hippocampus

membrane 1 and membrane 2



Samples from the left side - membrane 1:

CTRL, CTRL + STRESS, DEX, DEX + STRESS, CTRL, CTRL + STRESS, DEX, DEX + STRESS, CTRL, CTRL + STRESS, DEX, DEX + STRESS, CTRL, CTRL + STRESS, DEX, DEX + STRESS, CTRL, CTRL + STRESS, DEX, DEX + STRESS.

Samples from the left side - membrane 2:

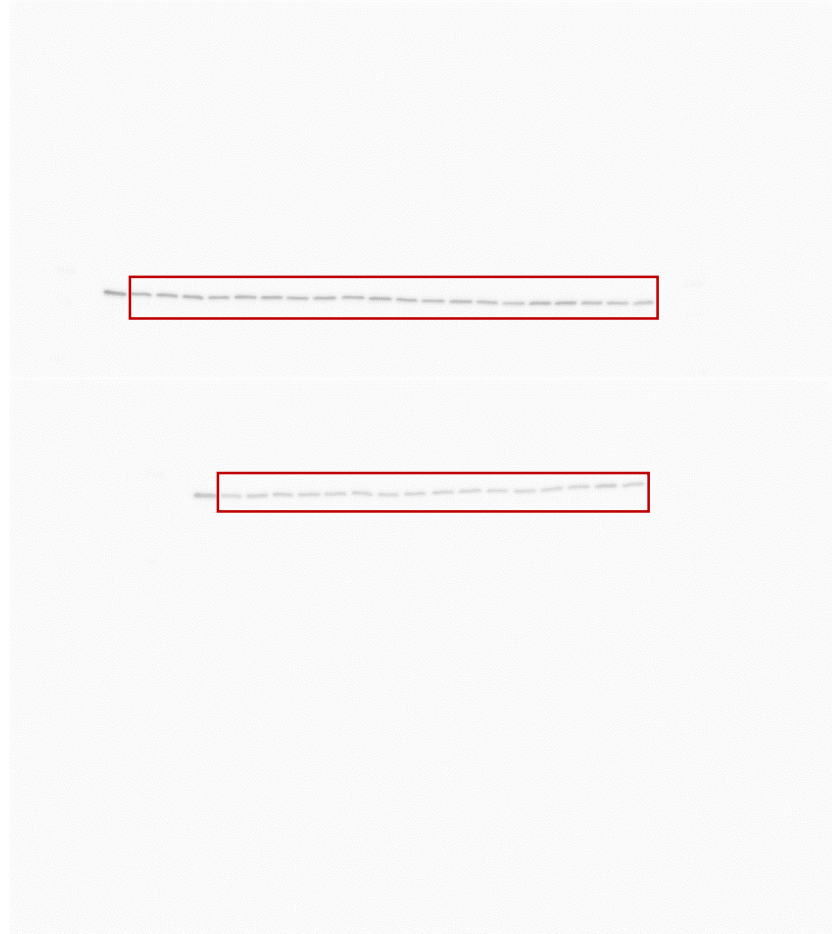
CTRL, CTRL + STRESS, DEX, DEX + STRESS, CTRL, CTRL + STRESS, DEX, DEX + STRESS, CTRL, CTRL + STRESS, DEX, DEX + STRESS, CTRL, CTRL + STRESS, DEX, DEX + STRESS, CTRL, CTRL + STRESS, DEX, DEX + STRESS.

The results of the experiment are shown in Table 1.

β -actin as loading control to MFN2

Hippocampus

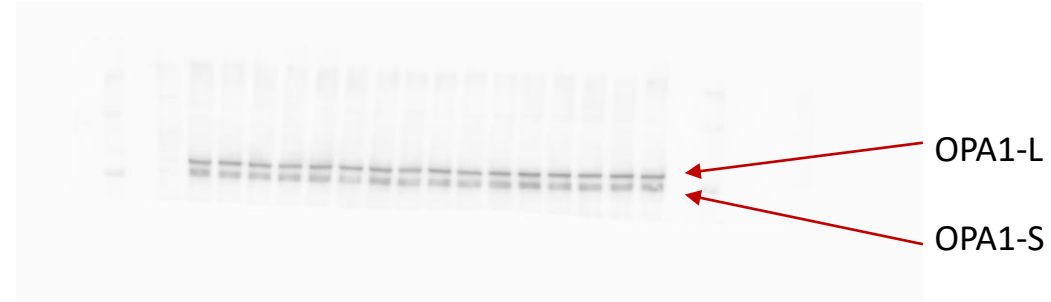
membrane 1 and membrane 2



OPA1

Frontal cortex

membrane 1 and membrane 2



Samples from the left side - membrane 1:

CTRL, CTRL + STRESS, DEX, DEX + STRESS, CTRL, CTRL + STRESS, DEX, DEX + STRESS, CTRL, CTRL + STRESS, DEX, DEX + STRESS, CTRL, CTRL + STRESS, DEX, DEX + STRESS.

Samples from the left side - membrane 2:

CTRL, CTRL + STRESS, DEX, DEX + STRESS, CTRL, CTRL + STRESS, DEX, DEX + STRESS, CTRL, CTRL + STRESS, DEX, DEX + STRESS, CTRL, CTRL + STRESS, DEX, DEX + STRESS.

The results of the experiment are shown in Table 1.

β -actin as loading control to OPA1

Frontal cortex

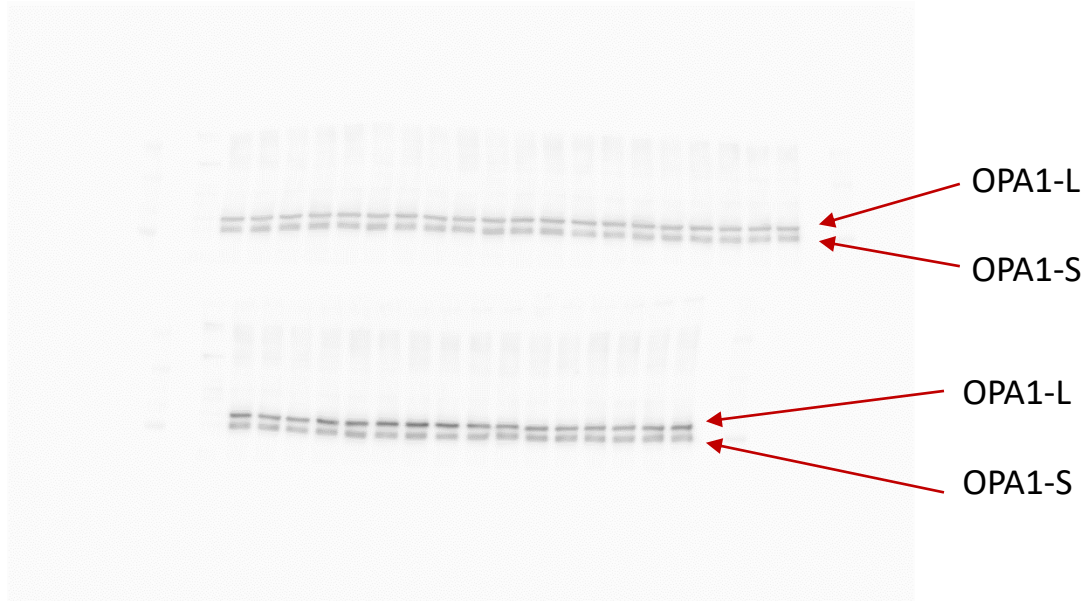
membrane 1 and membrane 2



OPA1

Hippocampus

membrane 1 and membrane 2



Samples from the left side - membrane 1:

CTRL, CTRL + STRESS, DEX, DEX + STRESS, CTRL, CTRL + STRESS, DEX, DEX + STRESS, CTRL, CTRL + STRESS, DEX, DEX + STRESS, CTRL, CTRL + STRESS, DEX, DEX + STRESS.

Samples from the left side - membrane 2:

CTRL, CTRL + STRESS, DEX, DEX + STRESS, CTRL, CTRL + STRESS, DEX, DEX + STRESS, CTRL, CTRL + STRESS, DEX, DEX + STRESS, CTRL, CTRL + STRESS, DEX, DEX + STRESS.

The results of the experiment are shown in Table 1.

β -actin as loading control to OPA1

Hippocampus

membrane 1 and membrane 2

