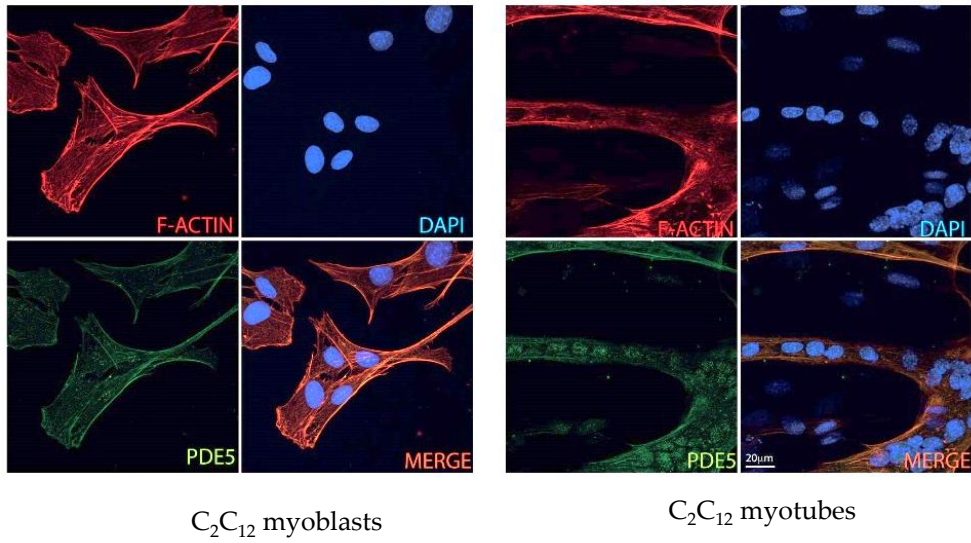


Supplementary Figure S1. Immunofluorescence staining of Pde5a in proliferating (C_2C_{12} myoblasts) and differentiating mouse myogenic cells (C_2C_{12} myotubes). Green: Pde5; red: actin. Nuclei are stained with DAPI (blue).



Supplementary Figure S2.

a) Schematic representation of *Pde5a* gene showing the localization of the two regions cloned and assayed for promoter activity; b) sequences of the regions cloned in luciferase vectors; c) aminoacid sequence of the first 2 exons of *Pde5a* murine variants showing that these isoforms differ in the N-terminal region.

