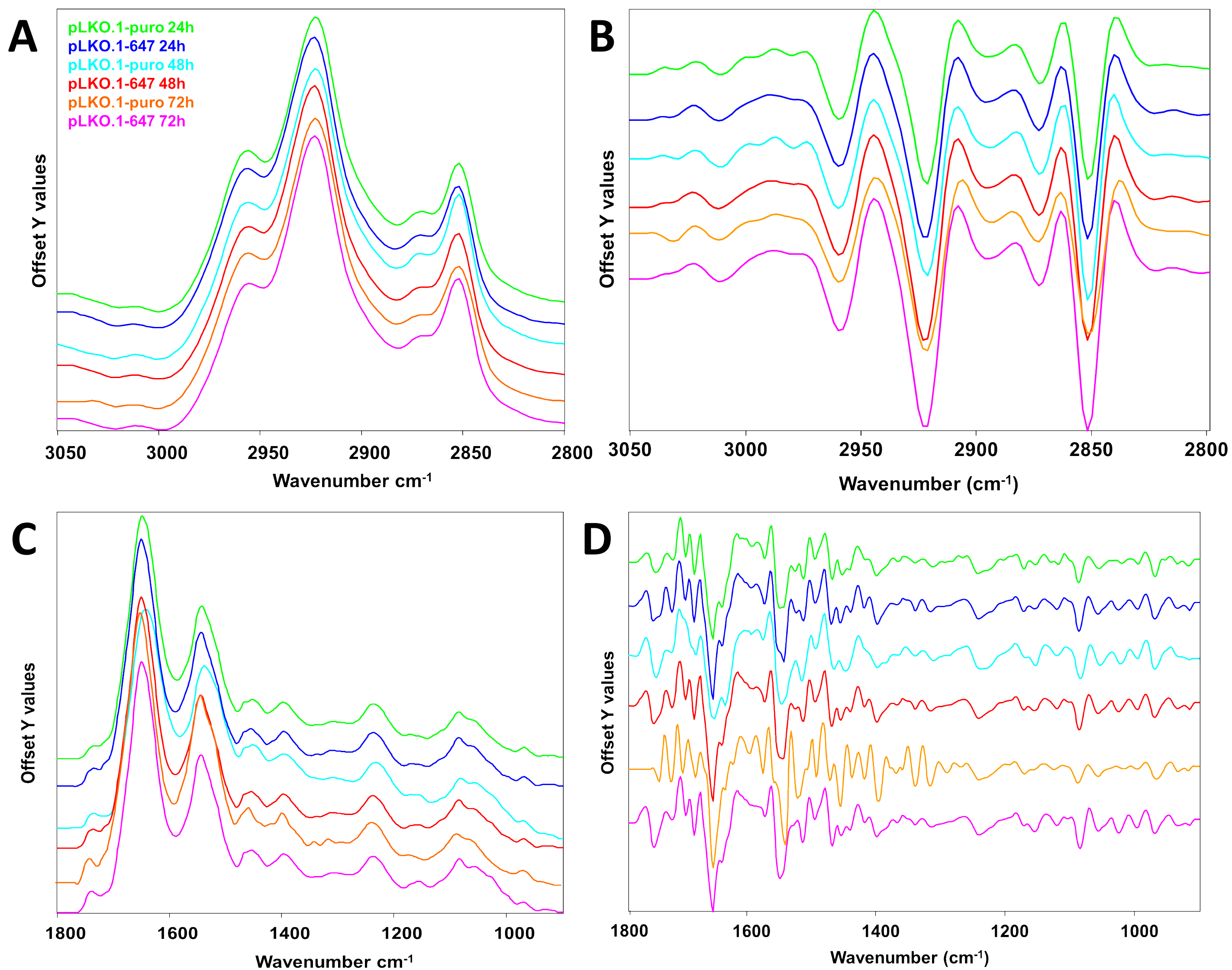


**Figure S1.** HSC3 IR spectra shifted along Y axis for a better comprehension and reported in 3050-2800  $\text{cm}^{-1}$  spectral range in absorbance values **A**), and in second derivative mode **B**); in 1800-900  $\text{cm}^{-1}$  spectral range in absorbance values **C**), and in second derivative mode **D**).



**Figure S2:** HOC621 IR spectra shifted along Y axis for a better comprehension and reported in 3050-2800  $\text{cm}^{-1}$  spectral range in absorbance values **A**), and in second derivative mode **B**); in 1800-900  $\text{cm}^{-1}$  spectral range in absorbance values **C**), and in second derivative mode **D**).