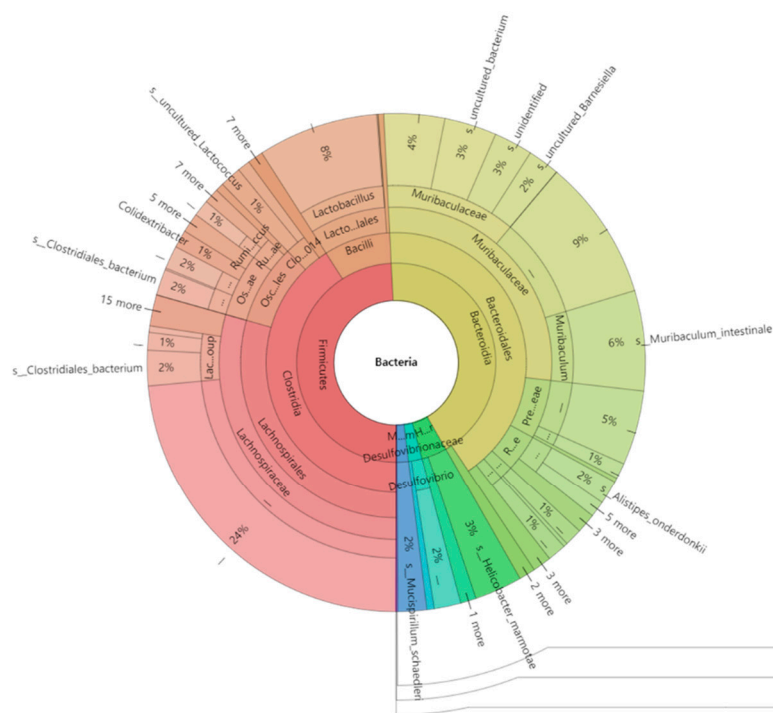


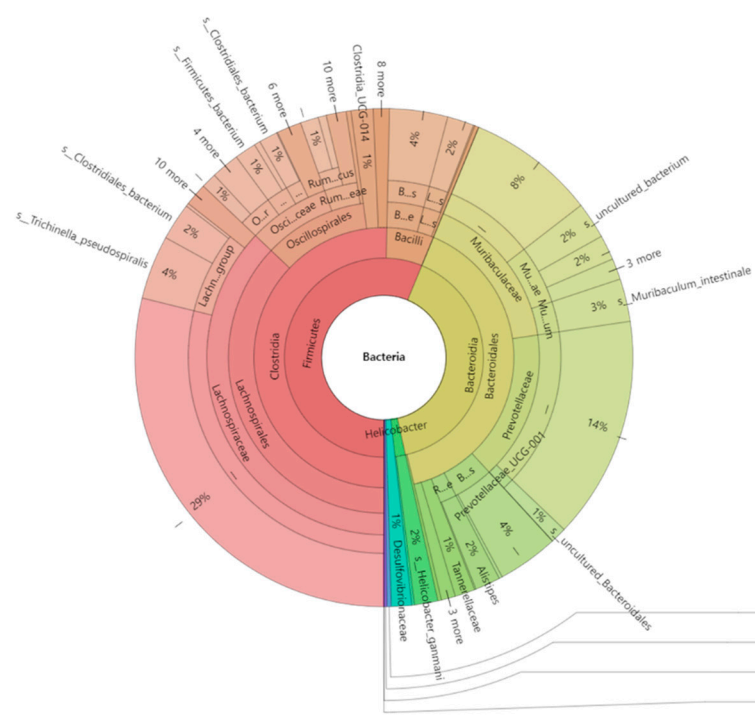
a



b



c



d



e



Supplementary Figure S1. Effects of PRE, PRO, and SYN on gut microbiome composition of DSS-induced colitis mice. Taxonomic breadth of bacteria visualized using Krona plot of CON group (a), DSS group (b), PRE group (c), PRO group (d), and SYN group (e). The results were shown with mean \pm SD ($n = 3$). Data were statistically considered at $p < 0.05$, and different small letters represented a statistical difference.