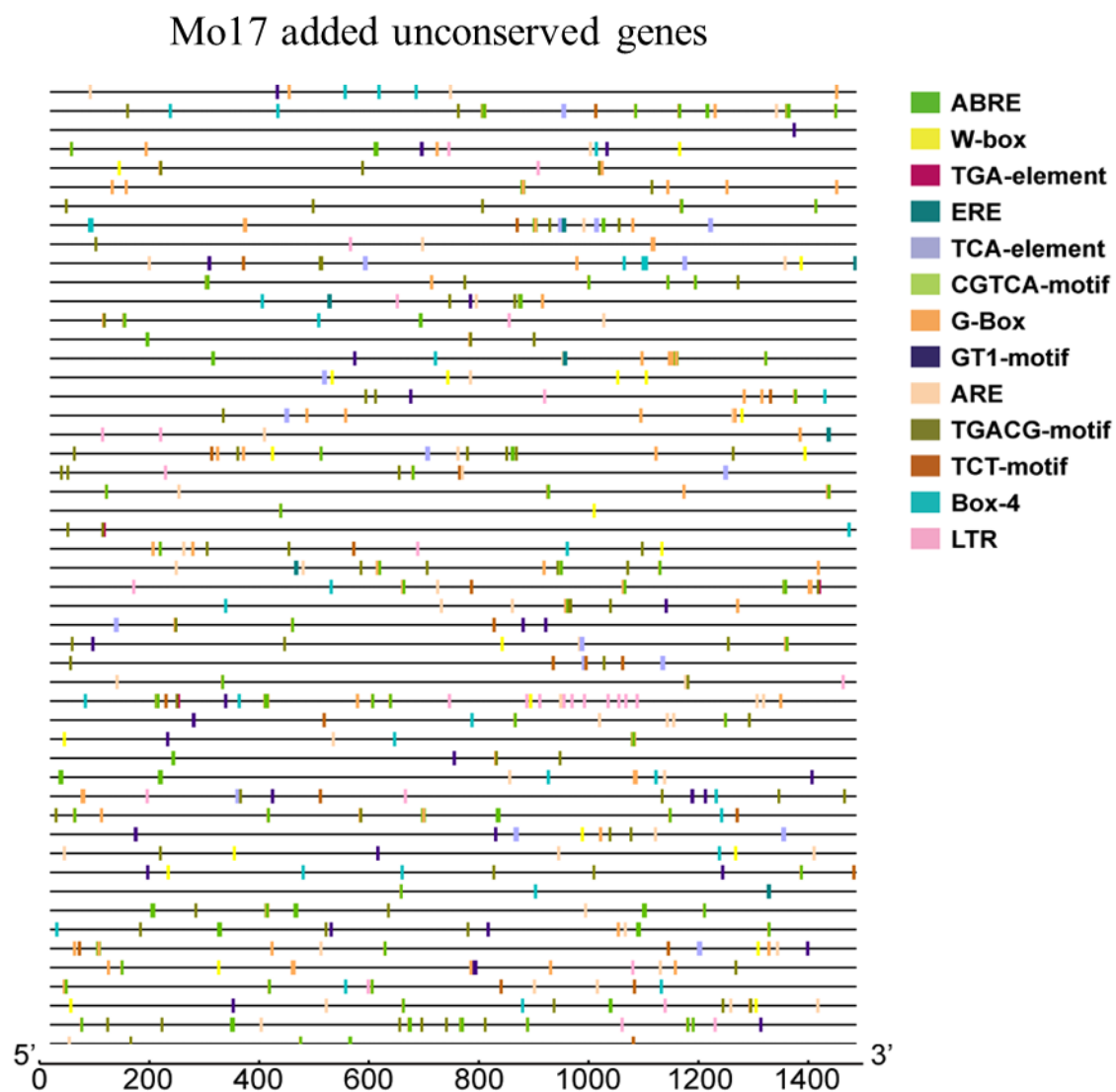
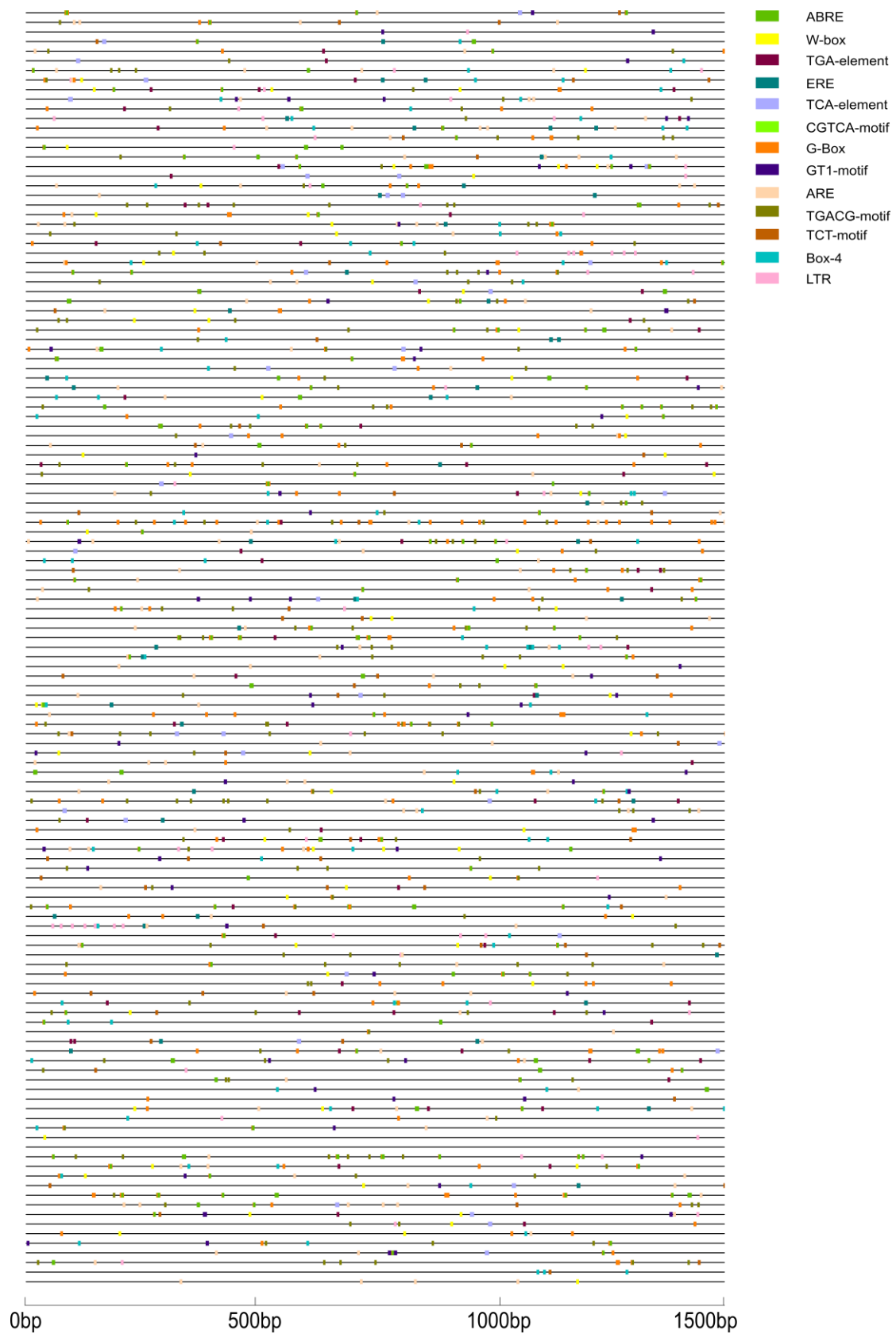


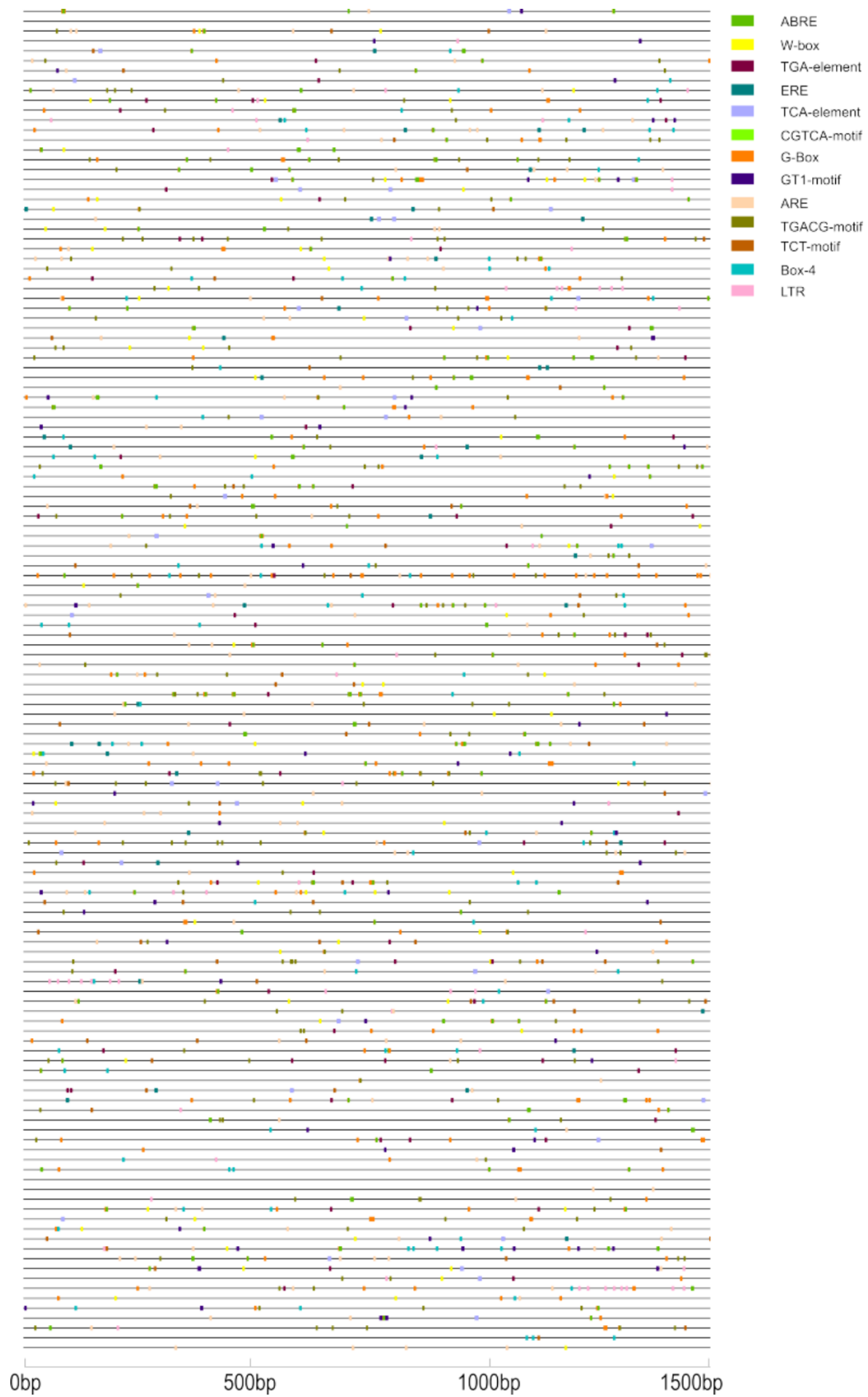
Supplemental Figure S1 The cross progress for BM-C/C-BM and MB-C/C-MB (A) and the correlation among replicates of embryo and endosperm samples from BM-C/C-BM and MB-C/C-MB (B).



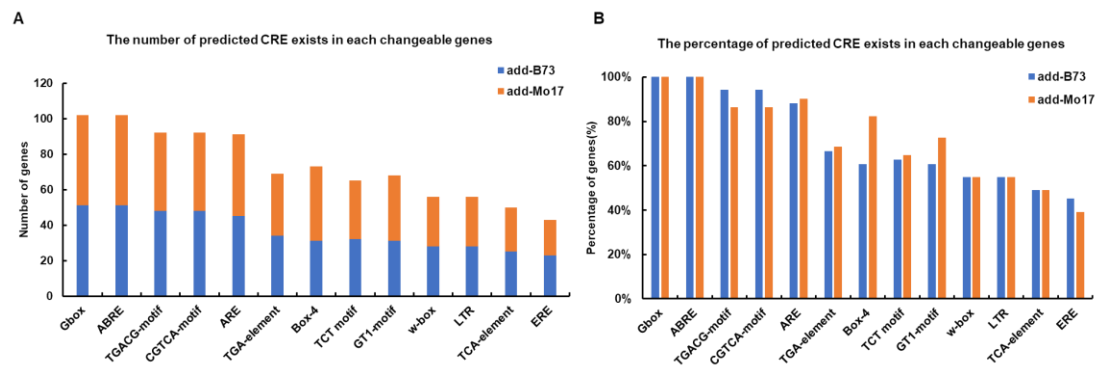
Supplemental Figure S2 The cis-element distribution in the promoter sequence of the 51 non-conserved imprinted genes detected in the Mo17-added group



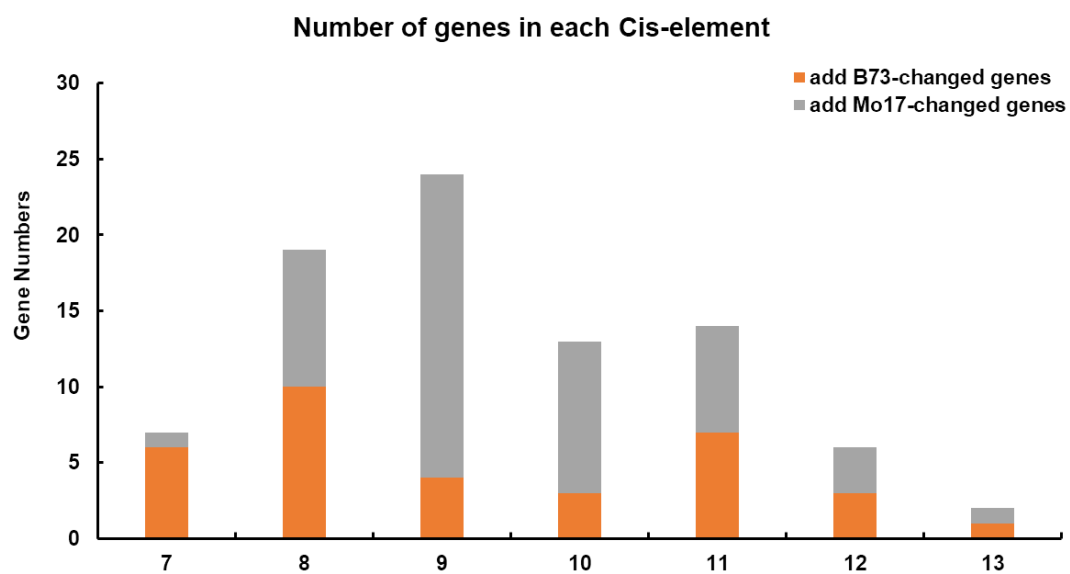
Supplemental Figure S3 The cis-element distribution in the promoter sequence of the conserved imprinted genes detected in the B73-added group



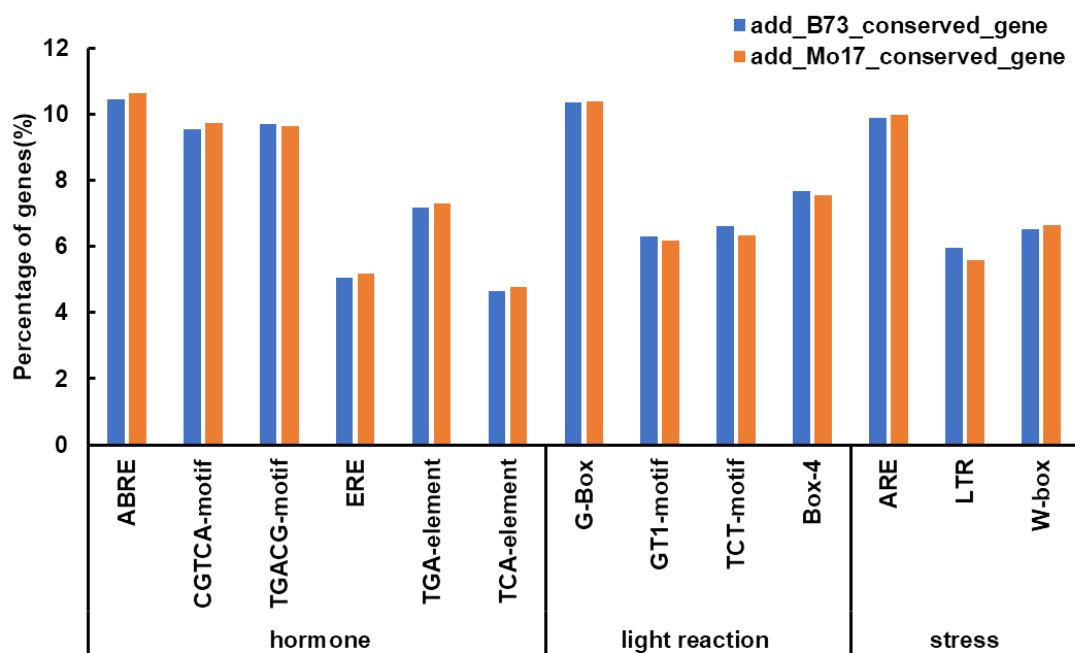
Supplemental Figure S4. The cis-element distribution in the promoter sequence of the conserved imprinted genes detected in the Mo17-added group



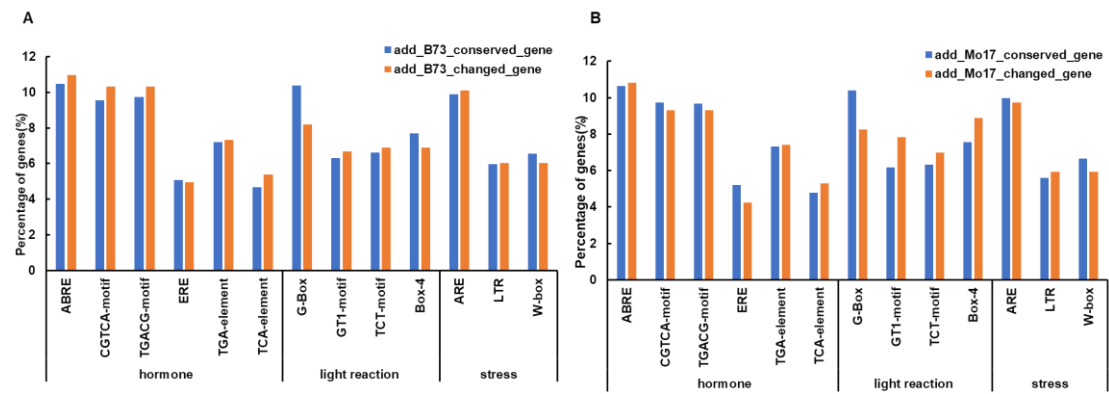
Supplemental Figure S5. Distribution of predicted CREs in each non-conserved gene



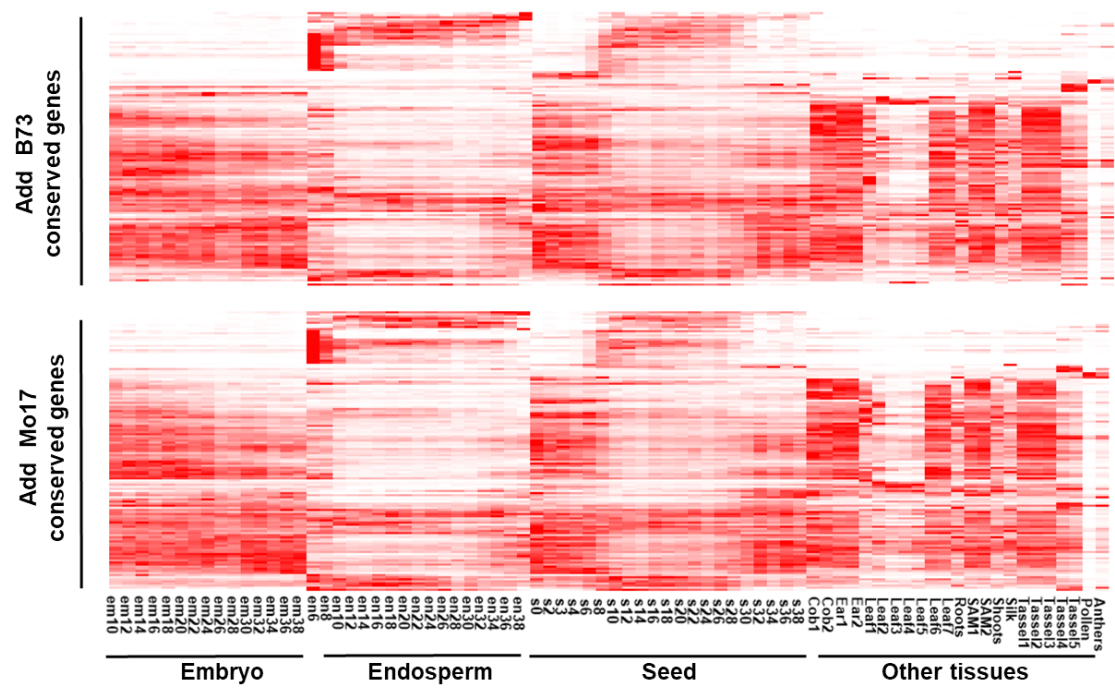
Supplemental Figure S6. The ratio of each Cis-element existed in two groups of non-conserved genes



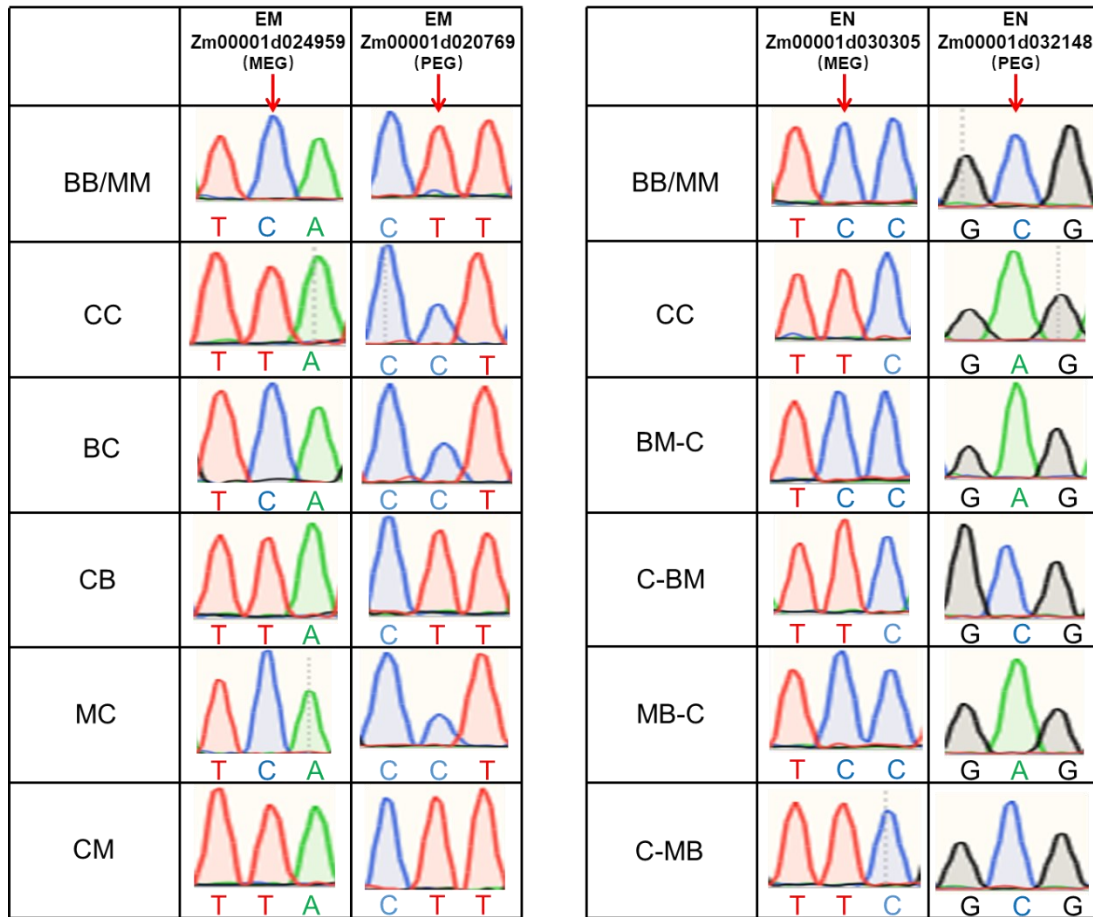
Supplemental Figure S7. The ratio of each Cis-element existed in two groups of conserved genes



Supplemental Figure S8. Ratio comparison of each cis-element in the conserved and non-conserved genes in the B73-added and Mo17-added groups



Supplemental Figure S9. The expression of conserved imprinted genes detected in the B73-added and Mo17-added groups



Supplemental Figure S10. Verification of the imprinted genes by PCR sequencing