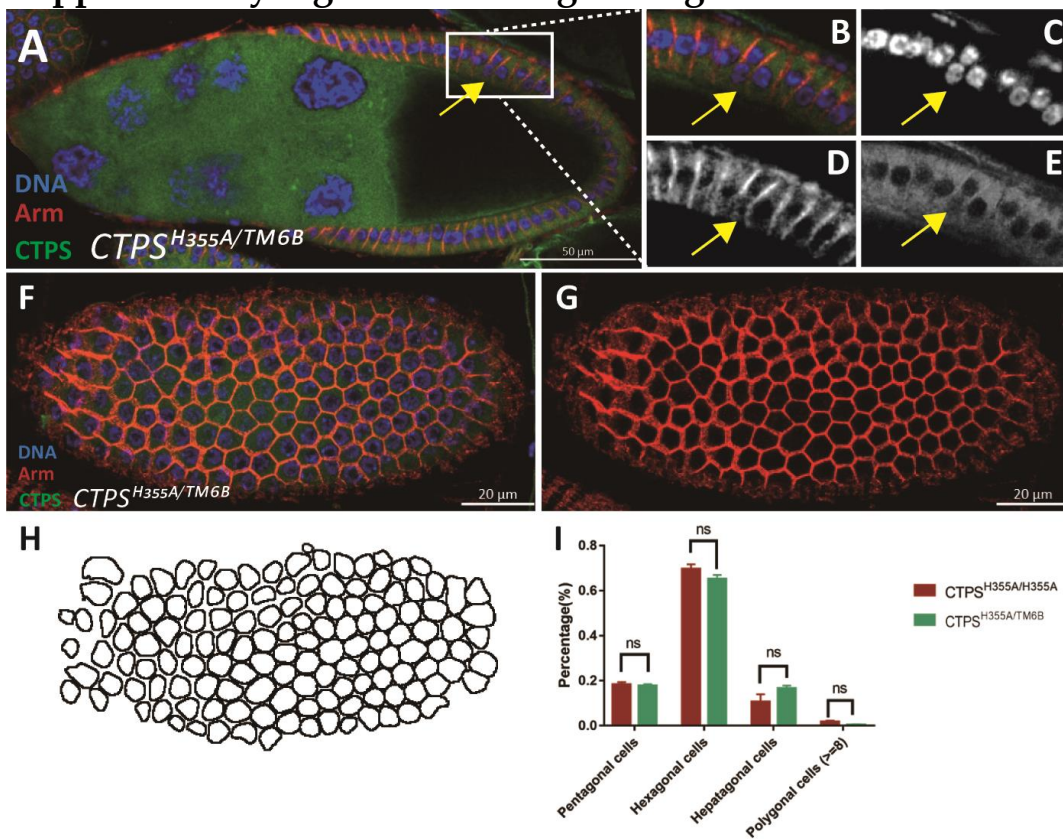


Supplementary Figure S1 and Figure Legends



Supplementary Figure S1. *CTPS^{H355A/TM6B}* mutants have no significant difference from *CTPS^{H355A}* mutant. (A-E) Follicle cell ingress in *CTPS^{H355A/TM6B}* mutants. CTPS is labelled using CTPS antibody and there is no cytoophidia (Green), Armadillo marked cell membrane (Red), DNA is labelled using HOECHST 33342 (Blue). (F-H) Surface view of a stage 8 *CTPS^{H355A/TM6B}* egg chamber. (I) Quantitative analysis of the morphological difference between the *CTPS^{H355A}* and the *CTPS^{H355A/TM6B}* follicle cells (6 egg chambers were quantified at stage 8 per genotype, biological repeats = 3). Mann Whitney U test.