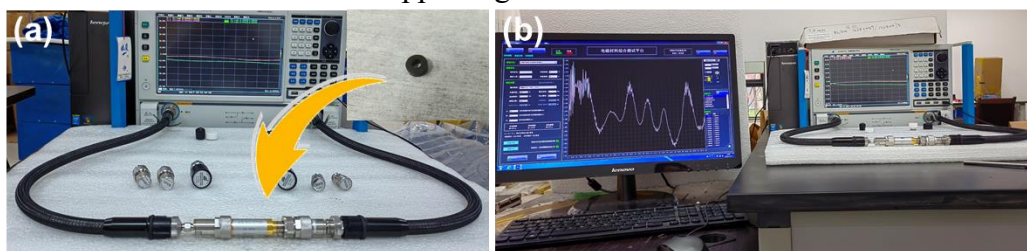
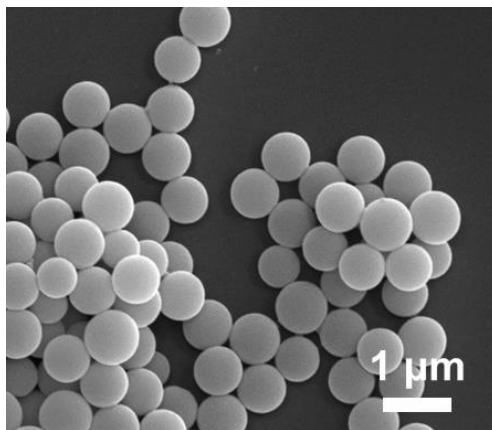


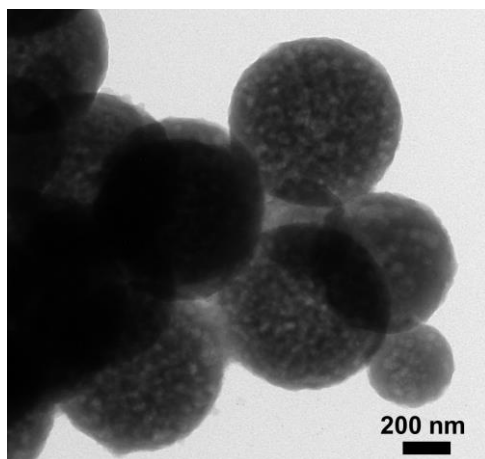
## Supporting Information



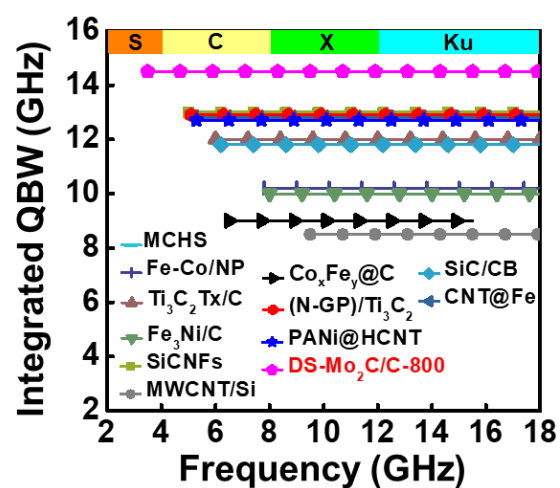
**Figure S1.** The pictures of coaxial calibration kit and sample (a), and measurement procee of Ceyear AV3672C (b).



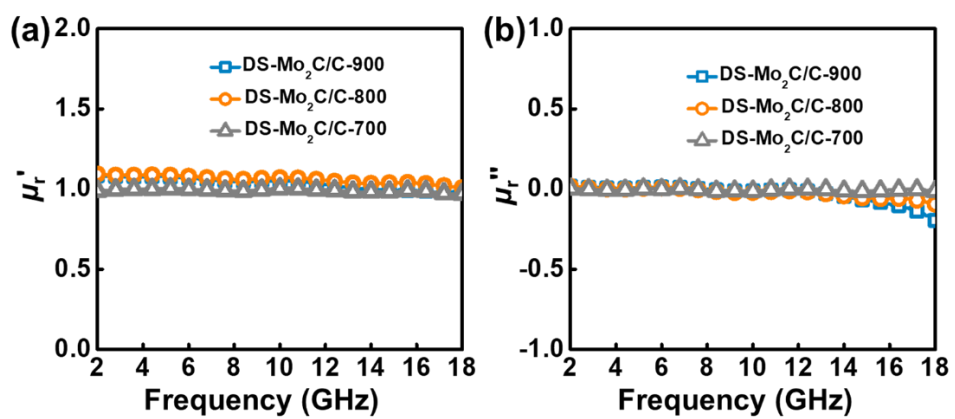
**Figure S2.** SEM image of Mo-GL nanospheres.



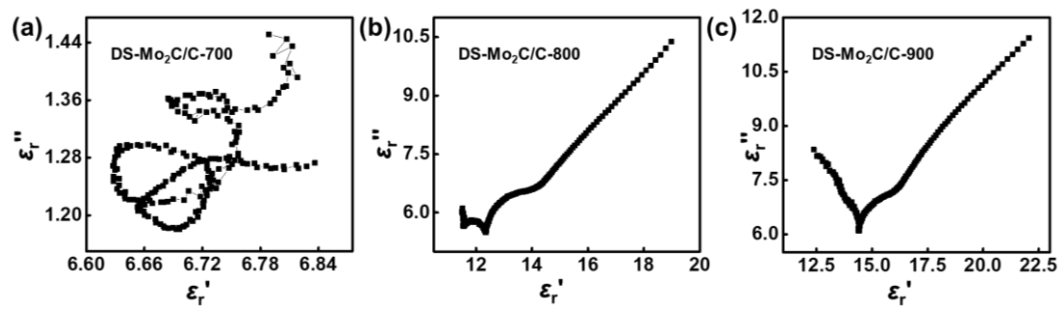
**Figure S3.** TEM image of Mo-PD nanospheres.



**Figure S4.** The integrated QBW at the range of 2.0-18.0 GHz of DS- $\text{Mo}_2\text{C/C-800}$  and other carbon-based EM absorption materials.



**Figure S5.** Real parts (a) and imaginary parts (b) of the complex permeability of DS-Mo<sub>2</sub>C/C-700, DS-Mo<sub>2</sub>C/C-800, and DS-Mo<sub>2</sub>C/C-900.



**Figure S6.** The Cole-Cole semicircle of DS-Mo<sub>2</sub>C/C-700 (a), DS-Mo<sub>2</sub>C/C-800 (b), and DS-Mo<sub>2</sub>C/C-900 (c).