

### Supplementary Information

Figure S1. Calibration curve of Hispolon standard solutions ranging from (2  $\mu\text{g/ml}$ -100  $\mu\text{g/ml}$ ).

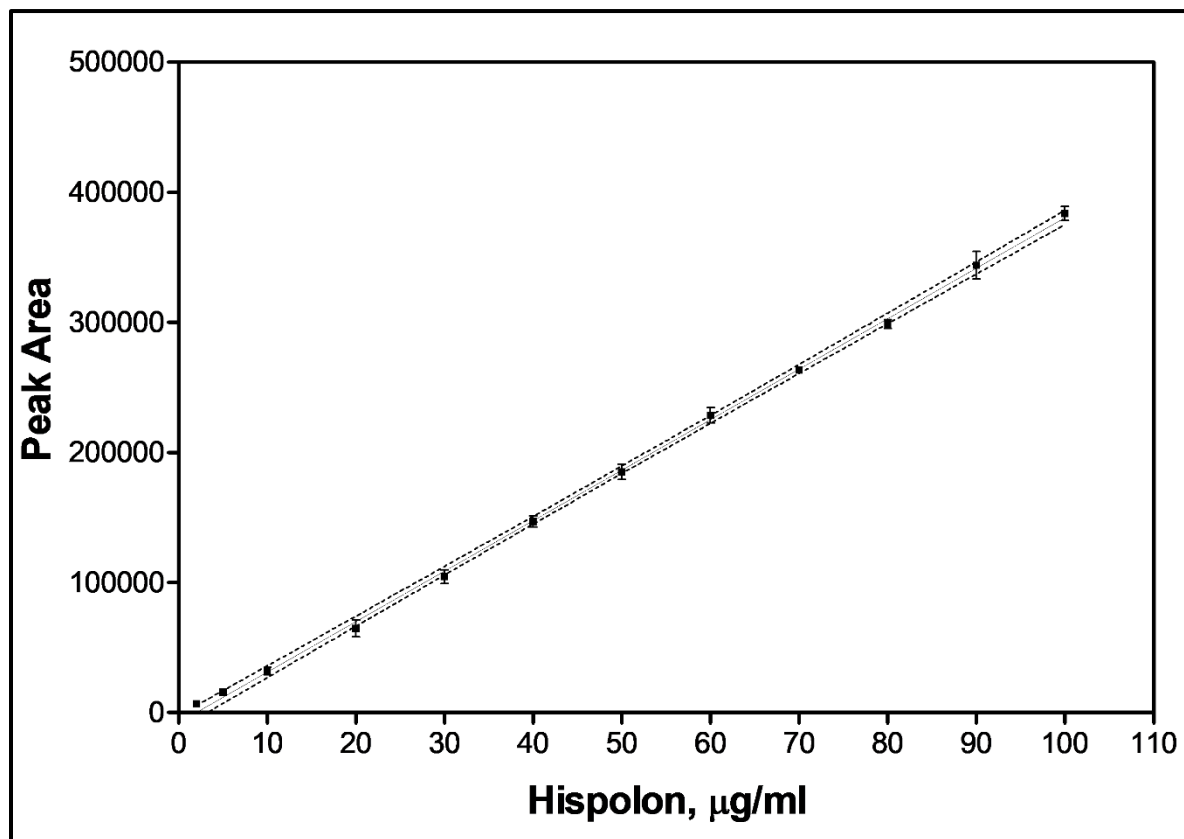


Figure S2. Representative Chromatogram of a Hispolone Standard Solution(100  $\mu\text{g/ml}$ ).

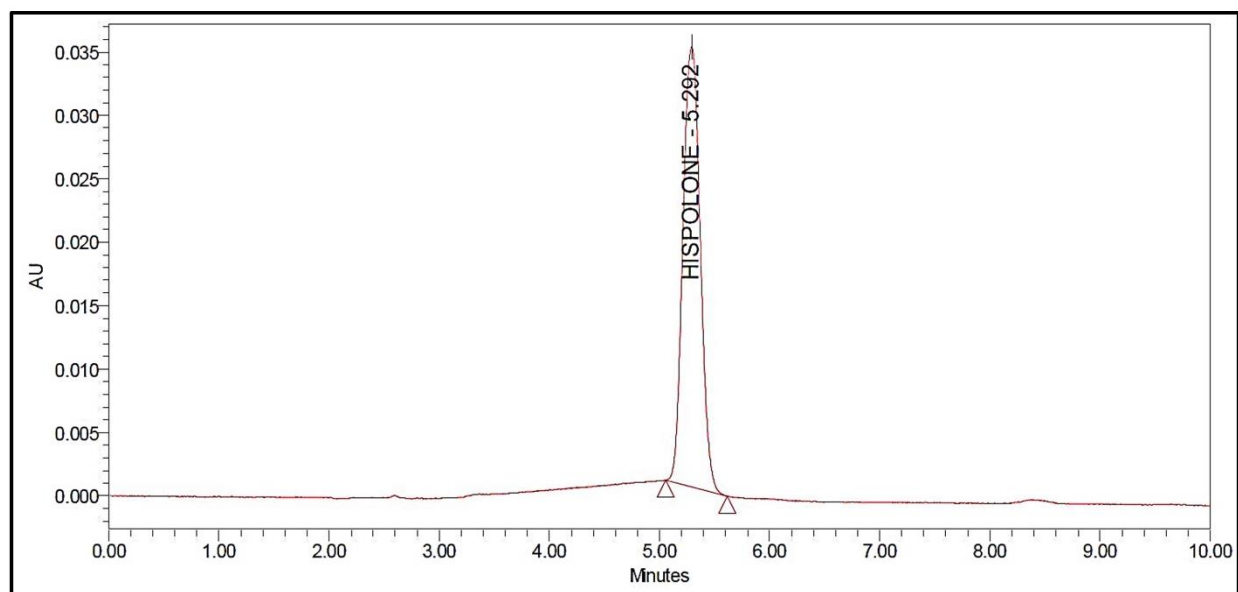


Figure S3. Job's continuous variation plot of Hispolon-SBE $\beta$ CD (HSC) complex. Data represented as mean  $\pm$  SEM (n=3).

