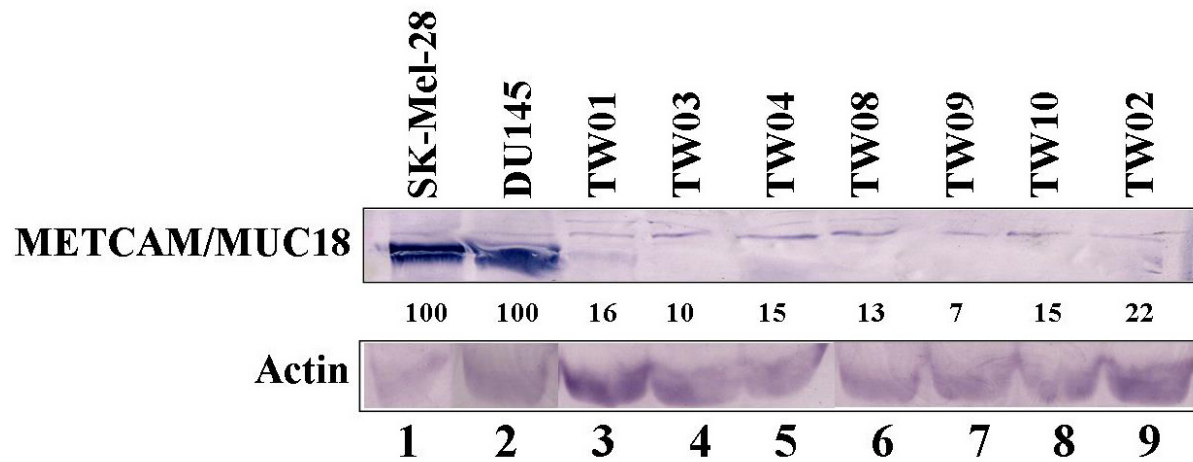


Supplementary materials:



**Figure S1.** Expression of huMETCAM/MUC18 in seven NPC-TW cell lines. Cultivation of all seven NPC cell lines and WB analysis were carried out as described in “Materials and methods.” NPC-TW01, TW02, TW08 and TW10 were established from NPC type I and NPC-TW03, TW04, and TW09 were established from NPC type III [37,38]. The number below each lane was relative expression level of huMETCAM/MUC18 in comparison to that of SK-Mel-28 (assumed as 100%). Actin was the loading control for each lane.