

Supplementary Material

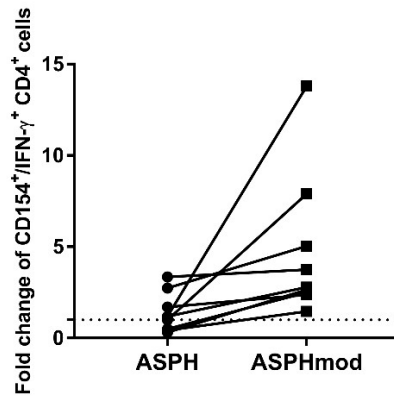


Figure S1. ASPHmod-pulsed moDCs induce an increase in CD4⁺CD154⁺IFN- γ ⁺ T cells. Relative T cell response of eight individuals to ASPH- versus ASPHmod-pulsed moDCs

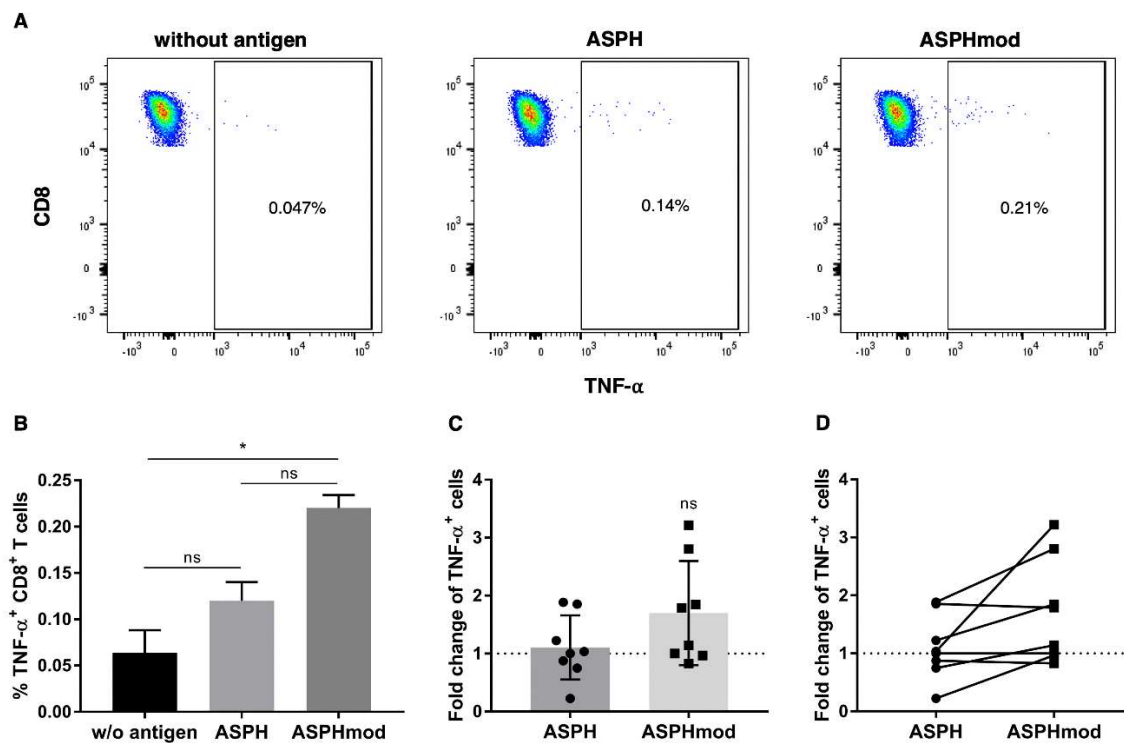


Figure S2. ASPHmod-pulsed moDCs stimulate an increased number of CD8⁺TNF- α ⁺ T cells. (A) Representative flow cytometric analysis of the T cells derived from a single individual after restimulation with non-pulsed, ASPH- or ASPHmod-pulsed moDCs. (B) Data represent the means \pm SD of the same individual assessed in triplicates: not significant (ns), *significantly different, $P < 0.05$ (Kruskal-Wallis test). (C) Fold change in CD8⁺TNF- α ⁺ T cells relative to cells restimulated with the non-pulsed moDC control. Data

represent the means \pm SD of eight individuals: not significant (ns). (D) Relative T cell responses of each individual to ASPH- versus ASPHmod-pulsed moDCs.

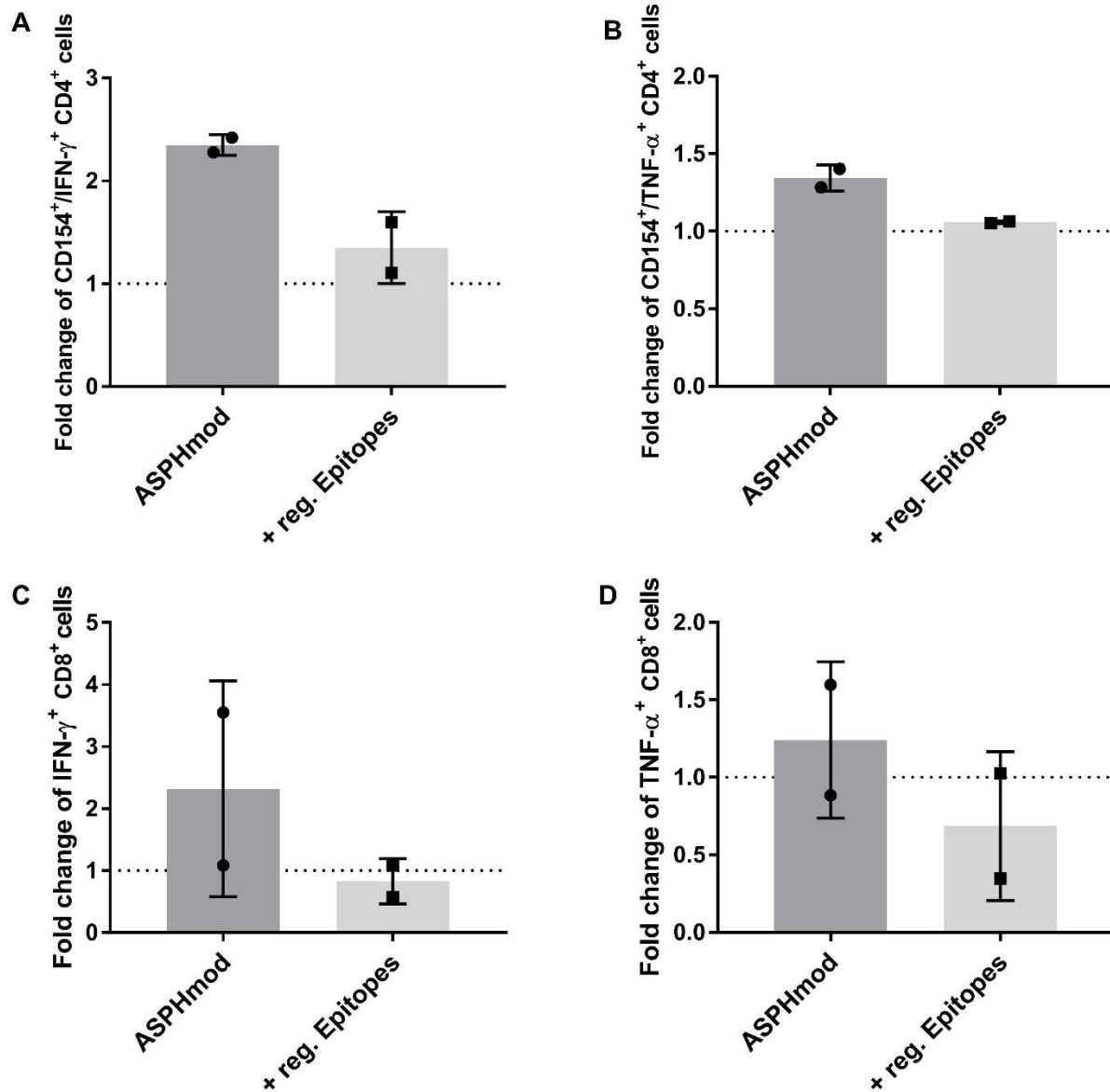


Figure S3. Adding wild type, regulatory epitopes abrogates the increased immunogenicity of ASPHmod. Fold change in (A) CD4⁺CD154⁺IFN- γ ⁺ T cells, (B) CD4⁺CD154⁺TNF- α ⁺ T cells, (C) CD8⁺IFN- γ ⁺ T cells and (D) CD8⁺TNF- α ⁺ T cells relative to cells restimulated with the non-pulsed moDC control. Data represent the means \pm SD of two individuals.

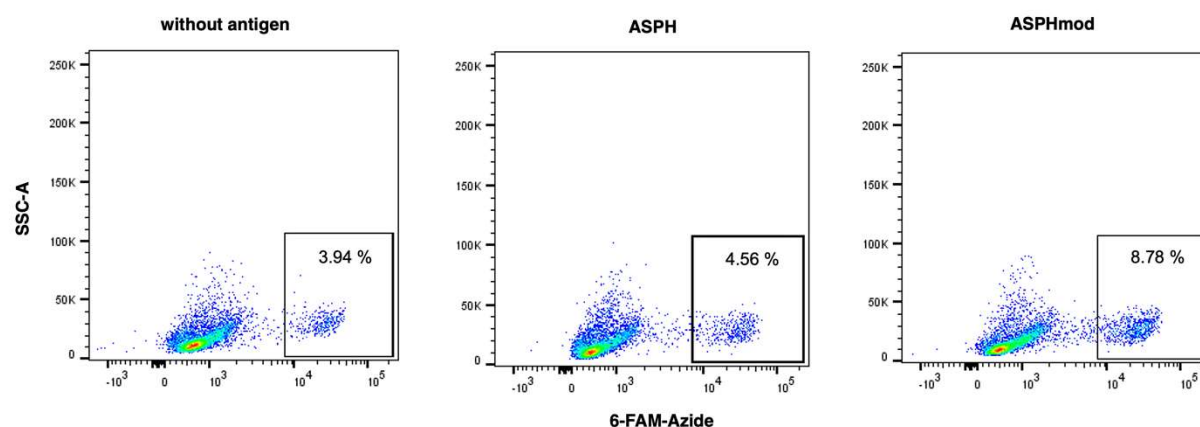


Figure S4. Analysis of T cell proliferation after coculture with non-pulsed, ASPH- and ASPHmod-pulsed moDCs. Representative flow cytometric analysis of T cell proliferation derived from a single individual.